



# Hammer Museum Spring 2015

10899 Wilshire Boulevard Los Angeles, California 90024 USA

[www.hammer.ucla.edu](http://www.hammer.ucla.edu)  Hammer Museum  hammer\_museum

Non Profit Org.  
US Postage  
**PAID**  
Los Angeles, CA  
Permit no. 202

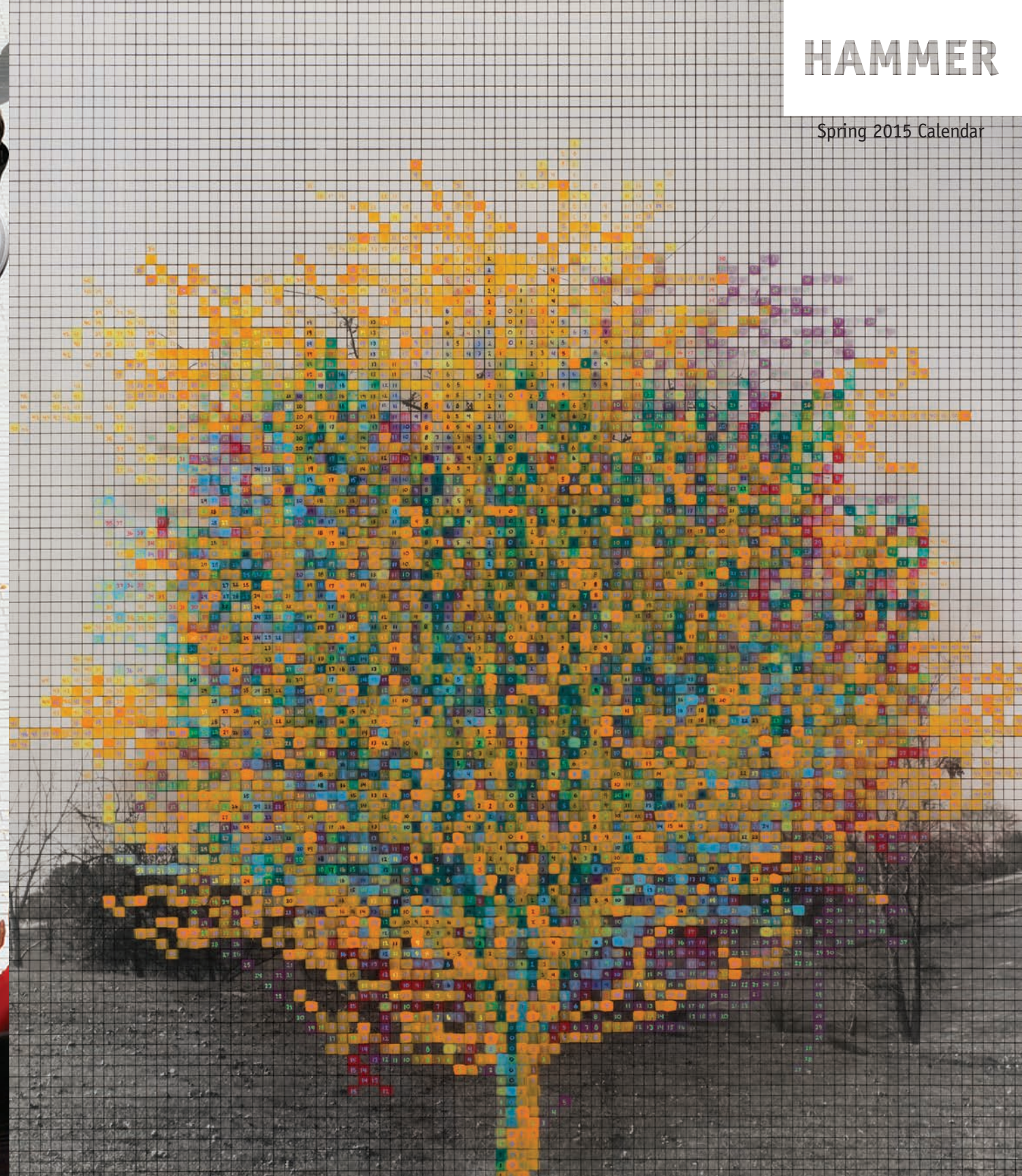


# HAMMER

Spring 2015 Calendar



FRONT COVER: CHARLES GAINES. *NUMBERS AND TREES V, LANDSCAPE #8: ORANGE CROW*, 1989. ACRYLIC SHEET, ACRYLIC PAINT, WATERCOLOR, PHOTOGRAPH. 46 7/8 X 38 3/4 IN. (118.43 X 98.11 CM). COLLECTION OF BRUCE BOWER; IMAGE COURTESY OF SUSANNE VIELMETTER LOS ANGELES PROJECTS. PHOTO BY ROBERT WEDEMEYER.  
BACK COVER: HEATHERWICK STUDIO. *SPUN CHAIR*, 2007-2011. COURTESY OF HEATHERWICK STUDIO. PHOTO BY SUSAN SMART.





# A MESSAGE FROM THE DIRECTOR

The beginning of 2015 brings a truly rich and surprising mix of exhibitions here at the Hammer. *Apparitions: Frottages and Rubbings from 1860 to Now*, a splendid exhibition organized by former Grunwald Center curator Allegra Pesenti, exemplifies what the Hammer does best—gathering artists both known and unknown and spanning two centuries to illuminate a practice that has been widely used but rarely noted. There are so many revelations and discoveries in this beautiful exhibition.

The work of Charles Gaines, a Los Angeles-based conceptual artist and influential educator, has been included in several Hammer Museum exhibitions over the last decade. As a mentor to so many L.A. artists, and as a faculty member at CalArts, Charles embodies the generosity of spirit that is crucial to the Los Angeles arts community. He is also an important member of our Hammer family, whether he is serving on our Artist Council, participating in K.A.M.P., or lecturing to UCLA students. So it is especially gratifying to host an exhibition of his early work, *Charles Gaines: Gridwork 1974–1989*, which was organized by Hammer alum Naima J. Keith, now a curator at The Studio Museum in Harlem. Additionally, a body of Charles’s recent work will inaugurate the art gallery at Art + Practice and launch the Hammer’s Public Engagement partnership at this new art and social services nonprofit in Leimert Park founded by Mark Bradford, Eileen Harris Norton, and Allan DiCastro. Please see page 7 in this calendar to read more about this ambitious new endeavor.

Thomas Heatherwick’s internationally acclaimed and award-winning designs are on view at the Hammer through May—an exhibition organized by another Hammer alum, Brooke Hodge. The exhibition illustrates Heatherwick’s unique creative process as he arrives at his masterful designs through the lens of a singular question—for example “Can a rotationally symmetrical form make a comfortable chair?” or “How can a building represent a nation?” His answers/solutions are wildly imaginative and delightfully innovative.

On the topic of design, we are very excited by the new architectural feature you will find spanning our courtyard. Named for the former chairman of the Hammer Board of Directors, John V. Tunney, the bridge was designed by Michael Maltzan Architecture and will connect our east and west galleries. Incorporating great design to create a seamless visitor pathway through the museum, the bridge is the perfect way to honor John and his master role as connector and mediator in the history of our museum.

Finally, it has been a full year since we eliminated admission fees, and we would love to hear more about what that means to our visitors—and any questions, comments, or ideas you’d like to throw into the mix. Please feel free to email us at [feedback@hammer.ucla.edu](mailto:feedback@hammer.ucla.edu)

Ann Philbin, Director



ABOVE: JOHN V. TUNNEY BRIDGE, HAMMER COURTYARD. RENDERING BY MICHAEL MALTZAN ARCHITECTURE. RIGHT: ANN PHILBIN (PHOTO: CATHERINE OPIE)



# HAMMER NEWS

## END-OF-YEAR ACQUISITIONS

Every year generous donations and purchases of artwork bolster the Hammer’s collections. This year the museum purchased important works such as **Jeremy Deller’s** *English Magic* (2013), on view at the Hammer from March 14 through June 7, 2015. We also received gifts from numerous friends. Peter Norton gave twenty-eight works by artists including **Mike Kelley**, **Tim Hawkinson**, and **Jim Shaw**. Gail and Stanley Hollander donated seventeen works by artists such as **Doug Aitken**, **Elliott Hundley**, and **Nathan Mabry**. Carlo Bronzini Vender donated nine works by artists such as **Gedi Sibony** and **Kaari Upson**, and David Hoberman gave six pieces by **Paul McCarthy**, **Kristin Morgan**, and others. Walead Beshty and Candace Younger donated artworks in memory of Karin Higa, joining others including Julie Ault, Barbara Kruger, Lari Pittman, Catherine Opie, and Shaun Caley Regen. Other donations included pieces by **Karl Haendel** and **Mark Handforth** from Rebecca and Martin Eisenberg; two

works by **Richard Hawkins** from Kourosh Larizadeh and Luis Pardo; an **Evan Holloway** sculpture from Anne and Robert Conn; and a **Jeffrey Vallance** sculpture from Rosamund Felsen.

Notable recent additions to the Grunwald Center collection of works on paper include an exceptional selection of rubbings by **Jimmie Durham**, **Henri Michaux**, and **Heidi Bucher**; a rare first-edition book by **René Crevel** illustrated by **Max Ernst**; and new Jacob Samuel editions by **Christopher Wool** and **Shio Kusaka**. The Grunwald also received remarkable gifts from generous donors in 2014, including a **Hannah Wilke** silkscreen from Margo Leavin and a selection of works from the Frederick Hammersley Foundation.

JEREMY DELLER. STILL FROM *ENGLISH MAGIC*, 2013. BLU-RAY VIDEO, COLOR, SOUND. 14:32 MIN. HAMMER MUSEUM, LOS ANGELES. PURCHASE. IMAGE COURTESY THE ARTIST AND GAVIN BROWN’S ENTERPRISE. © JEREMY DELLER.





## PROVOCATIONS: THE ARCHITECTURE AND DESIGN OF HEATHERWICK STUDIO

CONTINUES THROUGH MAY 24, 2015

The british designer Thomas Heatherwick has been hailed as a genius for the uniquely inventive nature of his work. Trained at London's Royal College of Art, Heatherwick has designed projects ranging in scale from small to monumental, from consumer products to public sculpture to architecture.

This exhibition, organized by the Nasher Sculpture Center, Dallas, and guest-curated by Brooke Hodge, is the first in North America to present the work of Heatherwick and his studio. *Provocations: The Architecture and Design of Heatherwick Studio* examines the breadth of the studio's practice by focusing on the design concepts behind products such as the handbag designed for Longchamp and the rotation-molded Spun chairs, as well as public and private architectural projects in the United Kingdom, United States, Abu Dhabi, South Africa, Singapore, and China. These include the UK Pavilion, the Seed Cathedral, at the 2010 World Expo; a new distillery for Bombay Sapphire gin; a Learning Hub for Nanyang Technological University; and a contemporary art museum created within a historic grain silo, among many other projects. Heatherwick Studio is recognized for its inventive approach to design, often combining novel engineering, new materials, and innovative technology to create unusual building forms.

Organized by the Nasher Sculpture Center, Dallas, *Provocations* is curated by Brooke Hodge, deputy director of Cooper Hewitt, Smithsonian Design Museum. The Hammer's presentation is overseen by curator Aram Moshayedi.

The Hammer Museum's presentation is made possible in partnership with Burberry. Additional support is provided by The Brotman Foundation of California, Lewis Baskerville, Ronnie Sassoon, and Helen and Sam Zell. Media sponsorship is provided by KCRW 89.9FM. Special thanks to Herman Miller and Bombay Sapphire Gin.

BURBERRY

RELATED PROGRAM

ARTIST TALK

THOMAS HEATHERWICK

THURSDAY, APRIL 30, 7:30PM

HEATHERWICK STUDIO, UK PAVILION, SHANGHAI WORLD EXPO, 2007-2010.  
COURTESY OF HEATHERWICK STUDIO. PHOTO: IWAN BAAN.



# CHARLES GAINES: GRIDWORK 1974–1989

CONTINUES THROUGH MAY 24, 2015

Highly regarded as both a leading practitioner of conceptualism and an influential educator at the California Institute of the Arts, the Los Angeles–based Charles Gaines is celebrated for his photographs, drawings, and works on paper that investigate how rules-based procedures construct order and meaning. Working serially in progressive and densely layered bodies of work, Gaines explores the interplay between objectivity and interpretation, the systematic and the poetic. His groundbreaking work of this period serves as a critical bridge between the first-generation conceptualists of the 1960s and 1970s and those artists of later generations exploring the limits of subjectivity and language. *Gridwork 1974–1989* is the first museum survey of the early years of a career that now spans four decades. It features more than eighty works from eleven different series, including rare and never-before-seen pieces, some of which were presumed lost.

*Charles Gaines: Gridwork 1974–1989* is organized by The Studio Museum in Harlem and curated by Naima J. Keith, associate curator. The Hammer’s presentation is organized by Anne Ellegood, senior curator, and Jamillah James, assistant curator.

The organization of *Charles Gaines: Gridwork 1974–1989* is made possible by a grant from The Andy Warhol Foundation for the Visual Arts. The Hammer Museum’s presentation is generously supported by Heidi and Erik Murkoff.

ABOVE: CHARLES GAINES. *NUMBERS AND TREES VI*, *LANDSCAPE #5*, 1989 (DETAIL). ACRYLIC SHEET, ACRYLIC PAINT, WATERCOLOR, SILKSCREEN, PHOTOGRAPH. 46 ¾ x 38 ¾ IN. (118.4 x 98.1 CM). COLLECTION OF GAIL AND IRVING WEINTRAUB; IMAGE COURTESY OF THE ARTIST AND SUSANNE VIELMETTER LOS ANGELES PROJECTS. PHOTO BY ROBERT WEDEMAYER.

## EXHIBITION TOUR

SUNDAY, MARCH 1, 2PM & 2:45PM

Anne Ellegood, senior curator, and Jamillah James, assistant curator, lead two walk-throughs of the exhibition with Naima J. Keith, associate curator, the Studio Museum in Harlem.

## ARTIST TALK

SAM DURANT & CHARLES GAINES

THURSDAY, APRIL 2, 7:30PM

Having taught since the 1970s, Charles Gaines has mentored and influenced generations of artists living and working in Los Angeles and elsewhere. Sam Durant, a former student of Gaines and a current colleague at CalArts, joins in a conversation reflecting on Gaines’s career as an artist and educator.

## HAMMER PANEL

A HISTORY OF REFUSAL:  
BLACK ARTISTS AND CONCEPTUALISM

WEDNESDAY, MAY 20, 7:30PM

Curator Hamza Walker and the artists Lorraine O’Grady and Rodney McMillian explore the legacies of African American conceptual artists, including Charles Gaines, who investigate identity, representation, and American culture. Panelists discuss past exhibitions that have examined black conceptual practices and questioned what constitutes a “black aesthetic.” Moderated by Thelma Golden, director and chief curator, the Studio Museum in Harlem.

# ART + PRACTICE

4339 LEIMERT BLVD., LOS ANGELES, 90008

Art + Practice Foundation (A+P) is a new art and social service organization in Leimert Park, created by the artist Mark Bradford, the philanthropist and collector Eileen Harris Norton, and the social activist Allan DiCastro. The Hammer, with support from The James Irvine Foundation, is developing a model for collaborative, off-site arts programming with A+P.

Through fall 2016, the museum will organize exhibitions and programs at the A+P campus through its first Public Engagement partnership.

[artandpractice.org](http://artandpractice.org) | [info@artandpractice.org](mailto:info@artandpractice.org)

## EXHIBITION

CHARLES GAINES: LIBRETTOS:  
MANUEL DE FALLA/STOKELY CARMICHAEL  
FEBRUARY 28 – MAY 31, 2015

Employing a systems-based conceptualism that Gaines has long embraced, this new 16-part body of work brings together the early 20th-century opera *La Vida Breve* by the Spanish composer Manuel de Falla and a fiery 1967 speech by the civil rights activist and Black Panther Party member Stokely Carmichael.

*Charles Gaines: Librettos: Manuel de Falla / Stokely Carmichael* is organized by Anne Ellegood, senior curator, and Jamillah James, assistant curator.

Presented in conjunction with *Charles Gaines: Gridwork 1974–1989* at the Hammer Museum.

The Hammer Museum at Art + Practice is a Public Engagement Partnership supported by a grant from The James Irvine Foundation.

## PROGRAMS AT A+P

ARTIST TALKS  
CAULEEN SMITH

WEDNESDAY, MARCH 11, 7:30PM

ARTISTS-IN-RESIDENCE  
SANDY RODRIGUEZ WITH  
ISABELLE LUTTERODT  
WEDNESDAY, MARCH 18, 7:30PM

KEVIN BEASLEY  
SATURDAY, APRIL 11, 3PM

FRED MOTEN WITH PAT THOMAS  
THURSDAY, APRIL 16, 7:30PM

JENNIE C. JONES  
THURSDAY, MAY 14, 7:30PM

ARTIST-IN-RESIDENCE  
AALIA BROWN WITH JAMILLAH JAMES  
THURSDAY, APRIL 30, 7:30PM

ARTISTS-IN-RESIDENCE OPEN STUDIOS  
SATURDAY, MAY 23, 2PM–6PM

ABOVE: CONSTRUCTION OF ESO WON BOOKS AND ART + PRACTICE PROGRAM SPACE, NOVEMBER 2014. PHOTO: SEAN SHIM BOYLE.



# APPARITIONS: FROTTAGES AND RUBBINGS FROM 1860 TO NOW

CONTINUES THROUGH MAY 31, 2015

The technique known as frottage, from the French *frotter* (to rub), involves the rendering of an image by placing a sheet of paper over an object or dimensional surface and rubbing it with a marking agent such as graphite or wax crayon. It combines elements of drawing, printmaking, and sculpture, generating sophisticated and unexpected compositions that capture the more elusive properties of objects. As a partially indirect process intended for unpremeditated imagery, frottage became one of the fundamental practices of surrealist drawing. It continued to be explored throughout the 20th century and remains a source of experimentation in studios today. This exhibition presents diverse interpretations of the technique by artists from various periods and regions, from historical figures like the Czech surrealists Jindrich Štýrský and Toyen to modern and contemporary artists such as Alighiero Boetti, Louise Bourgeois, Roy Lichtenstein, Michelle Stuart, and Matt Mullican. Also on view are rare examples of 19th century rubbings of British funerary plaques that belong to a long tradition of recording reliefs for posterity. Shadows and ethereal forms are lifted onto the paper like apparitions in this eclectic yet singularly focused selection of works.



*Apparitions: Frottages and Rubbings from 1860 to Now* is co-organized by the Hammer Museum, Los Angeles, and The Menil Collection, Houston. The exhibition is curated by Allegra Pesenti, curator at large, Menil Drawing Institute, and former curator of the Grunwald Center for the Graphic Arts, with Leslie Cozzi, curatorial associate.

The Hammer Museum's presentation is made possible by Alice and Nahum Lainer.

Major support is provided by the LLWW Foundation. Generous funding is also provided by Dana Delany, Margo Leavin, Alisa and Kevin Ratner, Jennifer Simchowicz, and Helen and Sam Zell.

**ARTIST TALK**  
**DO HO SUH**  
**TUESDAY, APRIL 28, 7:30PM**

ABOVE: ROY LICHTENSTEIN. *FOOT MEDICATION*, 1962 (DETAIL). GRAPHITE AND GRAPHITE RUBBING ON PAPER. 22 ¼ x 22 ¾ IN. (56.5 X 57.3 CM). THE MENIL COLLECTION, HOUSTON. BEQUEST OF DAVID WHITNEY. ©ESTATE OF ROY LICHTENSTEIN.

## HAMMER PROJECTS

Hammer Projects is made possible thanks to the generous support of the Horace W. Goldsmith Foundation, Susan Bay Nimoy and Leonard Nimoy, Hope Warschaw and John Law, and Maurice Marciano.

Additional support is provided by Good Works Foundation and Laura Donnelley, the Decade Fund, and the David Teiger Curatorial Travel Fund.

### LAUREN BON AND METABOLIC STUDIO

MARCH 7 – MAY 10, 2015

*Hammer Projects: Lauren Bon and Metabolic Studio* features *The Catch* (2015), an immersive sound work that forecasts the aural and visual reverberations of an enormous water-wheel that Bon and the Studio are also developing. This installation, created with both the Sonic and Optic Divisions of Metabolic Studio, an arm of Bon's art practice, coincides with the Hammer's year of water programming, *The Next Wave*, and the ground breaking for the waterwheel project adjacent to the Los Angeles River in downtown Los Angeles, later this year.

*Hammer Projects: Lauren Bon and Metabolic Studio* is organized by Allison Agsten, curator, Public Engagement, with January Parkos Arnall, curatorial assistant, Public Engagement.

The Hammer Museum's Public Engagement program is supported in part by the Los Angeles County Board of Supervisors through the Los Angeles County Arts Commission.

ABOVE: LAUREN BON AND METABOLIC STUDIO. *THE CATCH*, 2015. ARTIST RENDERING FOR SITE-SPECIFIC INSTALLATION. COURTESY OF THE ARTIST.



### MARY REID KELLEY

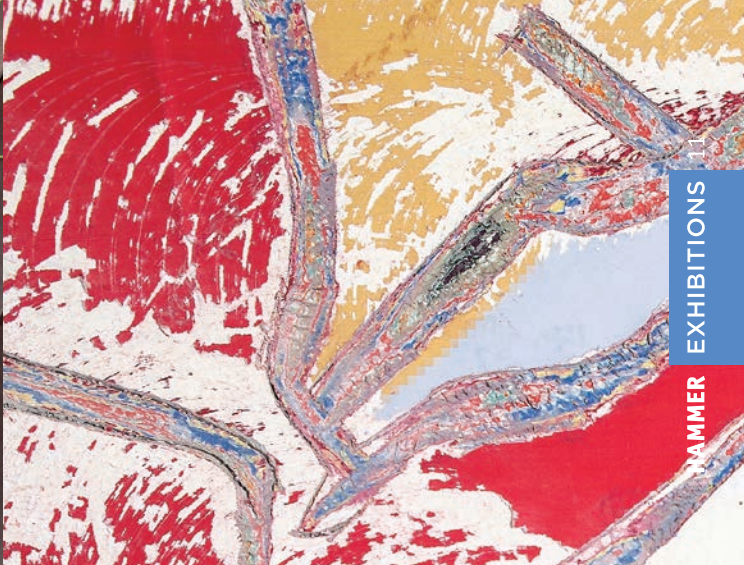
MAY 23 – SEPTEMBER 27, 2015

Trained as a painter, Mary Reid Kelley works with videographer Patrick Kelley to create narrative videos set within her own stylized black and white drawings. Her characters—usually played by Reid Kelley—move through her black-and-white scenery and speak in poetic verse written by the artist. The Hammer will present her trilogy examining the myth of the Minotaur and its family history: *Priapus Agonistes* (2013), *Swinburne's Pasiphae* (2014), and *The Thong of Dionysus* (2015). A mix of Greek cartoon, slapstick, and multidimensional wordplay, Reid Kelley's videos explore the roles of women, sexuality, language, and art historical tropes. This exhibition will be the first presentation of the complete video trilogy and will include portraits of her recurring characters in the Hammer's courtyard light boxes.

*Hammer Projects: Mary Reid Kelley* is organized by Hammer curatorial associate Emily Gonzalez-Jarrett.

ABOVE: MARY REID KELLEY WITH PATRICK KELLEY. STILL FROM *PRIAPUS AGONISTES*, 2013 (DETAIL). SINGLE-CHANNEL BLACK AND WHITE HD VIDEO WITH SOUND. 15:09 MIN. COURTESY OF THE ARTISTS; FREDERICKS & FREISER GALLERY, NEW YORK; SUSANNE VIELMETTER LOS ANGELES PROJECTS; AND PILAR CORRIAS, LONDON.





## CONTINUING PROJECTS

### LILY VAN DER STOKKER: THE TIDY KITCHEN

CONTINUES THROUGH MAY 17, 2015

Hammer Projects: Lily van der Stokker is generously supported by the Mondriaan Fund.

### PEDRO REYES: THE PEOPLE’S UNITED NATIONS (pUN)

CONTINUES THROUGH MAY 24, 2015

See page 13

### THIS IS THE END

CONTINUES THROUGH JUNE 7, 2015

Tommy Hartung: January 10–February 22  
Loretta Fahrenholz: February 24–April 12  
Ed Atkins: April 14–June 7

### THE AFGHAN CARPET PROJECT

JUNE 13 – SEPTEMBER 20, 2015

*The Afghan Carpet Project* features six carpets designed by L.A.-based contemporary artists—**Lisa Anne Auerbach**, **Liz Craft**, **Meg Cranston**, **Francesca Gabbiani**, **Jennifer Guidi**, and **Toba Khedoori**—which were handmade by weavers in Afghanistan. The exhibition is the culmination of a project that began with a trip to Afghanistan to visit weavers in Kabul and Bamian in March 2014. The trip provided the artists with insight into the craft and the production process, as well as the living and working conditions for the weavers. Following the trip, each artist came up with an original design for her carpet—some reflecting upon the experience, and others derived out of the artists’ respective practices. The project was initiated by the not-for-profit organization AfghanMade, along with carpet producer Christopher Farr, Inc. with the goal of collaborating with women weavers in Afghanistan. All profits from carpet sales (after fabrication costs are recovered) will benefit Arzu Studio Hope, an organization that established weaving studios in Afghanistan, which provide fare wages, education, and healthcare to Afghan women. The show will also include photo documentation of the trip, shot by Auerbach.

This exhibition is organized by curator Ali Subotnick with Emily Gonzalez-Jarrett, curatorial associate.

OPPOSITE LEFT: THOMAS DEMAND. *DAILY #11*, 2009 (DETAIL). FRAMED DYE TRANSFER PRINT. 28 7/8 X 32 7/8 IN. (73.4 X 82.4 CM). PRIVATE COLLECTION. © 2014 ARTISTS RIGHTS SOCIETY (ARS), NEW YORK / VG BILD-KUNST, BONN.

OPPOSITE RIGHT: PRODUCTION IMAGES FOR *SCORCHED EARTH*. COURTESY OF THE ARTIST AND HAUSER & WIRTH, LONDON.

### PERFECT LIKENESS: PHOTOGRAPHY AND COMPOSITION

JUNE 21 – SEPTEMBER 13, 2015

There was a time when it seemed a plausible goal for an artist to resolve a picture so conclusively that the result of his or her work would transcend simple representation. For much of the history of photography, however, ambitious photographers have been suspicious of images that are too beautiful, too “photogenic,”—too perfect. Such images often seemed too close to commercial work, and thus inimical to art. Many photographers were thus resistant to the conventional idea of good composition. Since the late 1970s, however, there has been an increasing interest in photography as a form of picture-making, a tendency that has led to a renewed interest in composition. Featuring work by twenty-four artists, including Thomas Demand, Annette Kelm, Barbara Probst, Hiroshi Sugimoto, Jeff Wall, and Christopher Williams, *Perfect Likeness* looks at a variety of strategies for making fully-resolved pictures.

#### UCLA DEPARTMENT OF ART LECTURE RUSSELL FERGUSON

THURSDAY, MAY 21, 7:30PM (see page 20)

*Perfect Likeness: Photography and Composition* is organized by adjunct curator Russell Ferguson. The curatorial associate for the exhibition is Emily Gonzalez-Jarrett.

*Perfect Likeness: Photography and Composition* is made possible by a major grant from The Andy Warhol Foundation for the Visual Arts.

Major support is provided by the National Endowment for the Arts. Generous funding is also provided by Contemporary Collectors—Orange County, Trish and Jan de Bont, Margo Leavin, The Robert Mapplethorpe Foundation, and Pasadena Art Alliance. Media sponsorship is provided by KCRW 89.9FM.

### MARK BRADFORD: SCORCHED EARTH

JUNE 21 – SEPTEMBER 27, 2015

Comprising approximately twelve new paintings—including a major wall painting in the lobby gallery—and a multimedia installation, this new body of work by the Los Angeles–based artist Mark Bradford refers to formative moments in his life and ruminations on the body in crisis. As an artist who has long been interested in strategies of mapping and the psychogeography of the city he calls home, Bradford uses his characteristic painting style to excavate the terrain, emotional, political—and actual—that he inhabits. Examining the moment and afterlife of the 1992 uprisings in Los Angeles, which he experienced from his studio in Leimert Park, Bradford has captured the lasting emotional impact of the events in these new paintings.

The second component of this exhibition is an audio installation reimagining Eddie Murphy’s stand-up comedy routine and the searing sexual commentary that is part of its history in American culture. Bradford’s early identification as an artist emerging in the mid-1980s was informed by queer and feminist politics and the developing AIDS crisis. With this work, he explodes the deep cultural fears and misrepresentations of black identity and gender, providing a trenchant critique of pervasive cultural racism and homophobia in society as a whole.

*Mark Bradford: Scorched Earth* is curated by Connie Butler, chief curator, with Jamillah James, assistant curator.

*Mark Bradford: Scorched Earth* is made possible by The Monkash Family Foundation.

Additional support is provided by The Broad Art Foundation.

ABOVE LEFT: LILY VAN DER STOKKER. *THE TIDY KITCHEN*, 2015. ACRYLIC PAINT ON WALL AND WOOD PANELS. NOTH WALL: 48.4 X 21.5 FT. (6.53 X 14.74 M); EAST WALL: 21.5 X 21.5 FT. (6.53 X 6.53 M). COURTESY OF THE ARTIST; KAUFMANN REPETTO, MILAN AND NEW YORK; AND KOENIG AND CLINTON, NEW YORK.

ABOVE RIGHT: VISITING A CARPET STORE IN KABUL AT THE BASE OF THE HISTORIC GARDENS OF BABUR. PHOTO BY LISA ANNE AUERBACH.



# LUNCHTIME ART TALKS

Lunchtime Art Talks take place every Wednesday at 12:30pm. The Hammer’s curatorial department leads free and insightful 15-minute discussions about works of art currently on view or from museum collections. \*Speaker



March 4  
Lily van der Stokker  
*The Tidy Kitchen*, 2015  
\*Anne Ellegood



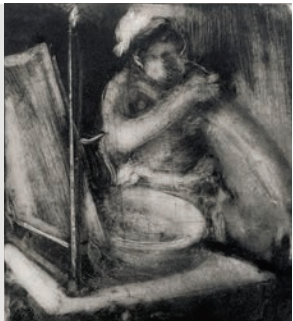
March 11  
George Bellows  
*Murder of Edith Cavell*, 1918  
\*David Rodes



March 18  
Charles Gaines  
*Faces, Set #9:*  
*Pam Criswell*, 1978  
\*January Parkos Arnall



March 25  
Jennifer Bornstein  
*Camera*, 2014  
\*Ali Subotnick



April 1  
Edgar Degas  
*La Toilette (Les bras)*, 1880-1885  
\*Cynthia Burlingham



April 8  
Michelle Stuart  
*#7 Echo*, 1973  
\*Connie Butler



April 15  
Charles Gaines  
*Landscape: Assorted Trees with Regression*, 1981  
\*Jamillah James



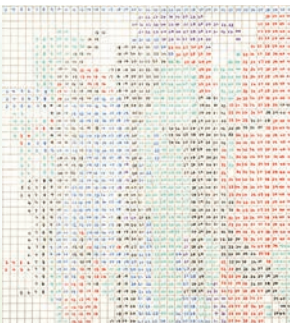
April 22  
Ed Atkins  
*Even Pricks*, 2013  
\*Aram Moshayed



April 29  
Pedro Reyes  
*Drone Dove*, 2013  
\*Allison Agsten



May 6  
Do Ho Suh  
*Rubbing/Loving Project: Metal Jacket*, 2014  
\*Leslie Cozzi



May 13  
Charles Gaines  
*Motion: Trisha Brown Dance, Set #11*, 1980-81  
\*Marcela Guerrero



May 20  
Mary Reid Kelley  
*The Thong of Dionysus*, 2015  
\*Emily Gonzalez-Jarrett



May 27  
Alfred Stevens  
*Portrait of Sarah Bernhardt*, 1885  
\*MacKenzie Stevens



## PUBLIC ENGAGEMENT

### OPEN REHEARSAL: CLAIRE CHASE, CERCHIO TAGLIATO DEI SUONI

WEDNESDAY, APRIL 1, & THURSDAY, APRIL 2, 4-7PM

In this collaboration with Center for the Art of Performance at UCLA, Hammer visitors are given a rare glimpse into the development of a performative work when the flutist and MacArthur fellow **Claire Chase** publicly rehearses Salvatore Sciarrino’s *Cerchio tagliato dei suoni* alongside more than 100 flutists. The rehearsals are a prelude to a performance of the piece at UCLA Schoenberg Hall on April 4.

### CONTEMPLATIVE ART VIEWING

FRIDAY, APRIL 10, 1-2 PM

Mindfulness educator **Mitra Manesh** will lead a one-hour art-viewing experience designed to deepen the exploration of art works by focusing on the suspension of judgment, creating an opportunity for art, artist, and self to be considered anew.

### LIBROS SCHMIBROS BOOK CLUB

SUNDAY, APRIL 26, 1-2PM

Inspired by Pedro Reyes’s *The People’s United Nations*, Libros Schmibros will take up Luis Alberto Urrea’s *Into the Beautiful North*, a quest story with a playful sense of humor and a suspicion that globalization’s problems might not be insoluble after all.

The Hammer Museum’s Public Engagement program is supported in part by the Los Angeles County Board of Supervisors through the Los Angeles County Arts Commission.

Public Engagement is organized by Allison Agsten, curator Public Engagement, with January Parkos Arnall, curatorial assistant, Public Engagement.

PEDRO REYES, *THE PEOPLE’S UNITED NATIONS (PUN)*, 2013. EVENT AT THE QUEENS MUSEUM, QUEENS, NEW YORK, NOVEMBER 23–24, 2013. COURTESY OF THE QUEENS MUSEUM OF ART. PHOTO BY RAMIRO CHAVEZ.

### PEDRO REYES THE PEOPLE’S UNITED NATIONS GENERAL ASSEMBLY

SATURDAY, MAY 2, & SUNDAY, MAY 3, 10AM-5PM

The People’s United Nations, presented as part of *Hammer Projects: Pedro Reyes*, is an experimental gathering of volunteers selected to represent as many of the 195 member and observer states of the UN as possible. *pUN General Assembly* enlists regular citizens who are based in the L.A. area and are connected by family ties or by birth to the nations represented at the UN to engage in activities that test Reyes’s hypothesis that conflict-resolution techniques used in social psychology, theater, and art can help solve the world’s most challenging problems.

### ARTIST TALK

#### PEDRO REYES

FRIDAY, MAY 1, 7:30PM

*Hammer Projects: Pedro Reyes* is organized by senior curator Anne Ellegood with MacKenzie Stevens, curatorial assistant. The *pUN General Assembly* is organized in collaboration with Allison Agsten, curator, Public Engagement, and January Parkos Arnall, curatorial assistant, Public Engagement. First conceived and presented at the Queens Museum in 2013, whose building was the site of the United Nations from 1946 to 1950.

*Hammer Projects: Pedro Reyes* is generously supported by Bettina Korek and Alexandra Shabtai.



CALENDAR HAMMER MUSEUM PROGRAMS ARE FREE TO THE PUBLIC

MARCH

1 Sun 11AM	Hammer Kids   Close Encounters (p. 24) <b>Build-a-Bike</b>
2PM & 2:45PM	<i>Charles Gaines</i> tour (p. 6)
3 Tue 7:30PM	The Next Wave (p. 21) <b>Urban Adaptations for Rising Sea Levels</b>
4 Wed 7:30PM	Hammer Screenings   Brian Weil (p. 18) <i>Kate Bornstein is a Queer and Pleasant Danger</i>
8 Sun 11AM	Hammer Kids   Family Flick Film Series (p. 25) <i>The Music Box and Way Out West</i>
10 Tue 7:30PM	Hammer Lectures (p. 20) <b>Charles Atlas: Revenge of the New Puritan</b>
15 Sun 11AM	Hammer Kids   Look Together (p. 24) <b>How to Make Music about Art</b>
18 Wed 7:30PM	Panel Discussion   Brian Weil (p. 18) <b>How to Change the World</b>
19 Thu 7:30PM	Hammer Forum (p. 17) <b>Terror in the Name of Islam</b>
22 Sun 11AM	Hammer Kids   Film Workshop (p. 25) <b>Junior Archivist</b>
24 Tue 7:30PM	Panel Discussion   Brian Weil (p. 18) <b>We Have Never Been Queer</b>
25 Wed 7:30PM	Hammer Screenings   I Am Armenian (p. 19) <i>Ravished Armenia</i>
26 Thu 7:30PM	Hammer Conversations (p. 16) <b>Seleta Reynolds &amp; Janette Sadik-Kahn</b>
29 Sun 11AM	Hammer Kids   826LA@Hammer (p. 24) <b>Design Intervention</b>
31 Tue 7:30PM	Hammer Presents (p. 22) <b>Sister Spit: The Next Generation</b>

Ticketing

Free tickets are required and available at the box office, one ticket per person on a first come, first served basis. Hammer members enjoy priority seating and seat selection, subject to availability. Membership does not guarantee seating. Early arrival is recommended.

All Hammer public programs are free and made possible by a major gift from the Dream Fund at UCLA.

Generous support is also provided by Susan Bay Nimoy and Leonard Nimoy, Good Works Foundation and Laura Donnelley, an anonymous donor, and all Hammer members.

The Hammer’s digital presentation of its public programs is made possible by the Billy and Audrey L. Wilder Foundation.

APRIL

1 Wed 4PM	Public Engagement (p. 13) <b>Open Rehearsal: Claire Chase</b>
7:30PM	The Next Wave (p. 21) <b>Fracking and Our Water</b>
2 Thu 4PM	Public Engagement (p. 13) <b>Open Rehearsal: Claire Chase</b>
7:30PM	Artist Talk (p. 6) <b>Charles Gaines &amp; Sam Durant</b>
8 Wed 7:30PM	Hammer Presents (p.22) <b>Flux Screening Series</b>
9 Thu 7:30PM	Hammer Presents (p. 22) <i>Hot Type: 150 Years of The Nation</i>
10 Fri 1PM	Public Engagement (p. 13) <b>Contemplative Art Viewing</b>
12 Sun 11AM	Hammer Kids   Family Flicks Screening Series (p. 25) <i>Earth</i>
14 Tue 7:30PM	Hammer Screenings   I Am Armenian (p. 19) <i>Aghet—Ein Völkermord</i>
15 Wed 7:30PM	Hammer Forum (p. 17) <b>The Global Underground Economy</b>
16 Thu 7:30PM	Hammer Readings   Poetry (p. 18) <b>Michael Waters</b>
19 Sun 11AM	Hammer Kids   826LA@Hammer (p. 24) <b>The Advice-Bot Repair Workshop</b>
2PM	Hammer Presents (p. 19) <b>Honoring the Armenian Masters</b>
21 Tue 7:30PM	Hammer Screenings   The Cremaster Cycle (p. 23) <i>Cremaster 4 &amp; Cremaster 1</i>
22 Wed 7:30PM	Hammer Screenings   The Cremaster Cycle (p. 23) <i>Cremaster 5 &amp; Cremaster 2</i>
23 Thu 7:30PM	Hammer Screenings   The Cremaster Cycle (p. 23) <i>Cremaster 3</i>
24 Fri 7:30PM	Hammer Conversations (p. 16) <b>Matthew Barney &amp; Kenneth Reinhard</b>
26 Sun 11AM	Hammer Kids   Close Encounters (p. 24) <b>Textures of You: The Art of Frottage</b>
1PM	Public Engagement (p. 13) <b>Libros Schmibros Book Club</b>

28 Tue 7:30PM	Artist Talk (p. 8) <b>Do Ho Suh</b>
29 Wed 7:30PM	Hammer Lectures (p. 20) <b>Peter Sellars &amp; Richard Ross</b>
30 Thu 7:30PM	Artist Talk (p. 5) <b>Thomas Heatherwick</b>
MAY	
1 Fri 7:30PM	Artist Talk (p. 13) <b>Pedro Reyes</b>
2 Sat 10AM	Public Engagement (p. 13) <b>Pedro Reyes: The People’s United Nations (pUN) General Assembly</b>
3 Sun 10AM	Public Engagement (p. 13) <b>Pedro Reyes: The People’s United Nations (pUN) General Assembly</b>
11AM	Hammer Kids   Look Together (p. 24) <b>How to Make a Book about Art</b>
7 Thu 7:30PM	Hammer Readings   Poetry (p. 18) <b>V. Penelope Pelizzon</b>
10 Sun 11AM	Hammer Kids   Family Flicks Screening Series (p. 25) <i>Hello, Dolly!</i>
11AM	Hammer Kids   Close Encounters (p. 24) <b>Make &amp; Take a Seat</b>
13 Wed 7:30pm	The Next Wave (p. 21) <b>Do Our Rivers Have a Chance?</b>
14 Thu 7:30PM	Hammer Screenings   I Am Armenian (p.19) <i>The River Ran Red</i>
19 Tue 7:30PM	Hammer Forum (p. 17) <b>The Militarization of America’s Police Forces</b>
20 Wed 7:30PM	Panel Discussion (p. 6) <i>A History of Refusal: Black Artists and Conceptualism</i>
21 Thu 7:30PM	UCLA Department of Art Lectures (p. 20) <b>Russell Ferguson</b>
27 Wed 7:30PM	Hammer Presents (p. 22) <b>The Music of Osvaldo Golijov &amp; Kaija Saariaho: A Visual Concert</b>
28 Thu 7:30PM	Hammer Presents (p.22) <b>Open Projector Night</b>
31 Sun 11AM	Hammer Kids   826LA@Hammer (p. 24) <b>Build Your Own Treasure Map</b>

TOURS

EXHIBITION TOURS

SATURDAYS AT 1PM

45-minute tours of selected works in special exhibitions are facilitated by Hammer student educators.

ART IN CONVERSATION

THURSDAYS AT 6:45PM

30-minute talks about connections and comparisons between two works of art are led by Hammer student educators.

GROUP TOURS

The Hammer offers private tours for groups and a variety of options for K–12th-grade classes. For more information or to make a reservation, please call 310-443-7041 or visit [hammer.ucla.edu](http://hammer.ucla.edu). Self-guided groups of 10 or more require a reservation. Please call 310-443-7041.

MINDFUL AWARENESS

THURSDAYS, 12:30–1PM

Mindful Awareness is the moment-by-moment process of actively and openly observing one’s physical, mental, and emotional experiences. Mindfulness has scientific support as a means to reduce stress, improve attention, boost the immune system, reduce emotional reactivity, and promote a general sense of health and well-being.

The free weekly drop-in sessions take place in the comfortable seats of the Billy Wilder Theater and are open to all who are interested in learning how to live more presently in life. No special clothing is required, and participants are welcome to stay for 5 minutes or enjoy the entire 30-minute session.

Sessions are led by instructors from the UCLA Mindful Awareness Research Center. Visit [marc.ucla.edu](http://marc.ucla.edu) to learn more about the UCLA Mindful Awareness Research Center.

HAMMER MUSEUM

10899 Wilshire Boulevard, Los Angeles, CA 90024  
310-443-7000 | [hammer.ucla.edu](http://hammer.ucla.edu)

Hammer Public Programs are organized by Claudia Bestor, director, Public Programs.





# HAMMER CONVERSATIONS

SELETA REYNOLDS AND JANETTE SADIK-KAHN

THURSDAY, MARCH 26, 7:30PM

**Seleta Reynolds** is general manager of the Los Angeles Department of Transportation, where she oversees an annual budget of \$526 million and leads the day-to-day operations of 2,000 employees managing more than 6,500 miles of streets, 35,000 parking meters, and the most advanced traffic signal system in the country. Reynolds is responsible for implementing Great Streets for Los Angeles, a plan to reduce traffic fatalities, double the number of people riding bikes, and expand access to integrated transportation choices. **Janette Sadik-Khan** served as commissioner of the New York City Department of Transportation from 2007 to 2013. She oversaw a series of transformative projects, including creating more pedestrian space in Times Square and along Broadway from Columbus Circle to Union Square, the planning and launch of seven Select Bus Service routes, and the nation's largest bike share program.

MATTHEW BARNEY AND KENNETH REINHARD

FRIDAY, APRIL 24, 7:30PM

Multimedia artist **Matthew Barney's** epic *Cremaster Cycle* is a five-part film accompanied by related sculptures, photographs, and drawings. His recent collaborative project with the composer Jonathan Bepler, *River of Fundament*, combines narrative cinema with elements of live performance, sculpture, and opera. **Kenneth Reinhard** is associate professor of English and Comparative Literature at UCLA. His fields of research and teaching include the history of critical and aesthetic theory, contemporary critical theory, Jewish studies, and opera. He is co-author of *The Neighbor: Three Inquiries in Political Theology* and *After Oedipus: Shakespeare in Psychoanalysis*. He also writes performance reviews for *Opera Quarterly*.

The Hammer presents a screening of *The Cremaster Cycle* in its entirety during the week of April 21, culminating in this conversation at the Hammer on April 24 and the West Coast premiere of *River of Fundament* at CAP UCLA's Royce Hall on April 25. (See page 23 for details)

TOP TO BOTTOM: SELETA REYNOLDS, JANETTE SADIK-KHAN, MATTHEW BARNEY, KENNETH REINHARD (PHOTO: LILLIANA SOTO).



# HAMMER FORUM

Hammer Forum is made possible in part by Bronya and Andrew Galef.

## TERROR IN THE NAME OF ISLAM

THURSDAY, MARCH 19, 7:30PM

Violent extremism and counter-terrorism expert **Richard Barrett** and former jihadi and author of *Undercover Jihadi* **Mubin Shaikh** provide insight into why young Muslims in the diaspora join jihadist movements. Barrett is a board member of the International Centre for Counter-Terrorism and the Center on Global Counterterrorism Cooperation. He led the UN Monitoring Team on al-Qaida and the Taliban from 2004 to 2013. At age 19, Shaikh, a Canadian, became a supporter of the militant jihadi culture. The 9/11 attacks prompted him to travel to Syria and study Arabic and Islamic culture but Shaikh eventually relinquished his violent interpretations of Islam and volunteered with the Canadian Security Intelligence Service to fight terrorism.

## THE GLOBAL UNDERGROUND ECONOMY

WEDNESDAY, APRIL 15, 7:30PM

The world is awash with off-the-books, criminal, kleptocratic, untaxed, or dirty money that is laundered into the global financial system. **James Henry**—an economist, lawyer and investigative journalist and the lead researcher for the Tax Justice Network—joins us to outline the global network of hidden money along with **Zorka Milin**, the director of research for Financial Transparency at Global Witness and a visiting fellow at Yale University with the Global Justice Program, who investigates the sources and facilitators of money behind conflict, corruption, and environmental, destruction.

## THE MILITARIZATION OF AMERICA'S POLICE FORCES

TUESDAY, MAY 19, 7:30PM

With the cop on the beat armed with military-grade hardware and the streets of America often resembling war zones, we look into what is driving the militarization of our police. **Elizabeth Beavers**, legislative associate for militarism and civil liberties at the Friends Committee on National Legislation, works to roll back the Pentagon's massive giveaway of surplus military hardware to police forces. Former Seattle police chief **Norm Stamper**, who now openly regrets the use of military-style policing during the infamous WTO riots of 1999, is the author of *Breaking Rank: A Top Cop's Exposé of the Dark Side of American Policing*.

Hammer Forum is moderated by **Ian Masters**, journalist, author, screenwriter, documentary filmmaker, and host of the radio programs *Background Briefing*, Sundays at 11AM, and *The Daily Briefing*, Monday through Thursday at 5PM, on KPFK 90.7 FM.





## POETRY

This series of readings is organized and hosted by **Stephen Yenser**, poet and professor at UCLA and author of *A Boundless Field: American Poetry at Large* and *Blue Guide*.

### MICHAEL WATERS

**THURSDAY, APRIL 16, 7:30PM**

**Michael Waters's** books include the forthcoming *Celestial Joyride*, *Gospel Night Darling Vulgarly*, finalist for the *Los Angeles Times* Book Prize, and *Parthenopi: New and Selected Poems*, among others. The recipient of five Pushcart Prizes and numerous fellowships, Waters has also edited several anthologies, including *Contemporary American Poetry* and *Perfect in Their Art: Poems on Boxing from Homer to Ali*.

### V. PENELOPE PELIZZON

**THURSDAY, MAY 7, 7:30PM**

**V. Penelope Pelizzon's** latest book is *Whose Flesh Is Flame, Whose Bone Is Time*. Her first book, *Nostos*, won the Hollis Summers Prize and the Poetry Society of America's Norma Farber First Book Award. Pelizzon's other awards include an Amy Lowell Poetry Travelling Scholarship, a Lannan Foundation Writing Residency Fellowship, and a "Discovery"/ The Nation Award.

Poetry is supported, in part, by the UCLA Department of English and Friends of English.

ABOVE LEFT: MICHAEL WATERS, V. PENELOPE PELIZZON.  
ABOVE RIGHT: BRIAN WEIL, *TRANSVESTITE SAFE-SEX OUTREACH WORKER*, SANTO DOMINGO, DOMINICAN REPUBLIC, 1987, 31 $\frac{1}{16}$  X 31 $\frac{1}{16}$  INCHES, GELATIN SILVER PRINT, CENTER FOR CREATIVE PHOTOGRAPHY, UNIVERSITY OF ARIZONA, ON EXTENDED LOAN FROM KENNETH C. WEIL.

## BRIAN WEIL

The Hammer, in collaboration with the Santa Monica Museum of Art and its presentation of *Brian Weil, 1979–95: Being in the World*, hosts a series of programs exploring the invisible communities that the extraordinary photographer sought to illuminate in his photographs.

### KATE BORNSTEIN IS A QUEER AND PLEASANT DANGER

**WEDNESDAY, MARCH 4, 7:30PM**

**Kate Bornstein** has been instrumental in raising trans-gender visibility. Bornstein joins director **Sam Feder** to discuss this meditative and playful documentary portrait. (2014, Dir. S. Feder, 72 min.)

### HOW TO CHANGE THE WORLD

**WEDNESDAY, MARCH 18, 7:30PM**

How do participatory art practices shift culture? Join the discussion with **Tiny** aka **Lisa Gray-Garcia**, the cofounder of *POOR Magazine* and Homefulness Project; AIDS activist **Shoshanna Scholar**; and **Tony Valenzuela**, the executive director of Lambda Literary. Moderated by **Amy Scholder**.

### WE HAVE NEVER BEEN QUEER

**TUESDAY, MARCH 24, 7:30PM**

**Paul B. Preciado**, the author of *Testo Junkie*, discusses the future of gender and how to avoid the new normal with **Jack Halberstam**, gender studies guru. Moderated by writer **Maggie Nelson**, author of *The Art of Cruelty*.

*Brian Weil, 1975–95: Being in the World*, on view through April 26, at the Santa Monica Museum of Art, Bergamot Station, Santa Monica. Visit [www.smmoa.org](http://www.smmoa.org) for details.

The exhibition was curated by **Stamatina Gregory** for the Institute of Contemporary Art at the University of Pennsylvania.

## SCREENINGS

## I AM ARMENIAN

In commemoration of the 100th anniversary of the Armenian genocide, we dedicate 2015 to an exploration of multiple facets of Armenian culture, history, and landscape through film.

### RAVISHED ARMENIA

**WEDNESDAY, MARCH 25, 7:30PM**

The story of Aurora Mardigianian, an Armenian girl caught up in the 1915 Armenian genocide, was the basis of a hugely popular book and the 1919 silent film *Ravished Armenia*. After witnessing the murder of her family, Aurora was kidnapped, forced to march more than 1,400 miles, and sold into slavery before finally escaping. All known copies of the film, which starred Aurora herself, have been lost. For this program, the filmmaker **Carla Garapedian** of the Armenian Film Foundation and the film historian **Anthony Slide**, author of *Ravished Armenia and the Story of Aurora Mardigianian*, bring Aurora's compelling story to life through rare film clips and photos.

### AGHET—EIN VÖLKERMORD

**TUESDAY, APRIL 14, 7:30PM**

The prize winning film *Aghet—Ein Völkermord* (aghet is Armenian for "the catastrophe") by the acclaimed German filmmaker **Eric Friedler** deals with the political motives for the continuing silence about the Armenian genocide. This innovative documentary relies on authentic testimonies by European and American personnel stationed in the Near East at the time and Armenian survivors. Acclaimed German actors give these eyewitnesses the opportunity to make their voices heard. Director Eric Friedler joins us for a discussion following the screening. (2010, Dir. E. Friedler, 90 min.)

### THE RIVER RAN RED

**THURSDAY, MAY 14, 7:30PM**

*The River Ran Red* is the epic search for survivors of the Armenian genocide of 1915 along the Euphrates River. From his archives of 400 testimonies of survivors and eye-witnesses, the award-winning filmmaker J. Michael Hagopian weaves a compelling story of terrifying intensity, taking the viewer from the highland waters of the river to the burning deserts of Syria. (2008, Dir. J. M. Hagopian, 60 min.)

### RELATED PROGRAM

**HAMMER PRESENTS**

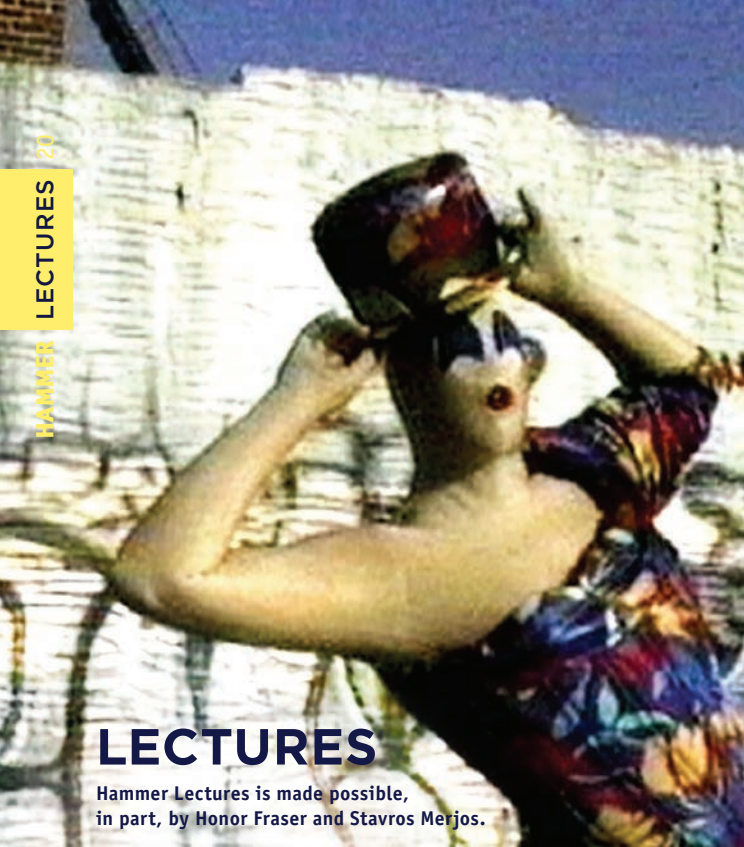
## HONORING THE ARMENIAN MASTERS

**SUNDAY, APRIL 19, 2PM**

Members of the Armenian Music Ensemble at UCLA and the VEM String Quartet present a chamber music program of masterworks of Armenian classical music in commemoration of the anniversary of the Armenian Genocide.

ABOVE: FILM STILL FROM *AGHET - EIN VÖLKERMORD*.





## LECTURES

Hammer Lectures is made possible,  
in part, by Honor Fraser and Stavros Merjos.

### CHARLES ATLAS REVENGE OF THE NEW PURITAN

TUESDAY, MARCH 10, 7:30PM

**Charles Atlas** fused experimental filmmaking with choreography and dance luminaries, queer identity, NYC nightlife in the '90s, and much more. The multivenu *Atlas in LA* festival kicks off at the Hammer, where the media-dance pioneer himself takes the stage to discuss and contextualize his vast and impactful body of work.

#### UCLA DEPARTMENT OF ART LECTURES

### RUSSELL FERGUSON

THURSDAY, MAY 21, 7:30PM

**Russell Ferguson** has organized numerous exhibitions at the Hammer and MOCA. Recently he organized *Damage Control: Art and Destruction since 1950* with Kerry Brougher for the Hirshhorn Museum, Washington, DC. Ferguson will discuss his upcoming Hammer exhibition, *Perfect Likeness*. He is a professor in the UCLA Department of Art.

In conjunction with *Perfect Likeness: Photography and Composition*.

The UCLA Department of Art's visiting lecture series is made possible through the generous support of the William D. Feldman Family Endowed Art Lecture Fund.



### PETER SELLARS & RICHARD ROSS HUMAN FACES IN THE AMERICAN JUVENILE JUSTICE GULAG

WEDNESDAY, APRIL 29, 7:30PM

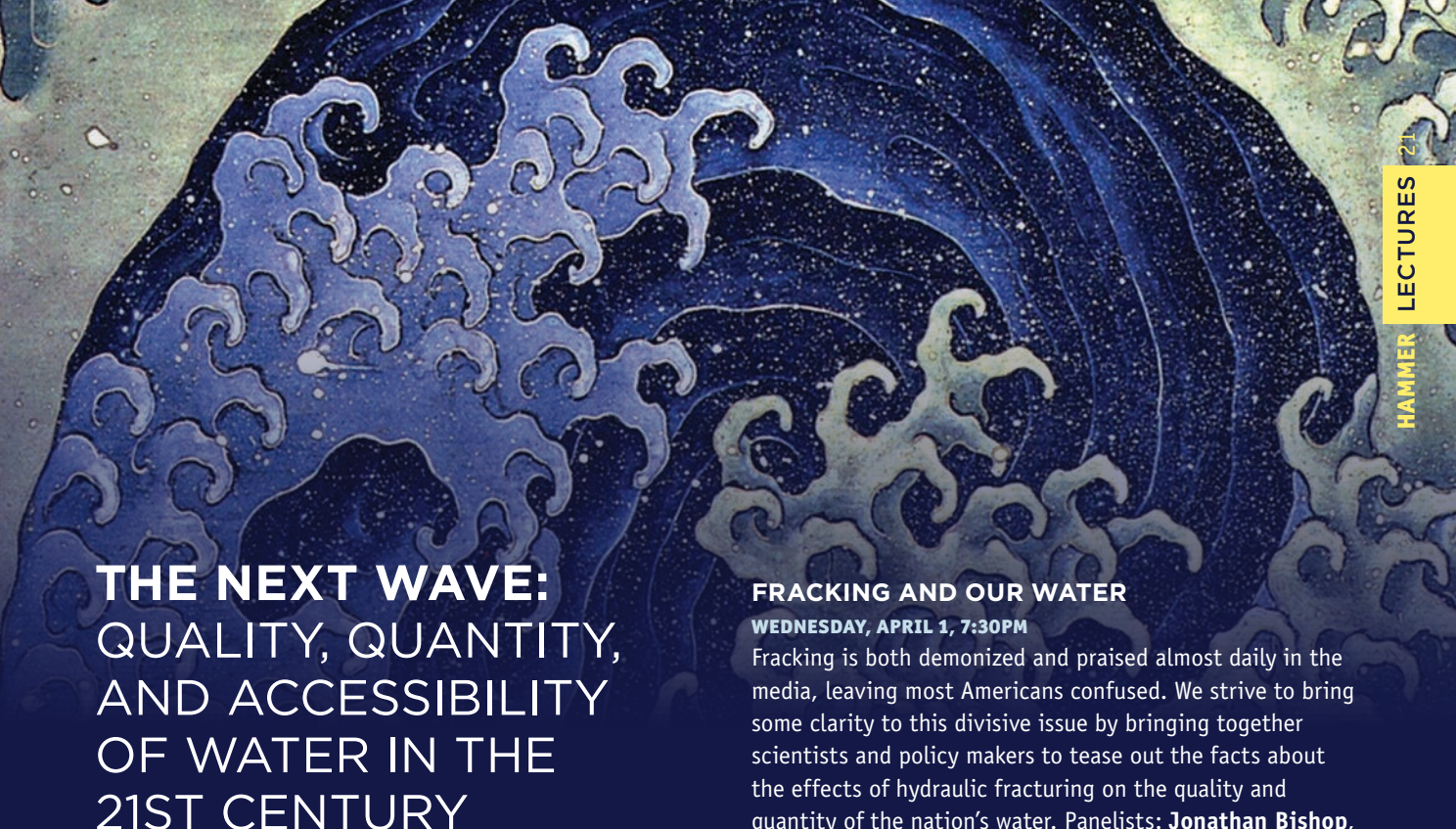
#### CO-PRESENTED WITH THE BOETHIUS INITIATIVE

Juvenile In Justice is a project that documents the placement and treatment of American juveniles sentenced to facilities that punish, treat, confine, assist, and occasionally harm them. The acclaimed photographer **Richard Ross** and the MacArthur fellow artist **Peter Sellars** discuss the project, the reality of incarcerated young people in the United States, and the growing movement for youth justice system reform.

The Boethius Initiative aims to create and develop new images and new vocabulary that foster a shift in attitudes, a new set of relationships, renewed participation, and fresh thinking for 21st century citizens and voters.

ABOVE LEFT: CHARLES ATLAS. STILL FROM *MRS. PEANUT VISITS NEW YORK*, 1992–1999.  
VIDEO, COLOR, SOUND. 6:05 MIN.

ABOVE RIGHT: RICHARD ROSS. *ORIENTATION TRAINING PHASE, YOUTH OFFENDER SYSTEM, PUEBLO, COLORADO, 1*, 2010 (DETAIL).



## THE NEXT WAVE: QUALITY, QUANTITY, AND ACCESSIBILITY OF WATER IN THE 21ST CENTURY

CO-PRESENTED WITH THE UCLA INSTITUTE OF  
THE ENVIRONMENT AND SUSTAINABILITY

Throughout 2015 the Hammer and the UCLA Institute of the Environment and Sustainability explore the most pressing issues surrounding the current and future state of water.

### URBAN ADAPTATIONS FOR RISING SEA LEVELS

TUESDAY, MARCH 3, 7:30PM

Sea levels are expected to rise dramatically over the next 50 to 100 years, and coastal cities like Los Angeles, San Francisco, New York, London, and Shanghai are especially vulnerable. Leading landscape architects, city planners, engineers, and architects discuss adaptations for flood-proofing in our wetter, warmer future. With UC Berkley professor of Landscape Architecture **Kristina Hill**, coastal geomorphologist **Jeremy Lowe**, and civil engineer **Peter Wijsman**.

### FRACKING AND OUR WATER

WEDNESDAY, APRIL 1, 7:30PM

Fracking is both demonized and praised almost daily in the media, leaving most Americans confused. We strive to bring some clarity to this divisive issue by bringing together scientists and policy makers to tease out the facts about the effects of hydraulic fracturing on the quality and quantity of the nation's water. Panelists: **Jonathan Bishop**, California State Water Resources Control Board; water treatment engineer **Subir Bhattacharjee**; Stanford environmental scientist **Robert Jackson**; and **Damon Nagami**, director of the Southern California Ecosystems Project at the NRDC. Moderated by **Mark Gold**, acting director, UCLA Institute of Environmental Sustainability.

### DO OUR RIVERS HAVE A CHANCE?

WEDNESDAY, MAY 13, 7:30PM

River ecosystems have become some of the most endangered places on Earth. Growing human populations, as well as agriculture and industry, are all placing increasing demands on limited water supplies while climate change is exacerbating drought and reducing snow fall conditions. **Steve Fleischli**, director of the Water Program at the NRDC, and hydrologist **Dennis Lettenmaier**, UCLA professor of Geology, will speak on the threats to the world's rivers and what we can do to protect them.

ABOVE: KATSUSHIKA HOKUSAI. *FEMININE WAVE (MENAMI)* (DETAIL).



# PRESENTS

## SISTER SPIT: THE NEXT GENERATION

TUESDAY, MARCH 31, 7:30PM

Sister Spit tours dazzle with stage presentations by critically acclaimed, courageous, hilarious, outspoken feminists. Tonight activist **Virgie Tovar** hosts zinemaker **Myriam Gurba**, writer **Kate Schatz**, and drag artist **Mica Sigourney** plus special L.A. guests **Francesca Lia Block**, **Nikki Darling**, and **Zackary Drucker**. Check out the merch table and cash bar!



## HOT TYPE: 150 YEARS OF THE NATION

THURSDAY, APRIL 9, 7:30PM

This year marks the 150th anniversary of *The Nation*, the oldest weekly magazine in the country. Join us for the West Coast premier of Oscar-winner **Barbara Kopple's** new documentary film, *Hot Type: 150 Years of The Nation*, featuring intimate encounters with the writers, columnists, editors—and interns—who are both custodians of *The Nation's* enduring values of dissent and stewards of its future. The film will be followed by a Q&A with Kopple and *Nation* editor and publisher **Katrina vanden Heuvel**. **Norman Lear** will begin the evening with opening remarks.

## THE MUSIC OF OSVALDO GOLIJOV & KAIJA SAARIAHO: A VISUAL CONCERT

WEDNESDAY, MAY 27, 7:30PM

Soprano **Terri Richter** and the UCLA's **Contempo Flux** ensemble, conducted by **Geoffrey Pope**, present a multi-media concert of live music by two contemporary composers, Osvaldo Golijov and Kaija Saariaho. The evening will showcase Saariaho's *Lonh* and Golijov's *Ayre* a song cycle for soprano, electronics, and chamber ensemble, along with the video graphic design of **Keith Skretch**.

## FLUX SCREENING SERIES

WEDNESDAY, APRIL 8, 7:30PM

The Flux Screening Series at the Hammer presents innovative short films, music videos, filmmaker retrospectives, and interesting visual work from around the globe. Learn more at [flux.net](http://flux.net).



## OPEN PROJECTOR NIGHT

THURSDAY, MAY 28, 7:30PM

The Hammer's Open Projector Night is the most raucous independent short film festival around. Films and videos of all genres have garnered praise and wrath alike. Nationally known and loved comedy team the **Sklar Brothers** emcee, and free popcorn is served. Three winners receive prizes.

Work under 10 minutes only. Sign-ups are first come, first served. Submissions accepted from 7 to 7:30PM.

LEFT TO RIGHT: KATRINA VANDEN HEUVEL (PHOTO: BALDOMERO FERNANDEZ), BARBARA KOPPLE, RANDY AND JASON SKLAR (PHOTO: SCHEURSHOTS.COM).



# THE CREMASTER CYCLE

The Hammer presents Matthew Barney's epic masterwork *The Cremaster Cycle*, screened in its entirety over the course of several days. With near cult status in the art world, *The Cremaster Cycle* is an evocation of the creative process by Barney, a sculptor and performance artist and arguably one of the most important artists of his generation. Visually arresting and often disturbing, *The Cremaster Cycle* is a grand mixture of history, mythology, and autobiography exploring the creation of form. Each of the five films is projected on 35mm film, and presented in the order of its making.

Visit [hammer.ucla.edu/cremaster-cycle](http://hammer.ucla.edu/cremaster-cycle) for more information and a synopsis of each film.

*The Cremaster Cycle* is screened in conjunction with the West Coast premiere of *River of Fundament: A Film by Matthew Barney & Jonathan Bepler* at UCLA's Royce Hall on Saturday, April 25, presented by Center for the Art of Performance (CAP UCLA).

TUESDAY, APRIL 21, 7:30PM

**CREMASTER 4** (1994, 42 min.)

**CREMASTER 1** (1995, 40 min.)

WEDNESDAY, APRIL 22, 7:30PM

**CREMASTER 5** (1997, 55 min.)

**CREMASTER 2** (1999, 79 min.)

THURSDAY, APRIL 23, 7:30PM

**CREMASTER 3** (2002, 182 min.)

HAMMER CONVERSATION

**MATTHEW BARNEY AND KENNETH REINHARD**

FRIDAY, APRIL 24, 7:30PM (see p. 16)

## RIVER OF FUNDAMENT: A FILM BY MATTHEW BARNEY & JONATHAN BEPLER

WEST COAST PREMIERE

ROYCE HALL | SATURDAY, APRIL 25, 5PM

Running time: 5 hours, 52 min., incl. two 20-minute intermissions

Presented by  
Center for the Art of Performance at UCLA

Tickets and information:  
[www.cap.ucla.edu/RiverOfFundament](http://www.cap.ucla.edu/RiverOfFundament)



# HAMMER kids

## 826LA@HAMMER

The Hammer's free collaborative workshops, presented with 826LA, are designed for groups of up to 20 students. **Reservations are encouraged. Please visit [workshops.826la.org](http://workshops.826la.org) or call 310-915-0200.**

## DESIGN INTERVENTION

**SUNDAY, MARCH 29, 11AM-1PM**

**AGES 8-13**

A hospital, a cultural center, a unicorn sanctuary—ever wonder what could make your neighborhood a better place? In this workshop, students write proposals and draft blueprints for a new community structure. Led by designer **Renée Reizman**.

## THE ADVICE-BOT REPAIR WORKSHOP

**SUNDAY, APRIL 19, 11AM-1PM**

**AGES 7-11**

Are you a candy connoisseur, a dodge-ball master, or a superb sleeper? If not, you're still an expert at something. Learn all about advice (the good and the bad) while contributing your own to the reconfiguration of Advice-Bot 2.0. Led by **Anna Williams**, expert pizza eater.

## BUILD YOUR OWN TREASURE MAP

**SUNDAY, MAY 31, 11AM-1PM**

**AGES 8-13**

Learn how to give clear, step-by-step instructions while building a real-life treasure map. Instructor **Neil Gordon** is a publishing professional who has ghostwritten how-to books seen on shows like *Ellen* and *Dr. Oz*.

Hammer Kids is made possible through the generosity of the Anthony & Jeanne Pritzker Family Foundation.

Hammer Kids has also received funding from supporters and friends of the Hammer Museum's Kids' Art Museum Project (K.A.M.P.), an annual family fundraiser. Additional support has been provided by Resnick Foundation, The Rosalinde and Arthur Gilbert Foundation, the Elizabeth Bixby Janeway Foundation, and the Art4Moore Fund of the Tides Foundation.

## CLOSE ENCOUNTERS

Designed for adults and kids ages 5 and up, these lively drop-in programs encourage families to look closely at art, experiment, and create together.

## BUILD-A-BIKE

**SUNDAY, MARCH 1, 11AM-1PM**

Draw inspiration from the designs of Thomas Heatherwick and then design a new bicycle for an imaginative environment—think the moon or the North Pole—with **Dice Yamaguchi**, a designer and bike enthusiast. This program complements the Fowler Museum's exhibition *Round Trip: Bicycling Asia Minor, 1891*.

## TEXTURES OF YOU: THE ART OF FROTTAGE

**SUNDAY, APRIL 26, 11AM-1PM**

Explore the art technique known as frottage by creating your own life-size portrait using found objects such as coins, wood, or leaves. Led by the artist **Ruben Ochoa**, whose work is on view in the exhibition *Apparitions: Frottages and Rubbings from 1860 to Now*.

## MAKE & TAKE A SEAT

**SUNDAY, MAY 10, 11AM-1PM**

Can a chair spin like a top? Can you squeeze a chair out of a machine the way you squeeze toothpaste out of a tube? View surprising chair designs in *Provocations: The Architecture and Design of Heatherwick Studio* and then make a unique seat with the designer **Tanya Aguiñiga**.

## LOOK TOGETHER

In these one-hour programs designed for families with kids ages 8 and up, discover artworks in the galleries and walk away with activities for engaging children with art in any museum.

## HOW TO MAKE MUSIC ABOUT ART

**SUNDAY, MARCH 15, 11AM-12PM**

Discover musical games and activities that can be used to turn any museum visit into an audible concert.

## HOW TO MAKE A BOOK ABOUT ART

**SUNDAY, MAY 3, 11AM-12PM**

Learn simple bookmaking techniques to make mini books filled with words and drawings about art.

Space is limited and available on a first-come, first-served basis. Check-in will begin on-site at 10:30AM on the day of the program.



## SAVE THE DATE

# K.A.M.P.

**KIDS' ART MUSEUM PROJECT**

**SUNDAY, MAY 17, 2015, 10AM - 2PM**

Mark Sunday, May 17, on your calendar and bring the family to the coolest day ever at the Hammer! Artists of all kinds will lead inventive workshops for kids (ages 4-14) at the Hammer's annual family fundraiser, K.A.M.P.

Participating artists include: **Andrea Bowers, Brian Bress, Sam Falls, Liz Glynn, Jennifer Guidi, Channing Hansen, Johanna Jackson and Chris Johanson, Toba Khedoori, Joel Kyack, Liza Lou, Monica Majoli, Marco Perego, Jon Pylypchuk, Amanda Ross-Ho, Aaron Sandnes, Kenny Scharf, and Charlie White.**

Tickets go on sale at the early-bird price of \$125 per person on March 1, and for \$150 per person beginning April 16. All proceeds will benefit the museum's Hammer Kids programming. For additional information and to purchase tickets, please contact Ayano Tsuchiya at 310-443-7073 or [atsuchiya@hammer.ucla.edu](mailto:atsuchiya@hammer.ucla.edu).

LEFT: AT CLOSE ENCOUNTERS PROGRAMS, KIDS EXPERIMENT WITH DIFFERENT MATERIALS, SUCH AS THE MIXED MEDIA USED TO MAKE WHIMSICAL HATS. ABOVE: ARTIST VISHAL JUGDEO LEADS A WORKSHOP AT K.A.M.P. IN 2013. RIGHT: STILL FROM *EARTH*

# Family Flicks

Co-presented by UCLA Film & Television Archive

## THE MUSIC BOX & WAY OUT WEST

**SUNDAY, MARCH 8, 11AM**

**RECOMMENDED FOR AGES 6+**

In the Academy Award-winning short *The Music Box*, Stan and Ollie strive valiantly to deliver a piano to the top of an impossibly long staircase. In *Way Out West*, Stan and Ollie travel to Brushwood Gulch to deliver a deed to a gold mine, encountering a shady saloon owner and his dance-hall girl-friend along the way. (*The Music Box*, 1932, Dir. James Parrott, b/w, 29 min.; *Way Out West*, 1937, Dir. James W. Horne, 35mm, b/w, 65 min.)

## EARTH

**SUNDAY, APRIL 12, 11AM**

**RECOMMENDED FOR AGES 8+**

This soaring nature documentary takes young viewers from the wintry heights of the Himalayas to the steamy rainforests of New Guinea, illuminating the endeavors of animals playing, hunting, and journeying across the planet. (2007, Dirs. A. Fothergill & M. Linfield, 35mm, color, 90 min.)

## HELLO, DOLLY!

**SUNDAY, MAY 10, 11AM**

**RECOMMENDED FOR AGES 6+**

In this colorfully warmhearted musical directed by Gene Kelly, matchmaker Dolly Levi is hired to find a wife for curmudgeonly businessman Horace Vandergelder. (1969, Dir: G. Kelly, 70mm, color, 148 min.)

\*All ages are welcome. Feel free to take a break with infants and toddlers in the theater lobby, where the films are simulcast on a large monitor.

## FILM WORKSHOP JUNIOR ARCHIVIST

**SUNDAY, MARCH 22, 11AM**

Have you ever wanted to touch a reel of film and look at it up close? Kids handle film strips and look at images through a loupe, and then learn to inspect, repair, and protect motion picture film in this hands-on workshop.

This two-hour program is designed for kids ages 8-12 with their grown-ups. Space is limited and available on a first come, first served basis. Registration begins at 10:30AM.







MEMBERSHIP UPGRADE

Show your love for the Hammer and your commitment to L.A. arts and culture by upgrading or joining at the **IMMERSE** level (\$250). You will be invited to join us at the summer director’s reception celebrating *Mark Bradford: Scorched Earth* and *Perfect Likeness: Photography and Composition* on Saturday, June 27, and all other member events throughout the year. Join as a **Hammer Fellow** (\$1,250) and attend a private walk through with the exhibition curators before the party starts.

GIFT MEMBERSHIPS

Do you know someone graduating this spring? Or tying the knot? **HAMMER PLUS** makes a great gift for any occasion—even Mother’s Day and Father’s Day. As a part of our community, **HAMMER PLUS** members meet new friends, attend private events, network with artists and curators, and learn more about the Hammer’s exhibitions. Give us a call at (310) 443-7050. We’re happy to answer questions and help get you started.



PLUS PERKS MEMBERS ONLY  
DIANE KEATON READING:  
*LET’S JUST SAY IT WASN’T PRETTY*  
ON TUESDAY, APRIL 7

**IMMERSE** level members and higher are invited to a private event with Academy Award and Golden Globe winning actress **Diane Keaton** as she reads from her new book *Let’s Just Say It Wasn’t Pretty*—a candid, hilarious, and deeply affecting look at beauty, aging, and the importance of staying true to yourself, no matter what anyone else thinks. A book signing will follow.

HAMMER PATRONS  
STUDIO VISIT

This April, Hammer Patrons will meet with Los Angeles artist **Charles Gaines** and Hammer curator **Anne Ellegood** during a private studio visit. For more information on how to become a Hammer Patron and get more deeply involved with the museum, call (310) 443-7050 or email membership @hammer.ucla.edu.

LEFT: CHARLES GAINES (PHOTO: CHISA HUGHES)  
ABOVE: DIANE KEATON (PHOTO: RUVEN AFANADOR)



Crafted in Poland, our new **Hammer mugs** were made with traditional enamelware techniques that have been in use for more than 100 years. With a classic shape, the mug is available in five different colors. Each one is hand-dipped, some with contrasting colors, to create a mug that is both durable and beautiful. It’s just the right size for your cup morning coffee.



HAMMER.UCLA.EDU  
310-443-7000

Admission  
**FREE FOR EVERYONE**

Hours  
Tue–Fri 11AM–8PM  
Sat–Sun 11AM–5PM

Closed Mondays, July 4,  
Thanksgiving, Christmas Day,  
and New Year’s Day.

Parking  
Available under the museum;  
\$3 with validation. Bikes park free.

Free admission to the Hammer Museum is made possible through the generosity of Erika J. Glazer and Brenda R. Potter.

Board of Directors

**Founder**  
Dr. Armand Hammer  
**Chairman Emeritus**  
Michael A. Hammer  
**Honorary Directors**  
Armie Hammer  
Viktor Armand Hammer  
**Chair**  
Marcy Carsey\*

**President**  
Michael Rubel\*  
Heather R. Axe  
Renée Becnel  
Gene D. Block  
Lloyd E. Cotsen  
Eric Esrailian  
Frank O. Gehry  
Erika J. Glazer\*  
Larry Marx\*  
Steven A. Olsen  
Anthony N. Pritzker  
Lee Ramer  
Kevin L. Ratner\*  
Nelson C. Rising  
Chip Rosenbloom  
John V. Tunney  
Kevin Wall\*  
John Walsh  
Christopher A. Waterman

Board of Overseers

Peter Benedek  
Ruth Bloom  
Richard Buckley  
Susie Crippen  
Kathi Cypres  
Rosette Varda Delug  
Beth Rudin DeWoody  
George Freeman  
Bronya Galef  
Bob Gersh  
David Hoberman  
Linda Janger  
Barbara Kruger  
Phil Mercado  
Dori Peterman Mostov  
Erik Murkoff  
Andrew Nikou  
Susan Bay Nimoy  
Viveca Paulin-Ferrell  
Lari Pittman  
John Rubeli  
Ronnie Sassoon  
Chara Schreyer  
Joni Sighvatsson  
Barry Smooke  
Susan Steinhauser  
Bill True  
Jeremy Zimmer

Artist Council

Edgar Arceneaux  
Lisa Anne Auerbach  
Meg Cranston  
Andrea Fraser  
Charles Gaines  
Liz Glynn  
Fritz Haeg  
Glenn Kaino  
Gabriel Kuri  
Tala Madani  
Monica Majoli  
Yoshua Okón  
Laura Owens  
Yuval Sharon  
Mario Ybarra Jr.

**Director**  
Ann Philbin

\*Sits on Board of Overseers as well.