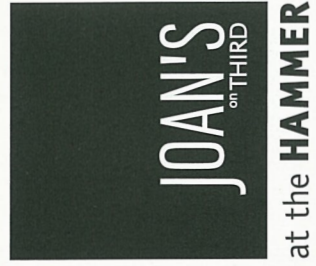


## Hammer Museum Fall 2005

Armand Hammer Museum of Art and Cultural Center, at UCLA  
10899 Wilshire Boulevard Los Angeles, California 90024 USA

For additional program information: Voice: 310-443-7000 TTY: 310-443-7094 Web: [www.hammer.ucla.edu](http://www.hammer.ucla.edu)

Non Profit  
US Postage  
**PAID**  
Los Angeles  
Permit 202



Now open in the Museum courtyard

Tuesday-Saturday 11am-7pm

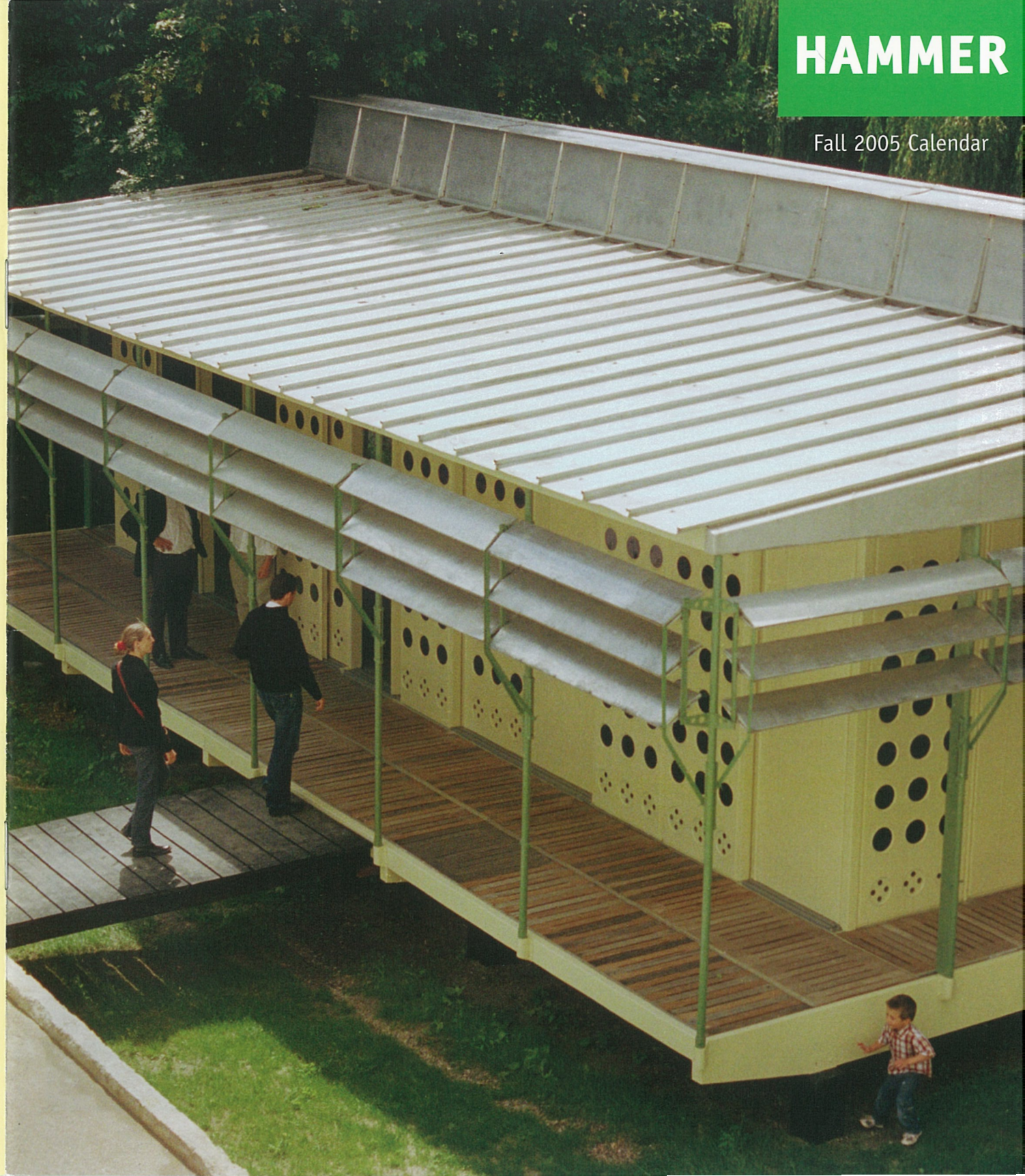
Sunday 11am-5pm

Cafe phone 310-443-7037

UCLA  
Arts



Cover: Jean Prouvé, Tropical House, Presles, France, 2004 (photo ©Mark Lyon, 2005).



# HAMMER

Fall 2005 Calendar



## A Message from the Director



We just concluded what must have been one of the most active summer program series in the Hammer Museum's history. Hundreds of visitors filled the courtyard several hot nights in a row during July and August to enjoy free outdoor rock and blues concerts, film screenings, and conversations. All of the events were standing room only, but, as always, Hammer Members benefited with priority seating. If you haven't done so already, I encourage you to sign up now to enjoy this great privilege of membership as the excitement continues into the fall with many more stellar events.

The fall season features several UCLA collaborations and more symposia than ever. A breathtaking lineup of reading, conversation, and lecture series includes such participants as theater maven Robert Wilson; artist Doug Aitken; poet W.S. Merwin; authors James Ellroy, Rick Moody, and Joan Silber; actors Alan Cumming and Dana Delany; and many other celebrated artists, authors, and scholars.

The lush Hammer courtyard is going to be home to a special installation of French architect and designer Jean Prouvé's Tropical House, a rarely seen prototype of prefab architecture originally designed for use in the tropical Congo. Be sure to stop by the Museum during installation and deinstallation periods, which provide an especially interesting opportunity to see this pioneer's ideas of industrialized architecture in

action. Accompanying this installation, the Hammer Museum is collaborating with *Dwell* magazine to present the scholarly symposium *Prefab Now*. Seating is limited, and advance registration is required for this weekend-long event. Please see page 5 for details.

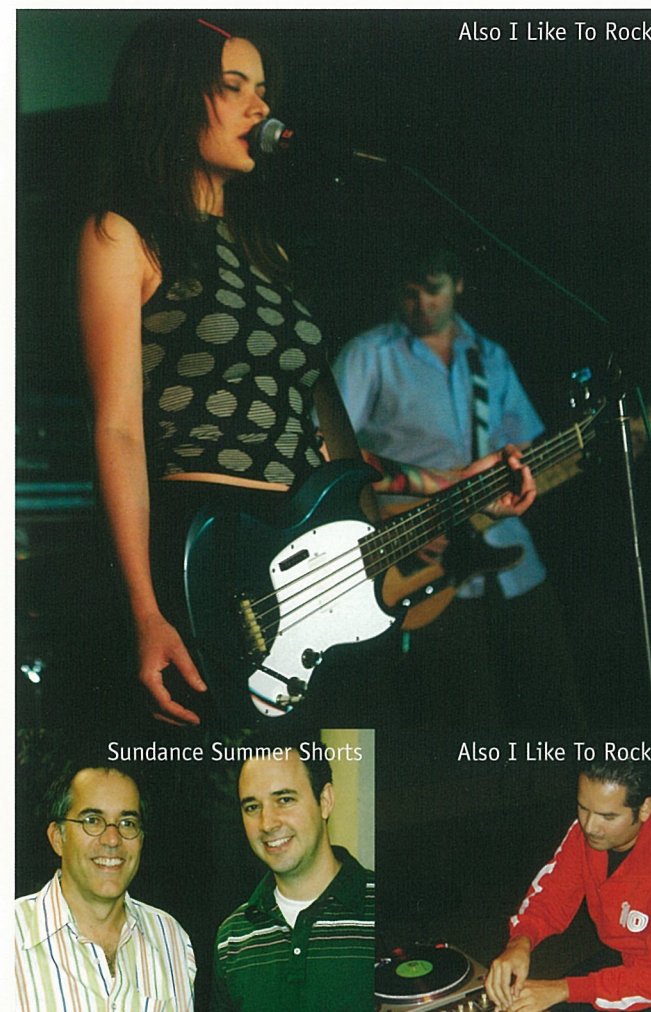
Following our two very successful, sold-out galas, we are proud to host the Hammer Museum's third annual *Gala in the Garden* honoring Los Angeles artist Ed Ruscha this October 1. Ruscha's installation for the Venice Biennale's U.S. pavilion this year was widely celebrated by international audiences. We are especially grateful to the gala co-chairs Edythe and Eli Broad, Sofia Coppola, and Gigi and Brian Grazer for their support of the Museum and this event in celebration of our friend Ed Ruscha.

Although our popular Free Hammer Summer is over, we count on seeing you many times this fall as well. I encourage you to enjoy a delicious meal from Joan's on Third at the Hammer adjacent to the architectural treat by Jean Prouvé in our courtyard.

Ann Philbin  
Director

Hammer Courtyard (photo: Elon Schoenholz)  
Above: Ann Philbin (photo: Alia)

## PUBLIC PROGRAMS AT THE HAMMER



Also I Like To Rock

Hammer Conversations

Sundance Summer Shorts



Hammer Conversations

Hammer Forum

Clockwise, from top left: Space Mtn (photo: Tony Steinberg); director Oliver Stone and *The Nation* editor David Corn (photo: Tod Kim); Sundance Summer Shorts audience; journalist Mona Eltahawy; author George Saunders and artist/filmmaker Miranda July; Sundance Institute director of programming John Cooper with producer/actor Matt Gund; Club Unicornio's Julio Cesar Morales.





## Jean Prouvé: A Tropical House

October – November 2005

Jean Prouvé is widely recognized for his pioneering use of industrial materials and new technologies. Prouvé designed the Tropical House in 1949 as a prototype for inexpensive, readily assembled housing for France's African colonies. Fabricated in Prouvé's French workshops, the house's components were completed in 1951 and flown disassembled to Africa in the cargo hold of an airplane. The house was erected in the town of Brazzaville, Congo, where it remained for nearly 50 years. In 1999, the Tropical House was disassembled and shipped back to France for restoration. The Hammer installation is only the second presentation of the Tropical House outside of France.

The exhibition was curated by historian Robert Rubin and originally presented at the Yale University School of Architecture. Installation of the house in the Hammer Museum's courtyard begins October 4 and deinstallation begins November 27, 2005. The installation and deinstallation periods each last for approximately two weeks and are integral aspects of the display.

*Jean Prouvé: A Tropical House* is made possible, in part, by Sotheby's and the Cultural Services of the French Consulate in Los Angeles.

### Related program

Conference and home tours

#### Prefab Now

October 28–30, 2005

Produced in collaboration with *Dwell* magazine and sponsored by Audi, *Prefab Now* presents distinguished experts in a three-day conference exploring the groundbreaking ideas, benefits, and difficulties of prefab architecture. For more information, see page 11.

Above, top to bottom: Jean Prouvé, Tropical House, shown during installation in Presles, France, 2004; Tropical House, interior (photos: © Mark Lyon, 2005).

### Related exhibitions

Small Space Gallery, Perloff Hall, UCLA

#### Jean Prouvé: Drawings and Photographs of A Tropical House

October 17 – December 9, 2005

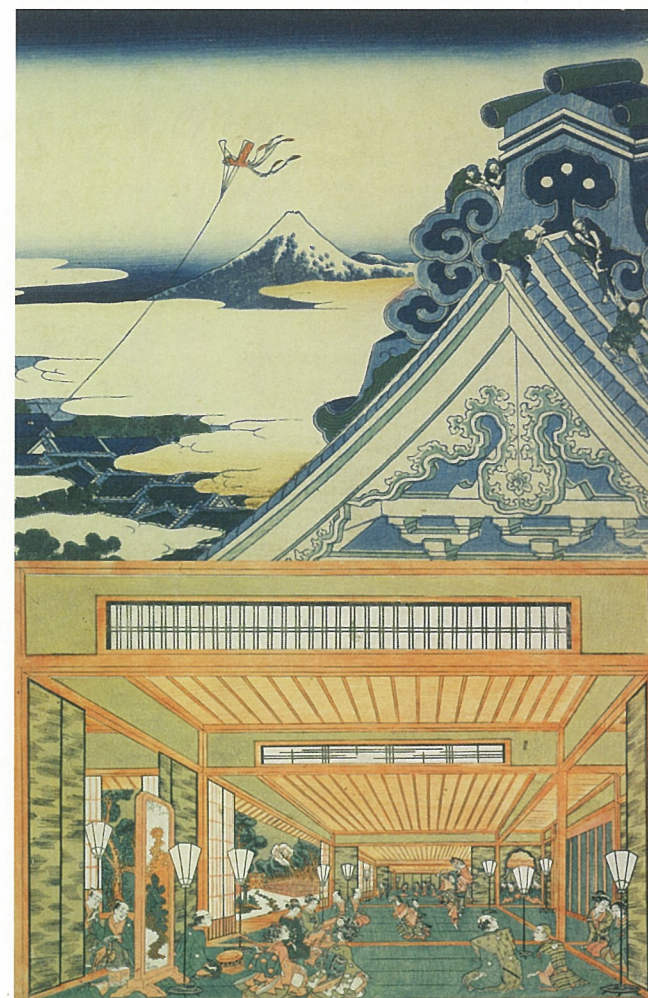
An exhibition exploring Prouvé's light-weight-metal building system for the Tropical House through drawings, photographs, and construction materials. Components of the Tropical House will be displayed in the Perloff Hall courtyard.

The Museum of Contemporary Art,  
Pacific Design Center

#### Jean Prouvé: Three Nomadic Structures

August 14 – November 27, 2005

An exhibition featuring furniture, architectural elements, and photographs relating to three prefabricated Prouvé buildings—the Glassmaking School in Croismare, France; the Tropical House in Brazzaville, Congo; and the Aluminum Centenary Pavilion in Villepinte, France.



## Frank Lloyd Wright and the Architecture of Japanese Prints

October 22, 2005 – January 22, 2006

This exhibition explores Frank Lloyd Wright's passion for Japanese woodblock prints, which he collected and sold throughout his career. While highlighting works by some of the most celebrated Japanese print artists from the 18th and 19th centuries, this exhibition also offers insight into this source of inspiration for Wright's architecture. Drawn primarily from the Grunwald Center for the Graphic Arts' Frank Lloyd Wright Japanese Print Collection, the exhibition also includes rare loans from the Norton Simon Museum, the Art Institute of Chicago, and the Getty Research Institute.

Part of the Los Angeles Architecture Festival, this exhibition was organized by Grunwald Center associate curator Carolyn Peter on the occasion of the Frank Lloyd Wright Building Conservancy's conference "Wright in Hollywood: Frank Lloyd Wright and His Los Angeles Progeny, 1917–1941."

Top to bottom: Katsushika Hokusai, *Mt. Fuji from Honganji Temple in Asakusa*, from the series *Thirty-six views of Mt. Fuji*, 1831–1833, detail. Color woodcut. Collection UCLA Grunwald Center for the Graphic Arts, Hammer Museum. Purchased from the Frank Lloyd Wright Collection; Utagawa Toyoharu, *Interior of Shoin Style Architecture with Dancers Performing Horse Dance*, c. 1770. Woodcut. Collection of the UCLA Grunwald Center for the Graphic Arts, Hammer Museum. Purchased from the Frank Lloyd Wright Collection.

### Related programs

Gallery Talk

#### Hollis Goodall

Sunday, October 30, 3pm

Associate curator of Japanese Art, Los Angeles County Museum of Art

Lecture

#### Harold Zellman

Thursday, January 19, 7pm

Architect and co-author of the book *The Fellowship*

#### UCLA Extension Class

Saturday, January 21, 9:30am–12:30pm

Carolyn Peter will teach a UCLA Extension class at the Hammer Museum on Frank Lloyd Wright and Japanese prints. To register, contact UCLA Extension at 310-825-9971 or 818-784-7006. Hammer Members receive a \$10 discount.

### Related exhibition

Norton Simon Museum

#### An Assortment of Beauties: Japanese Woodblock Prints Collected by Frank Lloyd Wright

July 29, 2005 – January 9, 2006

An exhibition of prints devoted to scenes and portraits of beautiful women, featuring work by many of Japan's leading artists in woodblock printmaking from the 17th and 18th centuries.



## HAMMER projects

The series of Hammer Projects reflects the Museum's ongoing commitment to contemporary art by providing local and international emerging artists the opportunity to create new work or to present existing work in a new context.

Hammer Projects are made possible with support from the Horace W. Goldsmith Foundation, The Annenberg Foundation, the Los Angeles County Arts Commission, and members of the Hammer Circle.

Phoebe Washburn's Hammer Project received additional support from Stavros Merjos and Honor Fraser, Sherry and Douglas Oliver, Susan A. and James N. Phillips, and Kay and Marc Richards.

### Phoebe Washburn

September 7, 2005 – February 12, 2006

Phoebe Washburn's monumental installations are composed of thousands of found, scavenged, and purchased pieces of cardboard or plywood cut into varying lengths and widths. Materials for her works are collected over time and built in a slow, seemingly organic process to resemble topological maps, urban landscapes, or fine layers of shells. Washburn's site-specific work, installed in the Hammer Museum's lobby, addresses environmental sustainability and notions of recycling, refuse, and landscape.

#### Gallery Talk

#### Phoebe Washburn

Saturday, September 10, 2pm

### Ryoko Aoki

September 14, 2005 – January 8, 2006

Ryoko Aoki's work explores the many possibilities of drawing. Using feathery pencil strokes, stippled felt pen marks, and sure-handed contour drawings, Aoki sketches a morphing world outside of everyday reality. Entire landscapes exist at the same scale as individual details, figures morph into objects, and disparate elements exist in perfect harmony. Her animated videos present these drawings as daydreams in motion. Delicate and hand-crafted, Aoki's works present a contemporary Japanese aesthetic different from the more familiar one represented most famously by Takashi Murakami.

Below, left to right: Phoebe Washburn, *Heavy Has Debt*, 2004. Mixed media. Installation at Faulconer Gallery, Grinnell College (photo: Daniel Strong); Ryoko Aoki, *Woods*, 2003, detail. Ink and felt-tip pen on paper. Courtesy Marc Foxx, Los Angeles, and Kodama Gallery, Osaka/Tokyo; Runa Islam, *Be The First To See What You See As You See It*, 2004. 16mm film with sound. 7 min. 30 sec. © the artist. Courtesy Jay Jopling/White Cube, London.

### Runa Islam

October 22, 2005 – January 22, 2006

*Be The First To See What You See As You See It*, 2004, a looped 16mm film, portrays a young woman walking through a gallery of fine china displayed on pedestals. After toying with the objects, the woman begins gently pushing dishes, cups, and saucers off their stands to smash on the floor. Filmed in slow motion and based in part on the first slow motion test film which showed a man shattering a jug of water, the piece is, in part, an attempt to capture the unrecordable moment of transformation as the objects break into pieces.



## HAMMER EXHIBITIONS



## The Biographical Landscape: The Photography of Stephen Shore, 1968–1993

Through October 16, 2005

*The Biographical Landscape* presents approximately 120 rarely exhibited color prints and photographic projects of one of the most influential American photographers of the 20th century. The exhibition comprises works from Stephen Shore's key series, *American Surfaces* and *Uncommon Places*, examples of his early conceptual projects, his later landscape photographs, and some of his most recent iPhoto books presenting the breadth of Shore's groundbreaking use of color photography.

*The Biographical Landscape: The Photography of Stephen Shore, 1968–1993* is curated by Stephan Schmidt-Wulffen. The Hammer Museum is its first U.S. venue following showings at Akademie der Bildenden Künste, Vienna, Austria, and Jeu de Paume, Paris, France.

Aperture Foundation, a not-for-profit organization devoted to photography and the visual arts, has organized this traveling exhibition and produced the accompanying publication.

Top to bottom: Stephen Shore, *Ginger Shore, Causeway Inn, Tampa, Florida*, November 17, 1977, 1977; *U.S. 10, Post Falls, Idaho*, August 25, 1974, 1974. C-prints. Courtesy of Aperture.

#### Discussion on Photography

#### Stephen Shore & Michael Fried, moderated by James Welling

Thursday, October 6, 7pm

A discussion on photography and its evolution as fine art, co-presented by the UCLA department of art.

Artist Stephen Shore is director of the photography program, the Susan Weber Soros professor of the arts, and chairman of the arts division at Bard College, New York. In 1971, he became the first living photographer to have a solo exhibition at the Metropolitan Museum of Art, New York, and his work has since been exhibited internationally. His many honors include two National Endowment for the Arts grants and an American Academy in Rome fellowship.

Critic Michael Fried is J.R. Herbert Boone professor of humanities and director of the Humanities Center at Johns Hopkins University. His recent books include *Art and Objecthood: Essays and Reviews* and *Menzel's Realism: Art and Embodiment in Nineteenth-Century Berlin*.

Professor of photography in UCLA's department of art, James Welling has exhibited extensively and is the recipient of grants from the National Endowment for the Arts and the New York Foundation for the Arts. He was awarded the 1999 DG Bank Forder Prize in photography.



## Patty Chang: Shangri-La

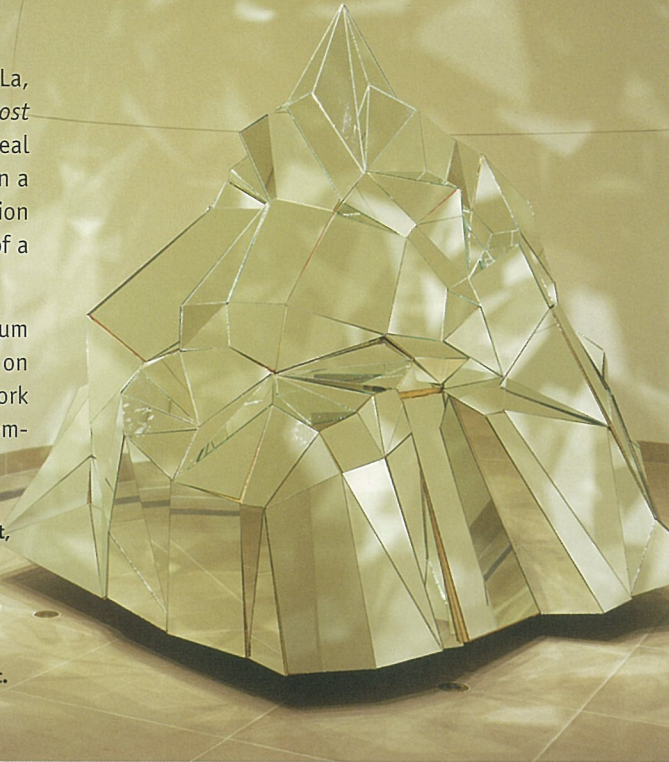
Through October 16, 2005

*Patty Chang: Shangri-La* examines the concept of Shangri-La, the mythical hamlet of James Hilton's 1933 novel, *Lost Horizon*. Chang's work explores the idea of making a real journey to an imaginary place. The installation centers on a video approximately 40 minutes in length, shot on location in Shangri-La. In the adjacent gallery, a large sculpture of a mirrored mountain is mounted on a rotating platform.

*Patty Chang: Shangri-La* is organized at the Hammer Museum by Russell Ferguson, chief curator. The exhibition is also on view at the New Museum of Contemporary Art, New York (through September 10, 2005), and the Museum of Contemporary Art, Chicago (May 20 – August 20, 2006).

*Patty Chang: Shangri-La* is part of the Three M Project—a series by the Hammer Museum, Los Angeles; the Museum of Contemporary Art, Chicago; and the New Museum of Contemporary Art, New York to commission, organize, and co-present new works of art. Generous support for the series has been provided by the Peter Norton Family Foundation and the American Center Foundation.

*Patty Chang: Shangri-La* also received support from Altria Group, Inc. and Susan and Leonard Nimoy.



Discussion on Ethno-tourism

Ali Behdad, Tina Mai Chen, Vernadette Gonzalez, Tim Oakes

Wednesday, September 28, 7pm

A discussion addressing the complicated relationship between tourism and culture through an examination of cultural identity, globalization, and the economic demands of tourism.

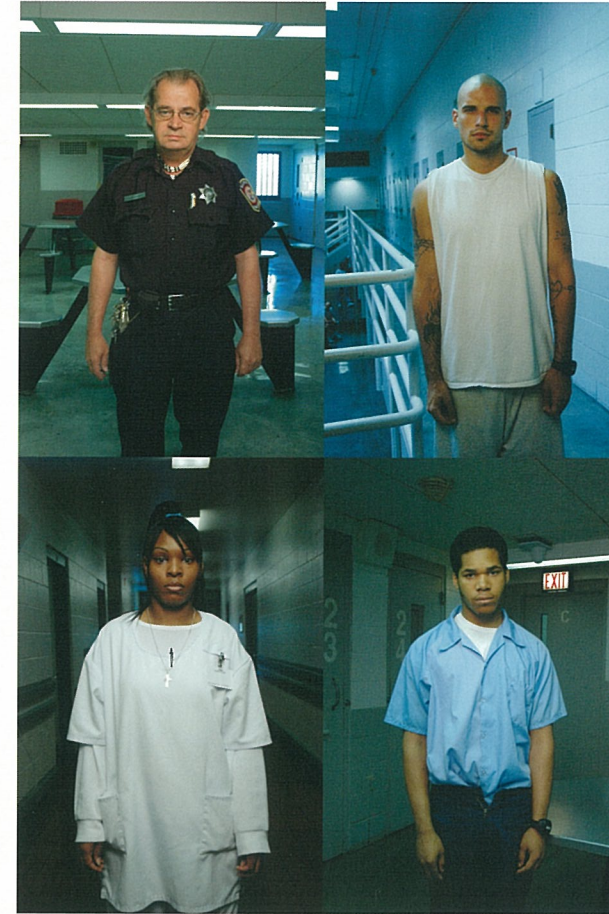
Ali Behdad is professor of English and comparative literature and chair of comparative literature at UCLA. He is the author of *Belated Travelers: Orientalism in the Age of Colonial Dissolution* and *A Forgetful Nation: On Immigration and Cultural Identity in the United States*.

Tina Mai Chen is assistant professor of history and the co-coordinator of the Interdisciplinary Research Circle on Globalization and Cosmopolitanism at the University of Manitoba, Winnipeg, Canada. Her current research includes a project titled "Eclectic Shadows and Everyday Enactments

of Internationalism: Soviet Film and the Making of Maoist China."

Vernadette Gonzalez is assistant professor of global studies at St. Lawrence University, Canton, New York, where she teaches on tourism, cultural studies, and race and feminist studies. Her writing is published in several journals and books, and she is currently at work on a book on tourism, empire, and militarism.

Tim Oakes teaches cultural geography at the University of Colorado at Boulder and serves as an adjunct professor of sociology at Guizhou Nationalities Institute in China. His publications include *Tourism and Modernity in China* and *Travels in Paradox: Remapping Tourism*.



Discussion on the Prison System

Sharon Dolovich & Judge Sol Wachtler

Thursday, September 22, 7pm

A discussion on correctional facilities in the U.S., the successes and shortcomings of rehabilitation, and Judge Wachtler's unique experiences as both a judge and a prisoner.

Professor Sharon Dolovich teaches criminal and prison law at the UCLA School of Law, where she has been on the faculty since 2000. Her recent articles include "Legitimate Punishment in Liberal Democracy" and the forthcoming "State Punishment and Private Prisons." She is also a contributor to the *Los Angeles Times*.

Currently a professor of constitutional law at Touro Law School, Judge Wachtler has served as a Justice of the New York State Supreme Court (1968–1972), Judge of the New

## Fiona Tan: Correction

Through October 16, 2005

*Fiona Tan: Correction* comprises approximately 300 video portraits of inmates and guards from four U.S. prisons projected on six hanging screens. Each 40-second portrait features an anonymous inmate or guard standing as still as possible in front of the camera. The work reveals Tan's interest in incorporating sociological and anthropological principles into the relationship between the still and moving image.

*Fiona Tan: Correction* is organized at the Museum of Contemporary Art, Chicago by Francesco Bonami, Manilow senior curator, with Julie Rodrigues Widholm, assistant curator.

*Fiona Tan: Correction* is part of the Three M Project—a series by the Museum of Contemporary Art, Chicago; Hammer Museum, Los Angeles; and the New Museum of Contemporary Art, New York to commission, organize, and co-present new works of art. Generous support for the series has been provided by the Peter Norton Family Foundation and the American Center Foundation.

*Fiona Tan: Correction* also received support from the Mondriaan Foundation, Amsterdam, and The Consulate General of The Netherlands in New York. The exhibition catalogue is supported in part by the Elizabeth Firestone Graham Foundation.

York State Court of Appeals (1972–1993), and was elected Chief Judge of the State of New York and the Court of Appeals in 1985. He authored *After the Madness: A Judge's Own Prison Memoir*, was a critic at large for *The New Yorker*, and is co-author of the recently released novel, *Blood Brothers*.

Above: Fiona Tan, *Correction*, 2004. Stills from the color video installation. Courtesy the artist and Frith Street Gallery, London.

Opposite: Patty Chang, *Shangri-La*, 2005, detail from installation at the Hammer Museum. Photo: Joshua White.



## HAMMER conversations



### Robert Wilson & Alan Cumming

Wednesday, November 9, 7pm

Robert Wilson has designed, written, and directed some of the most influential works of theater of the last 30 years. He received early acclaim for his productions *Einstein on the Beach* and *CIVIL warS*. His recent productions include the epic *I La Galigo*, which opened the 2005 Lincoln Center Festival in New York, Wagner's *Ring* cycle for the Zürich Opera in 2002, and the recent revival of the 1993 opera *Madame Butterfly* for the Los Angeles Opera. Wilson's drawings, paintings, and sculptures have been presented in many exhibitions around the world and he received the Golden Lion award for sculpture at the 1993 Venice Biennale.

Award-winning actor Alan Cumming has appeared in many films as well as stage productions in New York and London. He won a Tony for his performance in *Cabaret*, an Olivier for *Accidental Death of an Anarchist*, and two Independent Spirit Awards for *Anniversary Party*, which he directed and produced with Jennifer Jason Leigh. Cumming most recently appeared in *X-Men 2* and Showtime's *Reefer Madness*. He has just completed work on the animated feature *Ant Bully*, as well as the independent films *Neverwas*, *Eighteen*, and *Bam Bam and Celeste*, which was directed by Margaret Cho.

In-kind support provided by the W Hotel Los Angeles-Westwood and *LA Weekly*.

Above: Robert Wilson (photo: Leslie Spinks) & Alan Cumming

## HAMMER forum

### The Culture of Living and Dying

Panel Discussion with Barbara Combs Lee, David Kessler, Alan Toy, Reverend Frank Wulf

Tuesday, October 11, 7pm

A discussion addressing the pros and cons of the Death with Dignity Act and the parameters of end of life choices.

Barbara Combs Lee has enabled individual choice and empowerment within the U.S. healthcare system as a private attorney and counsel to the Oregon State Senate.

David Kessler is the director of palliative care for Citrus Valley Health Partners and Hospice, and is the author of the recent book *On Grief and Grieving*.

Alan Toy is the associate director at the UCLA Center for Neighborhood Knowledge, and is also a community organizer, a civil rights activist, and an actor in film and television.

Reverend Frank Wulf is an ordained United Methodist minister and will become the pastor of United University Church on the University of Southern California campus this fall.

### Is Inequality Bad for Our Health?

Lecture by Norman Daniels, PhD

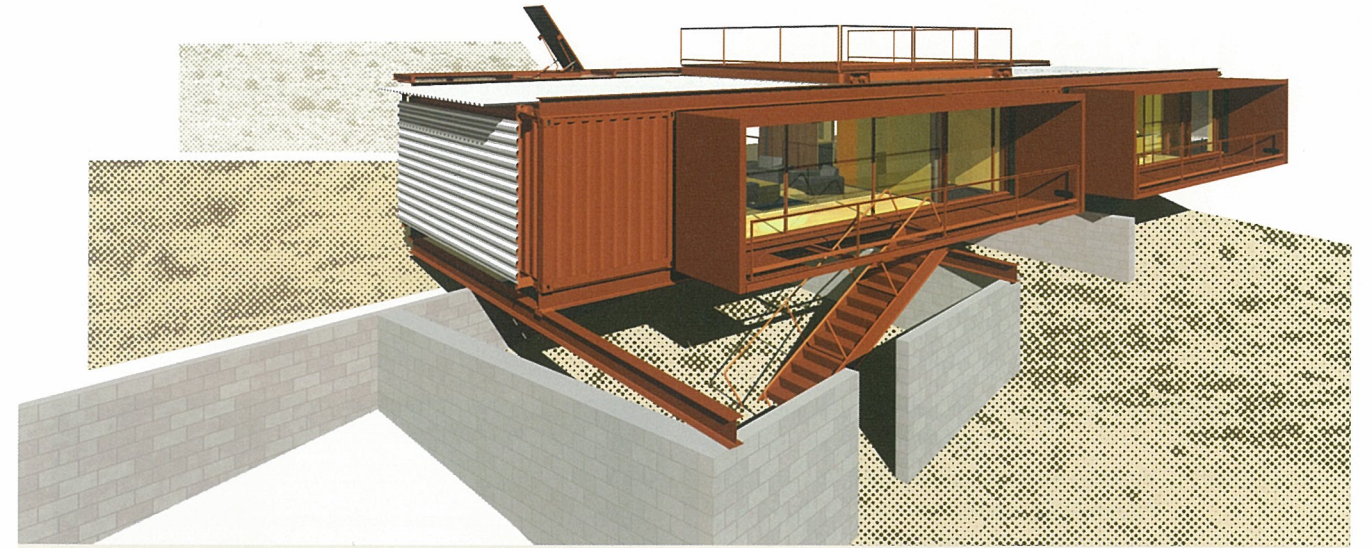
Wednesday, November 2, 7pm

When is an inequality in health access between different socioeconomic groups unjust? As access to affordable, reliable medical care in the U.S. becomes increasingly precious, noted medical ethicist Norman Daniels lectures on the impartiality and challenges of the health care system.

A renowned authority on public health in the U.S. and abroad, Norman Daniels is the Mary B. Saltonstall professor of ethics and population health at Harvard School of Public Health. Formerly Goldthwaite professor, chair of the Tufts University philosophy department, and professor of medical ethics at Tufts Medical School, Daniels has written widely on the philosophy of science and medical ethics.

Sponsored by the UCLA Healthcare Ethics Center in collaboration with the Hammer Museum.


## ARCHITECTURE CONFERENCE



## Prefab Now

October 28–30, 2005

Presented by *Dwell* and the Hammer Museum

Sponsored by  Audi

Produced in collaboration with *Dwell* magazine, *Prefab Now* presents distinguished experts in a three-day conference exploring the groundbreaking ideas, benefits, and difficulties of prefab architecture. The event includes an opening night reception, a full-day symposium with renowned speakers, and an exclusive tour of L.A.'s most noteworthy prefab homes.

Registration is limited.

\$395 before September 15

\$495 regular admission

To register, visit [www.dwellmag.com/prefab](http://www.dwellmag.com/prefab)

*Hammer Museum members at the Supporter level and above are eligible for a limited number of discounted tickets. Please call Hammer Membership at 310-443-7046 for more information.*

Above: Jones Partners Architecture, *Yucca Valley Pro/Con*, 2004. Prototype.

Friday, October 28

### Opening reception

Jean Prouvé: *A Tropical House* in the Hammer Museum Courtyard

Saturday, October 29

### Continental breakfast

### Presentations and panel discussions

Hammer Museum, Gallery 6

Program includes an introduction by Allison Arieff, editor-in-chief, *Dwell*, co-author of *Prefab*; Robert Rubin on Jean Prouvé's *Tropical House*; Alastair Gordon on the *Leisurama Homes*; Jay Baldwin on R. Buckminster Fuller; Michelle Kaufmann on the *Glidehouse* and *Sunset Breezehouse*; Charlie Lazor on the *Flatpak house*; Leo Marmol on desert prefab; Lloyd Alter on prefab manufacturing; Jennifer Siegal on mobile design; Wes Jones on shipping container architecture; and Joseph Tanney on the *Dwell House*.

Sunday, October 30

### Private tours of Southern California prefab homes

With complimentary shuttle service



Hammer Museum programs are FREE to the public.

Gallery talks are free with Museum admission.

Hammer Members receive priority seating at programs.

### SEPTEMBER

- 10 Sat 2pm Hammer Projects: Gallery Talk  
**Phoebe Washburn**
- 11 Sun 6pm Hammer Readings: New American Writing  
**Lan Samantha Chang**
- 14 Wed 7pm Hammer Readings: Some Favorite Writers  
**Lily Tuck**
- 18 Sun 6pm Hammer Readings: New American Writing  
**Jill Ciment & Amy Hempel**
- 22 Thu 7pm Discussion on the Prison System  
**Sharon Dolovich & Judge Sol Wachtler**
- 28 Wed 7pm Discussion on Ethno-tourism  
**Ali Behdad, Tina Mai Chen, Vernadette Gonzalez, Tim Oakes**



Doug Aitken, *starting point*, 2004. C-print mounted to aluminum with wooden frame, plexi cover. Courtesy of the artist and Regen Projects, Los Angeles.

### OCTOBER

- 4 Tue 7pm Hammer Readings: Some Favorite Writers  
**Joan Silber**
- 6 Thu 7pm Discussion on Photography  
**Stephen Shore & Michael Fried**, moderated by **James Welling**
- 9 Sun 6pm Hammer Readings: New American Writing  
**Rick Moody**

- 11 Tue 7pm Hammer Forum: *Culture of Living and Dying*  
**Barbara Combs Lee, David Kessler, Alan Toy, Reverend Frank Wulf**
- 13 Thu 7pm Hammer Lectures: UCLA Department of Art  
**Doug Aitken**
- 16 Sun 3pm Daumier: Gallery Talk  
**David Rodes**
- 16 Sun 6pm Hammer Readings: New American Writing  
**Robert Coover & Brian Evenson**

- 20 Thu 7pm Hammer Readings: *In a Lonely Place*  
**Dana Delany, James Ellroy, Bruce Wagner**
- 21 Fri 7pm Hammer Readings: Contemporary Poetry  
**W.S. Merwin**
- 27 Thu 7pm Hammer Lectures: UCLA Department of Art  
**Tammy Rae Carland**
- 28 Fri 9:30am UCLA Art History Symposium  
*On Collecting: Formation, Transmission, and Reception*
- 30 Sun 3pm *Frank Lloyd Wright and the Architecture of Japanese Prints*: Gallery Talk  
**Hollis Goodall**
- 30 Sun 6pm Hammer Readings: New American Writing  
**Mary Gaitskill**

### NOVEMBER

- 2 Wed 7pm Hammer Forum:  
*Is Inequality Bad for Our Health?*  
**Norman Daniels, PhD**
- 3 Thu 7pm Hammer Lectures: UCLA Department of Art  
**Judith Barry**
- 4 Fri 8pm Hammer Music:  
Music from Mediterranean Italy  
**Musicantica**

- 5 Sat 7pm Hammer Readings: Some Favorite Writers  
**Joan Didion**
- 9 Wed 7pm Hammer Conversations  
**Robert Wilson & Alan Cumming**
- 10 Thu 7pm Hammer Readings: Contemporary Poetry  
**Susan Wheeler**
- 13 Sun 6pm Hammer Readings: New American Writing  
**Geoff Dyer**
- 17 Thu 7pm Hammer Readings: Contemporary Poetry  
**Juliana Spahr & Geoffrey O'Brien**

### Free weekly talks and tours

Lunchtime Art Talks are held every Wednesday at 12:30pm. These brief, 15-minute discussions focus on single works of art on view at the Museum. For more details, see p. 20.

Join Hammer Docents for free tours of special exhibitions Tuesdays at 1pm and Thursdays at 1pm and 6pm.

### Prefab Now

Conference and home tours  
*October 28–30, 2005*

Advance registration is required; see page 11 for details.





Music from Mediterranean Italy

### Musicantica

Friday, November 4, 8pm

Using traditional Italian instruments, the duo Musicantica blends folk styles and oral traditions of southern Italy's working class with contemporary world music. Immigrants to southern California, Roberto Catalano and Enzo Fina have been performing their repertoire of traditional and original compositions since 1994.

This concert is a part of *Italian Los Angeles: Celebrating Italian Life, Local History, and the Arts in Southern California*, a multimedia festival from October through November 30, 2005, organized by the Italian Oral History Institute, as well as a part of *Speaking Memory: Oral History, Oral Culture, and Italians in America*, the 38th annual meeting of the American Italian Historical Association.

For more information on these events, visit [www.iohi.org](http://www.iohi.org)

(Photo: Carmen Garcia)



### In A Lonely Place

Dana Delany, James Ellroy, Bruce Wagner

Thursday, October 20, 7pm

A theatrical evening of readings co-presented as part of *Curating the City: Wilshire Boulevard*, a project of the Los Angeles Conservancy.

Dana Delany has starred in the Broadway production *A Life*, has won two Emmy Awards for her best actress role in the popular television series *China Beach*, and has received acclaim for many off-Broadway productions, television shows, and films, including *Thirtysomething*, *Pasadena*, *Light Sleeper*, *Tombstone*, and *The L Word*.

James Ellroy's L.A. quartet novels—*The Black Dahlia*, *The Big Nowhere*, *L.A. Confidential*, and *White Jazz*—were international bestsellers. His other acclaimed titles include *American Tabloid*, his memoir *My Dark Places*, and *The Cold Six Thousand*.

The novels that comprise Bruce Wagner's acclaimed *Cellular Trilogy*—*I'm Losing You*, *I'll Let You Go*, and *Still Holding*—have been among *The New York Times* notable books, and the *Los Angeles Times*' "Best of the Best Fiction." His most recent novel, *The Chrysanthemum Palace*, has been a *Los Angeles Times* number-one bestseller. He created *Wild Palms*, the groundbreaking dystopian television series set in L.A.

## Some Favorite Writers

A series of readings presented by the department of English and Mona Simpson, the author of *Anywhere But Here*, *The Lost Father*, *A Regular Guy*, and *Off Keck Road*. Major fiction writers read from their new work and then speak informally with Simpson and the audience about their lives and work. Sponsored by the UCLA department of English, Merle and Gerald Measer, and Astrid and Howard Preston.

In addition to Tuck, Silber, and Didion, the 2005–06 series of Some Favorite Writers continues with authors Allan Gurganus, Edward P. Jones, and Colm Toibin.

### Lily Tuck

Followed by a conversation with  
Michelle Huneven

Wednesday, September 14, 7pm

Lily Tuck won this year's National Book Award for her novel *The News From Paraguay*. She is also the author of *Siam or the Woman Who Shot a Man*, which was nominated for a PEN/Faulkner Award, and *Interviewing Matisse or the Woman Who Died Standing Up*. Her short fiction has appeared in *The New Yorker* and *The Paris Review*, and she is the winner of a National Magazine Award.

Michelle Huneven is the Whiting Prize-winning author of the novels *Round Rock* and *Jamesland*.

Simpson will join Tuck and Huneven in discussing their longstanding friendship as writers and its influence on their literary development.

### Joan Silber

Tuesday, October 4, 7pm

Joan Silber is the author of *Ideas of Heaven: A Ring of Stories*, which was nominated for the National Book Award this year, *Lucky Us*, *In My Other Life*, *In the City*, and *Household Words*, which was the winner of a PEN/Hemingway Award and which will be reissued this year. Her work has appeared in the *O. Henry Prize Stories 2003* and two volumes of *The Pushcart Prize*.

Silber will talk with Simpson about the element of time in writing fiction.

### Joan Didion

Saturday, November 5, 7pm

Co-presented with Dutton's Beverly Hills Books

Joan Didion has been a novelist, essayist, and screenwriter for more than three decades. She was recently honored with the Gold Medal for Belles Lettres from the American Academy of Arts and Letters among other major awards. She is a frequent contributor to *The New York Times Book Review* and *The New Yorker*. Her next book *The Year of Magical Thinking* is a memoir of grief and will be published in October.

Simpson joins Didion for a discussion of the personal essay, the nuances of fiction and nonfiction writing, and the ongoing hardship of keeping a keen eye on American culture.

Above left:  
Dana Delany  
James Ellroy (photo: Marion Ettlinger)  
Bruce Wagner (photo: Laura Peterson)  
Right:  
Lily Tuck (photo: Marion Ettlinger)  
Joan Silber (photo: Barry Goldstein)  
Joan Didion (photo: Brigitte Lacombe)





## New American Writing

Readings of contemporary fiction and poetry organized and hosted by Benjamin Weissman, author of two books of short fiction, most recently *Headless*, and professor of art and writing at Art Center College of Design and Otis College of Art. This series is made possible, in part, with support from Bronya and Andrew Galef.

### Lan Samantha Chang

Sunday, September 11, 6 pm

Lan Samantha Chang is the author of the award-winning *Inheritance: A Novel* and *Hunger*. She is the recipient of numerous awards and grants and will become the director of the University of Iowa Writers' Workshop in spring 2006.

### Jill Ciment & Amy Hempel

Sunday, September 18, 6pm

Jill Ciment is the author of the novels *The Law of Falling Bodies* and *Teeth of the Dog*, and the memoir *Half a Life*. "Astronomy," a short story included in her collection *Small Claims*, was made into a film for television's *American Playhouse*. She is the recipient of numerous grants.

Amy Hempel's collections of stories include *Tumble Home*, *At the Gates of the Animal Kingdom*, and *Reasons to Live*, and a new book forthcoming in 2005. She is currently a contributing editor to *Bomb* magazine and on the faculty at Bennington College, Vermont.

### Rick Moody

Sunday, October 9, 6pm

Rick Moody is the author of the novels *Garden State*, *Purple America*, and *The Ice Storm*, which later became a feature film; two collections of stories; and a memoir, *The Black Veil*. Among other awards, he received the Addison Metcalf Award and a Guggenheim Fellowship.

### Robert Coover & Brian Evenson

Sunday, October 16, 6pm

Robert Coover's works in fiction include *Pricksongs and Descants*, *The Public Burning*, and *The Origin of the Brunists*, which won the William Faulkner Award in 1966. He is the author of the influential essay on hypertext, "The End of Books," and currently teaches electronic and experimental writing at Brown University.

Brian Evenson is the author of *Altmann's Tongue* and *Dark Property: An Affliction*. He has received an O. Henry Prize, a National Endowment for the Arts fellowship, and a Glenna Luschei Prairie Schooner Award. He is an associate professor in the literary arts program at Brown University.

### Mary Gaitskill

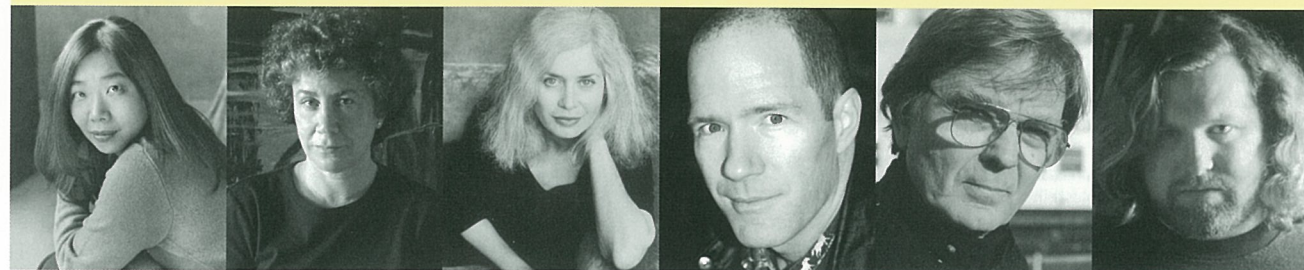
Sunday, October 30, 6pm

Mary Gaitskill is the author of the short story collections *Bad Behavior* and *Because They Wanted To*, the novel *Two Girls Fat and Thin*, and the forthcoming *Veronica*. She is a graduate of the University of Michigan.

### Geoff Dyer

Sunday, November 13, 6pm

Geoff Dyer has published many books of non-fiction and fiction, including *The Ways of Telling: The Work of John Berger*, *The Colour of Memory*, *Out of Sheer Rage: Wrestling with D. H. Lawrence*, and *The Search*. His latest books are *Yoga For People Who Can't Be Bothered To Do It* and *The Ongoing Moment*.



## Contemporary Poetry

Readings organized and hosted by Stephen Yenser, poet and professor at UCLA and author of *A Boundless Field: American Poetry at Large (Poets on Poetry)*.

### W.S. Merwin

Friday, October 21, 7pm

W.S. Merwin is the author of more than 15 books of poetry, including *The River Sound*, *The Rain in the Trees*, the Pulitzer Prize-winning *The Carrier of Ladders*, *The Lice*, and *A Mask for Janus*. He has also published nearly 20 books of translation, numerous plays, and four books of prose, including his memoir of life in the south of France, *The Lost Upland*. Merwin's many honors and fellowships include a Ford Foundation grant and the PEN Translation Prize. He is a former Chancellor of the Academy of American Poets and was one of three poetry consultants to the Library of Congress in 1999.

### Susan Wheeler

Thursday, November 10, 7pm

Susan Wheeler is the author of the novel *Record Palace* and four books of poetry, *Bag 'o' Diamonds*, *Smokes*, *Source Codes*, and *Ledger*. Her awards include the Witter Bynner Prize for Poetry from the American Academy of Arts & Letters, fellowships from the John Simon Guggenheim Foundation and the New York Foundation for the Arts, and others. Her work has appeared in many editions of *The Best American Poetry*, as well as in many journals. She has taught at several universities and is currently on the creative writing faculties at Princeton University and New School University.

### Juliana Spahr & Geoffrey O'Brien

Thursday, November 17, 7pm

Juliana Spahr is the author of *Response*, *Spiderwasp or Literary Criticism*, *Everybody's Autonomy*, and *Fuck You—Aloha—I Love You*. She is co-editor, with Jena Osman, of *Chain*, and teaches at the University of Hawai'i, Manoa.

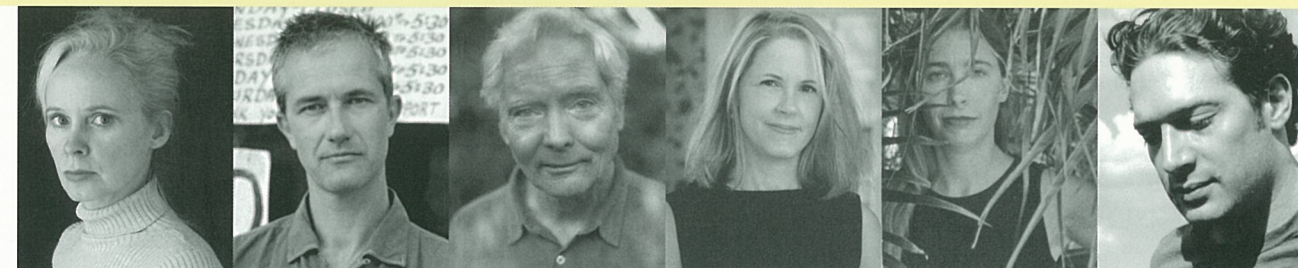
Geoffrey O'Brien's poetry, fiction, and criticism are widely published in periodicals. His books include *The Browser's Ecstasy: A Meditation on Reading*, *The Phantom Empire*, which was nominated for the 1993 National Book Critics Circle Award in Criticism, *Dream Time*, and *Hardboiled America*. His books of poetry are *Floating City: Selected Poems 1978–1995*, *The Hudson Mystery*, and *A Book of Maps*. He is editor-in-chief of *The Library of America*.

Opposite, left to right:

Lan Samantha Chang (photo: Marion Ettlinger)  
Jill Ciment (photo: Arnold Mesches)  
Amy Hempel (photo: Marion Ettlinger)  
Rick Moody (photo: Thatcher Keats)  
Robert Coover  
Brian Evenson

Below, left to right:

Mary Gaitskill (photo: © Joe Gaffney)  
Geoff Dyer (photo: Karen Gonzalez)  
W.S. Merwin (photo: Mark Hanauer)  
Susan Wheeler (photo: Jeffrey Goldman)  
Juliana Spahr (photo: Candance Ah Nee)  
Geoffrey O'Brien (photo: Jenny Alejandra Golden)







## UCLA Department of Art Lecture Series

Organized by artist Catherine Opie, professor in UCLA's department of art and recipient of the 2004 Larry Aldrich Award.

### Doug Aitken

Thursday, October 13, 7pm

Los Angeles-based artist Doug Aitken's video installations and photography narrate experiences of traveling and living within various cultures. A graduate of Art Center College of Design, Aitken has exhibited his work internationally, including exhibitions at La Caixa Forum, Barcelona, Spain; The Fabric Workshop and Museum, Philadelphia; Musée d'Art Moderne de la Ville de Paris, France; and the Museum of Contemporary Art, Chicago. Aitken received the 2000 Larry Aldrich Award and the international prize from the 1999 Venice Biennale.

### Tammy Rae Carland

Thursday, October 27, 7pm

Tammy Rae Carland is a photographer and video artist whose work has appeared in publications including *The Passionate Camera*, *A Girl's Guide to Taking Over the World*, and *Lesbian Art in America*. She is an associate professor in the photography department at California College of the Arts and the founder and director of the San Francisco-based label Mr. Lady Records and Videos, an independent distribution company dedicated to feminist and queer culture.

The UCLA department of art's visiting lecture series is made possible through the generous support of the William D. Feldman Family Endowed Art Lecture Fund.

Judith Barry's Art Council Lecture is made possible by the UCLA department of art and the generous support of the UCLA Art Council.

### Judith Barry

Thursday, November 3, 7pm

New York-based artist Judith Barry's work crosses many disciplines and has been exhibited internationally at biennials in Venice, São Paulo, Nagoya, Cairo, Australia, and the U.S., among others. In 2000, she won the Friedrich Kiesler Prize for Architecture and the Arts and was awarded best pavilion at the 8th annual Cairo Biennial. She is currently working on a book about art and technology, several installation projects, and a web-based work.

Clockwise, from top left: Judith Barry, *Model for Stage and Screen*, 1987, inside view. Inhabitable light fog chamber and anti-chamber, dimensions variable. Courtesy of the artist and Rosamund Felsen Gallery. Doug Aitken, *fleeting field*, 2005 C-print mounted to aluminum with wooden frame, plexi cover. Courtesy of the artist and Regen Projects, Los Angeles Tammy Rae Carland, *Pirate Platform, Sacha's* (from the series *Outpost*), 2005. Color photograph. Courtesy of the artist.

As one of the country's foremost university art museums, the Hammer Museum is an important resource for UCLA students and professors. The Museum collaborates with many university departments to present interdisciplinary programs and offers a range of opportunities that encourage student involvement.

### Student Advisory Committee

This committee was created in 2004 to promote greater student participation at the Museum and to increase the Museum's visibility on the UCLA campus. Committee members attend regular meetings, volunteer at public programs, and plan unique student events in conjunction with exhibitions, such as the highly successful "It's a Student THING," organized in conjunction with *THING: New Sculpture from Los Angeles*.

### Undergraduate Student Docent Program

Each year, the Museum selects UCLA undergraduate students to serve as Museum docents. After completing a training program, docents prepare and lead tours of the permanent collections and special exhibitions for visitors and groups.

### Undergraduate Internship Program

In collaboration with the department of art history, the Museum offers internships to selected UCLA undergraduates who have completed the department's museum studies course. Interns work with a mentor in a specified area of interest, are introduced to various aspects of the Museum, and assist with projects and programs.

For further information about these and other programs, please email John Alan Farmer, head of academic initiatives, at [johnfarmer@arts.ucla.edu](mailto:johnfarmer@arts.ucla.edu) or call 310-443-7055.



### On Collecting: Formation, Transmission, and Reception

The 40th Annual UCLA Art History Graduate Student Symposium

Friday, October 28, 2005, 9:30am–5pm

Keynote lecture by Malcolm Baker

This year's symposium examines collecting as a central avenue of discourse in the study of material culture. The symposium features presentations by graduate students in various disciplines. The keynote speaker is Malcolm Baker, professor of 18th-century art and the history of collecting, and director of the USC-Getty program in the history of collecting and display.

The UCLA Art History Graduate Student Symposium is the longest-running art history student symposium in the United States. Organized by the UCLA Art History Graduate Student Association, the symposium brings together emerging scholars to share their research on any aspect of the visual arts relevant to a selected theme.

For more information, please email [ahsympos@humnet.ucla.edu](mailto:ahsympos@humnet.ucla.edu).

Left: Artist Kaz Oshiro gives a talk at "It's a Student THING."



## Lunchtime Art Talks

Wednesdays at 12:30pm

Join Hammer curators each week for brief, insightful, 15-minute discussions about works of art on view at the Museum.



September 7  
Phoebe Washburn,  
*Hammer Project*, 2005



September 14  
Rembrandt van Rijn,  
*Juno*, c. 1662–65



September 21  
Jacques Bellange,  
*Martyrdom of St. Lucy*, 1612–17



September 28  
Stephen Shore,  
*Firewood Tree*, 2004



October 5  
Ryoko Aoki,  
*Hammer Project*, 2005



October 12  
Henri de Toulouse-Lautrec,  
*Touc, Seated on a Table*,  
1879–81



October 19  
Jean Prouvé,  
*Tropical House*, 1951



October 26  
Utagawa Toyoharo, *Interior  
of Shoin Style Architecture  
with Dancers Performing  
Horse Dance*, c. 1770



November 2  
Rudolf von Alt,  
*View of Siena*, 1871



November 9  
Jean Prouvé,  
*Tropical House*, 1951



November 16  
Ernst Ludwig Kirchner,  
*Stadtbahnbogen*, 1915–19

## HAMMER COLLECTIONS



### The Armand Hammer Daumier and Contemporaries Collection

#### Robert Macaire: A Chameleon and a Critic Through November 27, 2005

The exhibition celebrates Honoré Daumier's most popular fictional character, Robert Macaire, a smooth-talking conman who appeared in over 140 of Daumier's caricatures in the 1830s and '40s. Considered a precursor to the modern-day comic strip, each scenario presents Macaire and his sidekick Bertrand taking on a different role in order to confuse their victims, to criticize French society, and to amuse the reader.

#### Gallery Talk

##### David Rodes

Sunday, October 16, 3pm

Professor of English at UCLA and director emeritus of the Grunwald Center for the Graphic Arts

Above: Honoré Daumier, —Robert Macaire—I don't know what they find so funny about all this foolishness..., 1837. Hand colored lithograph from the series *Caricaturana*. The Armand Hammer Daumier and Contemporaries Collection (photo: Robert Wedemeyer).



### The Armand Hammer Collection

A selection of paintings and works on paper from the Armand Hammer Collection is permanently on view. It consists primarily of works by French nineteenth-century masters and provides an overview of the major artistic movements of that period. A small but wide-ranging group of European old master paintings as well as work by American artists from the eighteenth to twentieth century are also represented. Included are important examples of work by Mary Cassatt, Claude Monet, Camille Pissarro, Rembrandt van Rijn, John Singer Sargent, and Vincent van Gogh.

### UCLA Grunwald Center for the Graphic Arts

With an extensive collection of over 45,000 works on paper, the Grunwald Center is a major teaching and research resource for UCLA students, faculty, and the public. It includes prints, drawings, photographs, and artists' books dating from the Renaissance to the present, representing a diverse selection of artists such as Albrecht Dürer, Ishikawa Toyonobu, Paul Cézanne, Egon Schiele, Henri Matisse, Jasper Johns, Käthe Kollwitz, June Wayne, Pablo Picasso, Richard Serra, Lorna Simpson, Kiki Smith, and Carlos Almaraz.

The Center is open by advance appointment only. Please call 310-443-7078.

Above: Henri Fantin-Latour, *Portrait of Mrs. Edith Crowe*, 1874. Oil on canvas. The Armand Hammer Collection, gift of the Armand Hammer Foundation (photo: Robert Wedemeyer).



## HAMMER MEMBERSHIP

### Member's Opening Reception

There are many benefits to being a Hammer Museum member, including a full year of invitations to the Museum's popular opening parties. When you upgrade your membership to the Supporter (\$300) level, you also receive special invitations to the private director's reception with exhibition artists and curators. The current summer exhibitions were celebrated in the company of artists Stephen Shore, Patty Chang, Fiona Tan, and many museum colleagues and other special guests. For more information or to become a member, please email [hammermembership@arts.ucla.edu](mailto:hammermembership@arts.ucla.edu) or call 310-443-7050.

Below, clockwise from top left: Billie Milam-Weisman, Eileen Harris Norton, Ann Philbin, Tim Kittleston, and Michael Donaldson; Kris Kuramitsu, Roxana Landaverde, Charles Gaines, and Lauri Firstenberg; Weston Naef, Ellen Harris, and Stephen Shore; Fiona Tan and Ivo van Stiphout.



Don't miss the Hammer Museum's third annual

**GALA in the GARDEN** honoring Ed Ruscha  
Saturday, October 1, 2005

Co-chaired by Edythe and Eli Broad, Sofia Coppola, and Gigi and Brian Grazer

The elegant dinner is held in the Museum Courtyard, featuring cuisine by chef Suzanne Goin of LUCQUES. All proceeds benefit the Hammer Museum's exhibitions and public programs. Tickets are limited.

For information and table sales, please contact Addy Benard at [hammergala@arts.ucla.edu](mailto:hammergala@arts.ucla.edu) or 310-443-7012.

## UPCOMING EXHIBITIONS



Coming to the Hammer and MOCA this November:

### MASTERS of American Comics

November 20, 2005 – March 12, 2006

The Hammer Museum and The Museum of Contemporary Art (MOCA) jointly present *MASTERS of American Comics*, a large-scale exhibition of work by 15 artists who shaped the development of the American comic strip and comic book during the past century. On view simultaneously at both museums, the exhibition includes over 500 original drawings, proofs, printed Sunday pages, and comic books to provide insight into the medium of comics as an art form. Featured are works by Winsor McCay, Lyonel Feininger, George Herriman, E.C. Segar, Frank King, Chester Gould, Milton Caniff, Charles M. Schulz, Will Eisner, Jack Kirby, Harvey Kurtzman, R. Crumb, Art Spiegelman, Gary Panter, and Chris Ware.

Join the Hammer Museum now and be sure to receive your invitation to the *MASTERS* opening reception. During the run of this exhibition Hammer members will enjoy the added benefit of free admission to MOCA and a discount at the MOCA Store.

*MASTERS of American Comics* is co-curated by independent scholars John Carlin and Brian Walker, and is coordinated by MOCA assistant curator Michael Darling and Hammer Museum deputy director of collections and director of the Grunwald Center Cynthia Burlingham.

*MASTERS of American Comics* is jointly organized by the Hammer Museum, Los Angeles and The Museum of Contemporary Art, Los Angeles. The exhibition is made possible, in part, by the National Endowment for the Arts.



### A Letter from Japan: The Photographs of John Swope

March 5 – June 4, 2006

This exhibition of over 100 photographs presents a previously little-known body of work by the Los Angeles photographer John Swope (1908–1979). As one of the first American photographers to arrive in Japan at the end of World War II, he created a remarkable photographic essay in which he sensitively explored the effects of war. To put this series in context, the exhibition also features works from other parts of his career including images from Hollywood in the 1930s and photographs he contributed to *Life* magazine.

This exhibition is generously supported by Gail and Jerry Oppenheimer with additional support from Mrs. Sidney F. Brody, The Judith Rothschild Foundation, Shirlee Fonda, and Jane Wyatt.

### The Société Anonyme: Modernism for America

April 23 – August 13, 2006

Featuring approximately 200 paintings, sculptures, and works on paper from the Société Anonyme Collection at Yale University Art Gallery, this exhibition charts the establishment of one of the greatest collections of modernist works in America. Included are renowned artists such as Josef Albers, Alexander Calder, Max Ernst, Paul Gauguin, Fernand Léger, Henri Matisse, Pablo Picasso, Man Ray, Kurt Schwitters, and many others.

*The Société Anonyme: Modernism for America* is organized by Yale University Art Gallery. The Hammer Museum's presentation is made possible, in part, by The Broad Art Foundation.

Above: John Swope, *Arai, woman pushing child in carriage*, September 5, 1945. Gelatin silver print. John Swope Collection. © John Swope Trust. Opposite: Milton Caniff, *Steve Canyon*, January 26, 1947, detail. Newspaper Sunday page. Reproduced with permission of the Milton Caniff Estate.

## MUSEUM INFORMATION

### Hours

Tue, Wed, Fri, Sat 11am–7pm,  
Thu 11am–9pm, Sun 11am–5pm  
Closed Mondays, July 4, Thanksgiving,  
Christmas, and New Year's Day.  
The Grunwald Center Study Room is  
open by appointment only, Monday  
through Friday from 10am to 4pm.  
Please call 310-443-7078 to  
schedule a visit.



### Admission

\$5 Adults  
\$3 Seniors (65+) and UCLA Alumni  
Association Members with ID  
**Free** for Museum members, students  
with ID, UCLA faculty and staff,  
and visitors 17 and under  
**Free** every Thursday for all visitors

### Parking

Convenient parking is available  
under the museum for \$3 with  
validation. Enter on Westwood  
Boulevard or Glendon Avenue.  
Parking for people with disabilities  
is provided on levels P1 and P3.

The Armand Hammer Museum of Art and Cultural Center is operated by the University of California, Los Angeles. Occidental Petroleum Corporation has partially endowed the Museum and constructed the Occidental Petroleum Cultural Center Building, which houses the Museum.

### Board of Directors

**Chairman**  
Sen. John V. Tunney

**Vice President**  
Richard Green

**Treasurer**  
Anthony R. Leach

Roy H. Aaron  
Albert Carnesale  
Lloyd E. Cotsen  
Samuel P. Dominick  
Frank O. Gehry  
Richard W. Hallock  
Michael A. Hammer  
Werner H. Kramarsky  
Joseph Mandel  
Eileen Harris Norton  
Lee Ramer  
Nelson Rising  
Andrea Van de Kamp  
Christopher A. Waterman

### Board of Overseers

Peter Benedek  
Lloyd E. Cotsen  
Rosette Delug  
Bronya Galef  
Harriett Gold  
Murray Gribin  
Stanley Hollander  
Linda Janger  
Werner H. Kramarsky  
Harvey S. Shipley Miller  
Eileen Harris Norton  
Catherine Opie  
Lee Ramer  
Phil A. Robinson  
Michael Rubel  
David Teiger  
James Welling  
Jeremy Zimmer