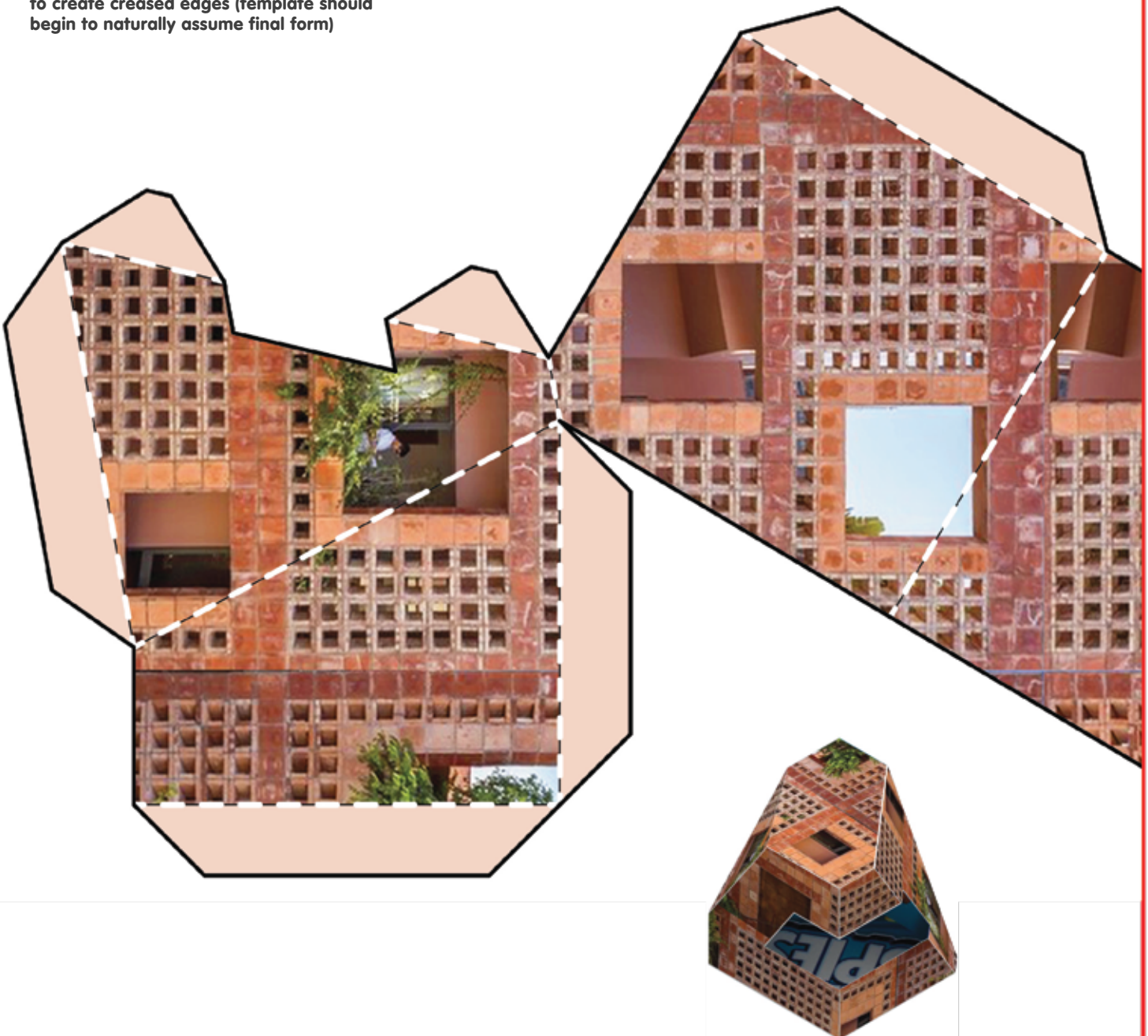
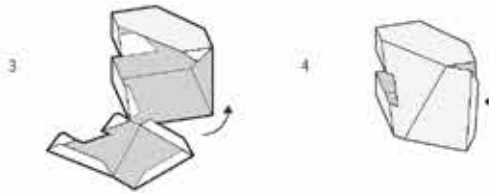
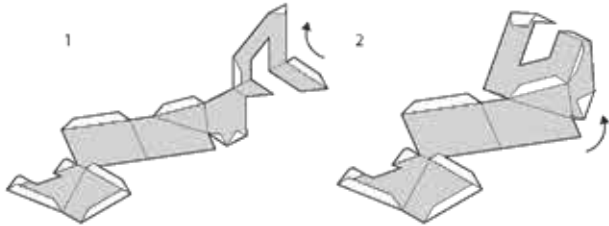


ReMake 3

Georgina Huljich & Marcelo Spina

1. Choose and print desired template
2. Open the top, bottom and one side of of the cereal box to create a flat surface
3. Cut along the solid red line of sheet 1 and align cut edge with dashed red line of sheet 2
4. Tape sheets together within the white space both above and below the image
5. Glue taped template to cardboard face of flattened cereal box with image facing up
6. Carefully cut out the template that has been glued on to the box along solid black line
7. Flip the template over
8. Fold template inward along the dashed lines to create creased edges (template should begin to naturally assume final form)
9. Glue and attach the tabs to their respective sides; hold 20-30 seconds until glue is stable
10. Repeat steps 1-9 with alternate templates to create multiple shapes and textures
11. Use the finished objects to create a composition. Stack them, put them side by side, etc. Look for unique settings and backdrops to give objects new context
12. Lastly, share your project on social media!
@hammer_museum #hammerKAMP

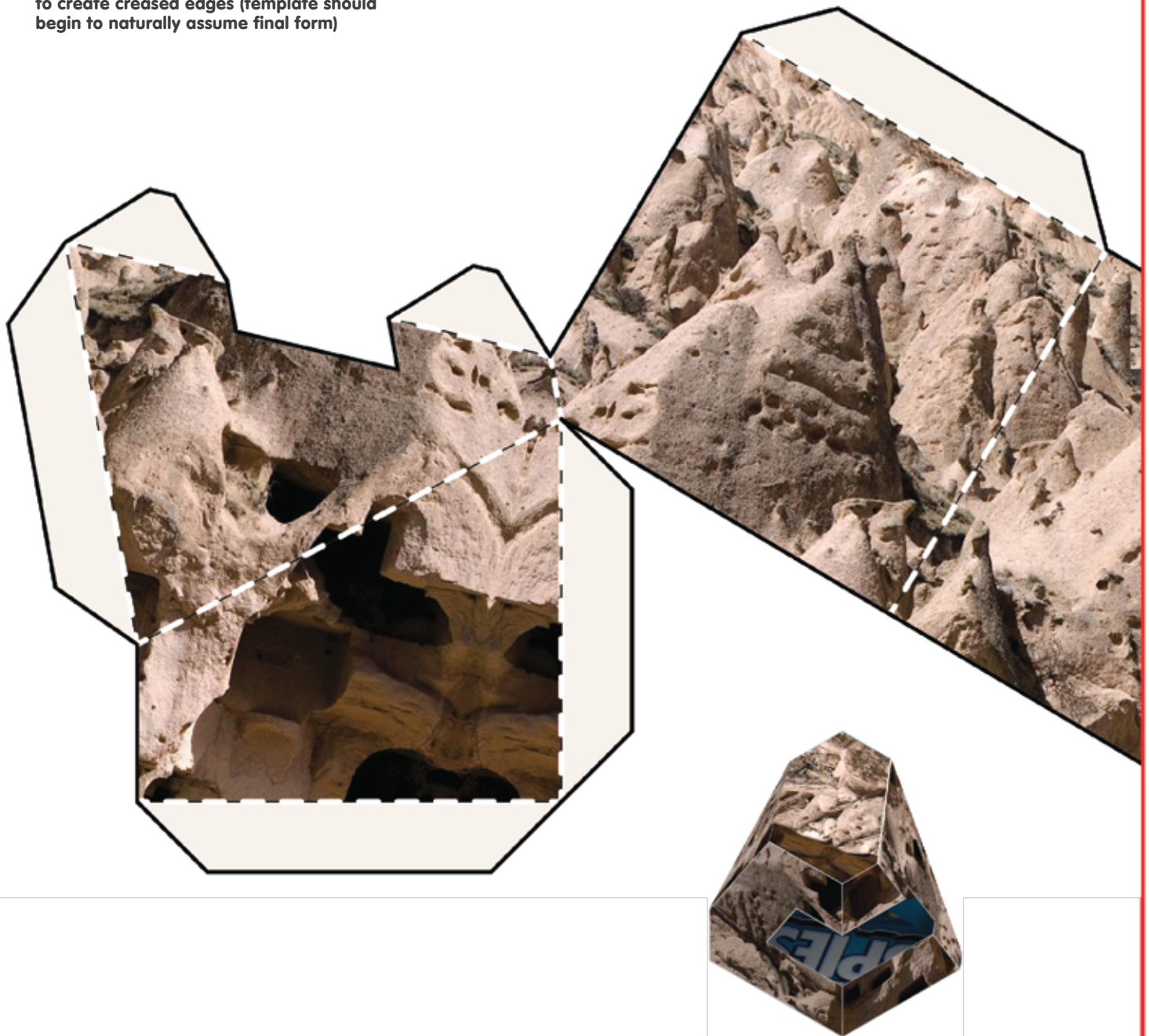


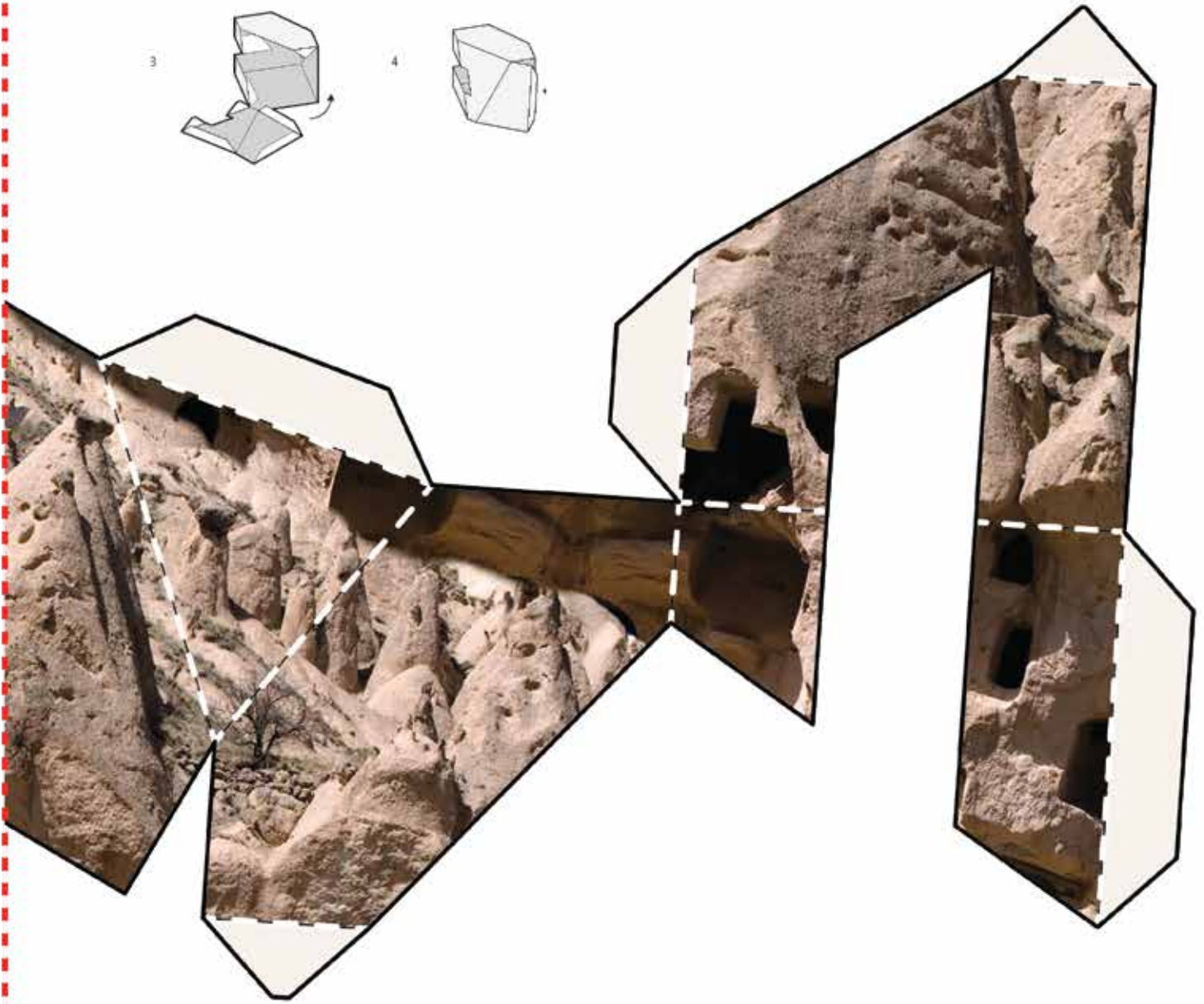
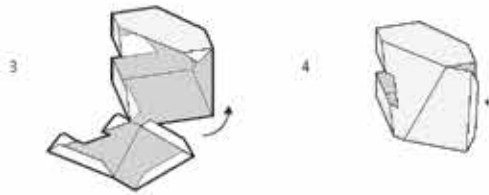
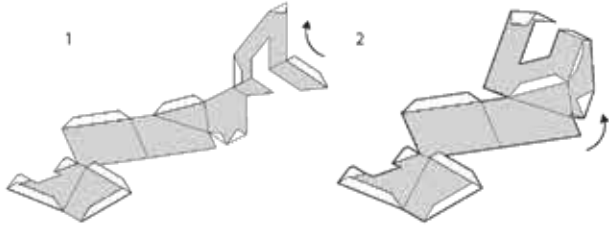


ReMake 3

Georgina Huljich & Marcelo Spina

1. Choose and print desired template
2. Open the top, bottom and one side of of the cereal box to create a flat surface
3. Cut along the solid red line of sheet 1 and align cut edge with dashed red line of sheet 2
4. Tape sheets together within the white space both above and below the image
5. Glue taped template to cardboard face of flattened cereal box with image facing up
6. Carefully cut out the template that has been glued on to the box along solid black line
7. Flip the template over
8. Fold template inward along the dashed lines to create creased edges (template should begin to naturally assume final form)
9. Glue and attach the tabs to their respective sides; hold 20-30 seconds until glue is stable
10. Repeat steps 1-9 with alternate templates to create multiple shapes and textures
11. Use the finished objects to create a composition. Stack them, put them side by side, etc. Look for unique settings and backdrops to give objects new context
12. Lastly, share your project on social media!
@hammer_museum #hammerKAMP

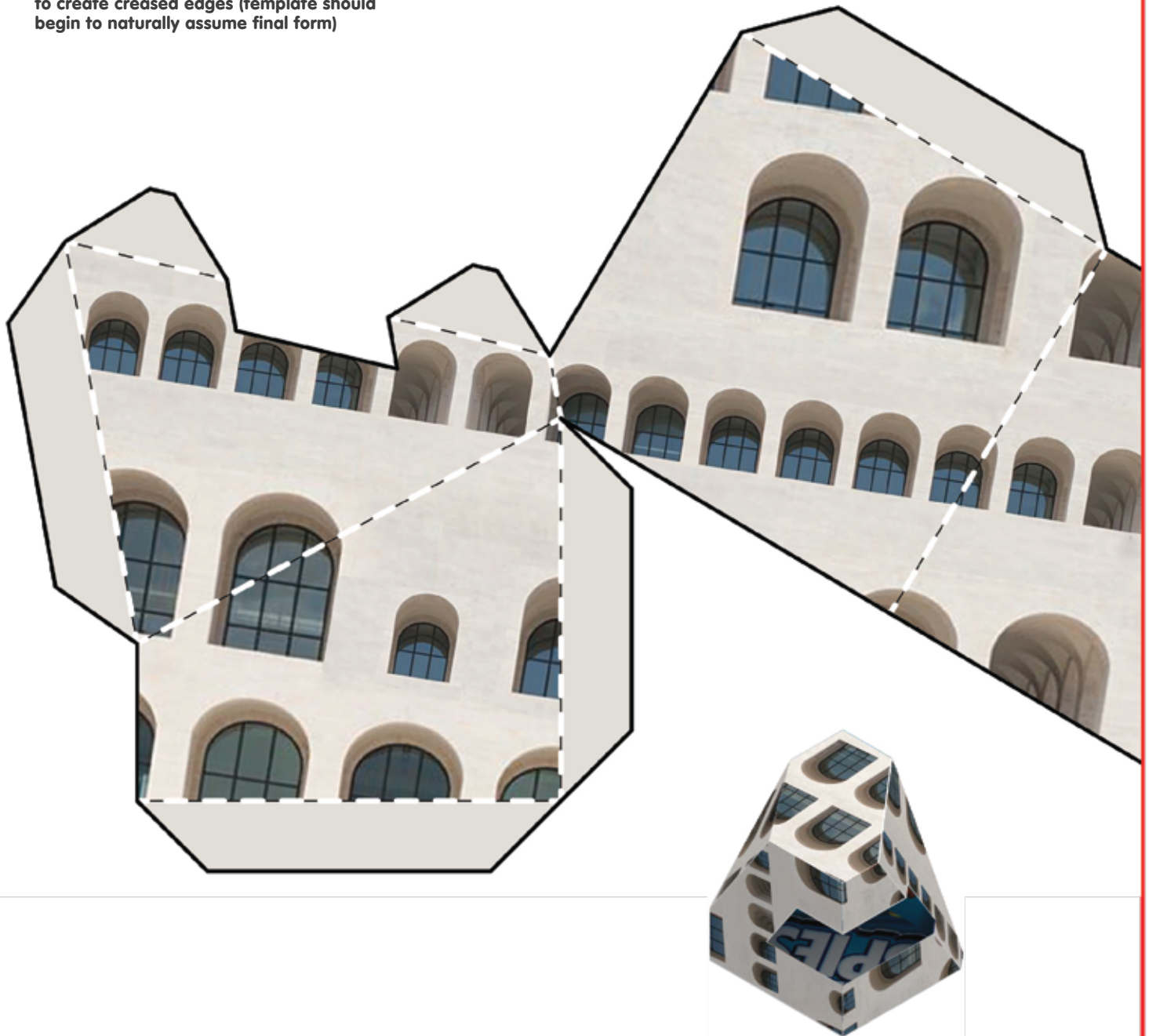


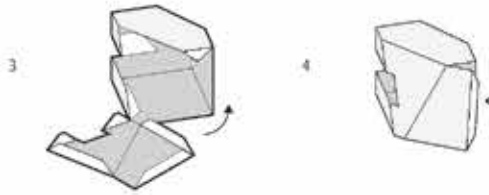
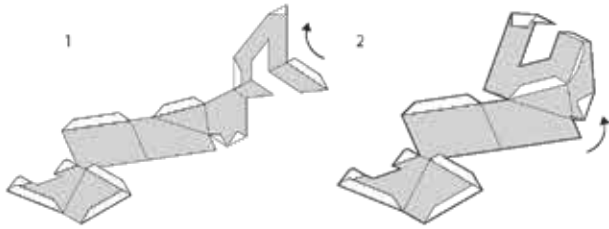


ReMake 3

Georgina Huljich & Marcelo Spina

1. Choose and print desired template
2. Open the top, bottom and one side of of the cereal box to create a flat surface
3. Cut along the solid red line of sheet 1 and align cut edge with dashed red line of sheet 2
4. Tape sheets together within the white space both above and below the image
5. Glue taped template to cardboard face of flattened cereal box with image facing up
6. Carefully cut out the template that has been glued on to the box along solid black line
7. Flip the template over
8. Fold template inward along the dashed lines to create creased edges (template should begin to naturally assume final form)
9. Glue and attach the tabs to their respective sides; hold 20-30 seconds until glue is stable
10. Repeat steps 1-9 with alternate templates to create multiple shapes and textures
11. Use the finished objects to create a composition. Stack them, put them side by side, etc. Look for unique settings and backdrops to give objects new context
12. Lastly, share your project on social media!
@hammer_museum #hammerKAMP



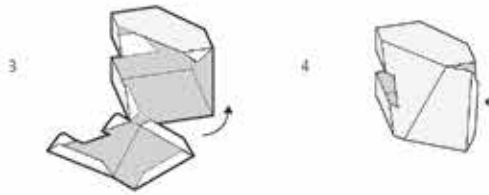
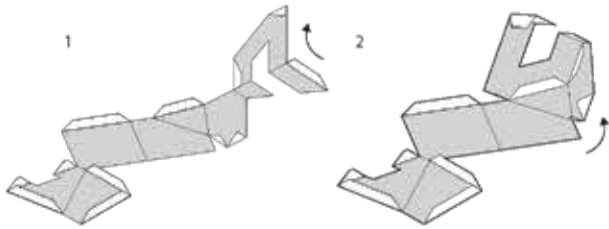


ReMake 3

Georgina Huljich & Marcelo Spina

1. Choose and print desired template
2. Open the top, bottom and one side of of the cereal box to create a flat surface
3. Cut along the solid red line of sheet 1 and align cut edge with dashed red line of sheet 2
4. Tape sheets together within the white space both above and below the image
5. Glue taped template to cardboard face of flattened cereal box with image facing up
6. Carefully cut out the template that has been glued on to the box along solid black line
7. Flip the template over
8. Fold template inward along the dashed lines to create creased edges (template should begin to naturally assume final form)
9. Glue and attach the tabs to their respective sides; hold 20-30 seconds until glue is stable
10. Repeat steps 1-9 with alternate templates to create multiple shapes and textures
11. Use the finished objects to create a composition. Stack them, put them side by side, etc. Look for unique settings and backdrops to give objects new context
12. Lastly, share your project on social media!
@hammer_museum #hammerKAMP



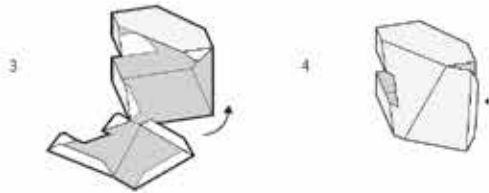
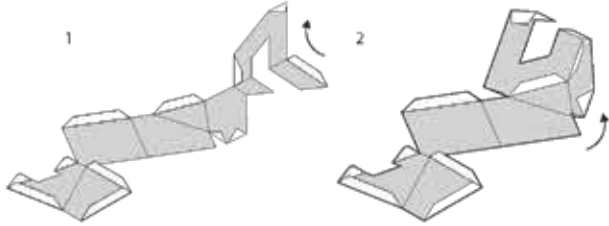


ReMake 3

Georgina Huljich & Marcelo Spina

1. Choose and print desired template
2. Open the top, bottom and one side of of the cereal box to create a flat surface
3. Cut along the solid red line of sheet 1 and align cut edge with dashed red line of sheet 2
4. Tape sheets together within the white space both above and below the image
5. Glue taped template to cardboard face of flattened cereal box with image facing up
6. Carefully cut out the template that has been glued on to the box along solid black line
7. Flip the template over
8. Fold template inward along the dashed lines to create creased edges (template should begin to naturally assume final form)
9. Glue and attach the tabs to their respective sides; hold 20-30 seconds until glue is stable
10. Repeat steps 1-9 with alternate templates to create multiple shapes and textures
11. Use the finished objects to create a composition. Stack them, put them side by side, etc. Look for unique settings and backdrops to give objects new context
12. Lastly, share your project on social media!
@hammer_museum #hammerKAMP

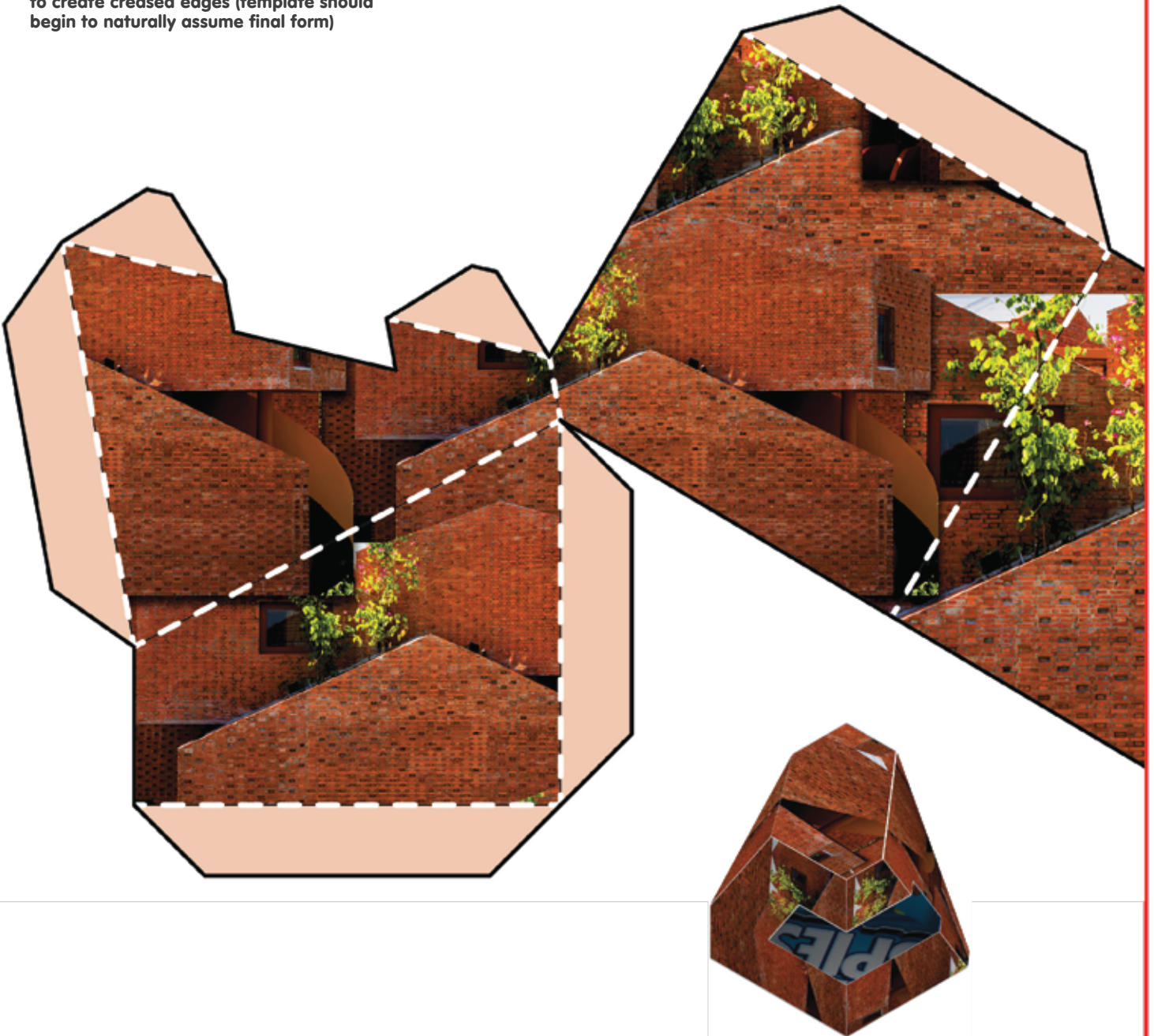


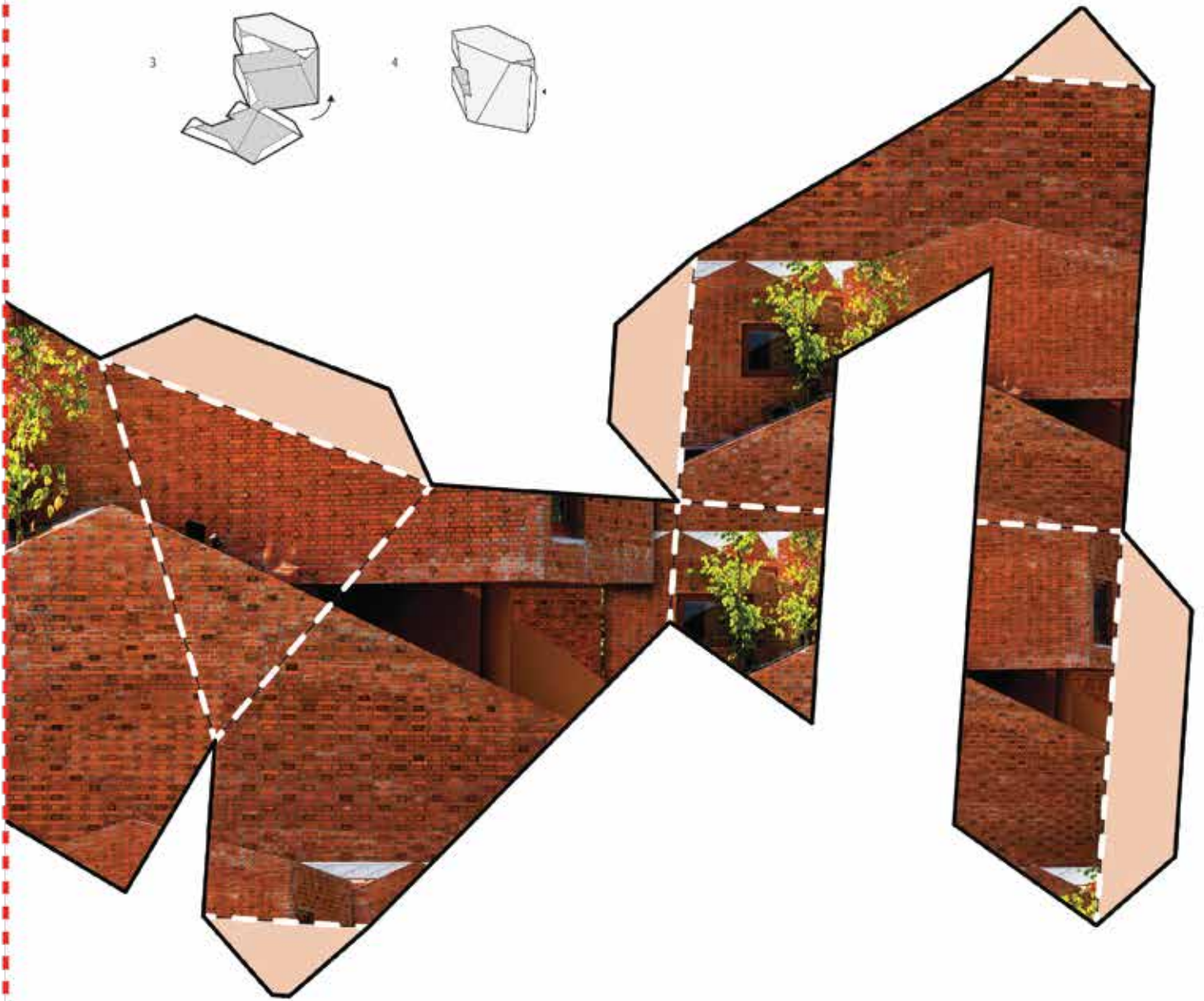
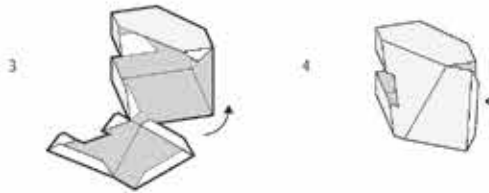
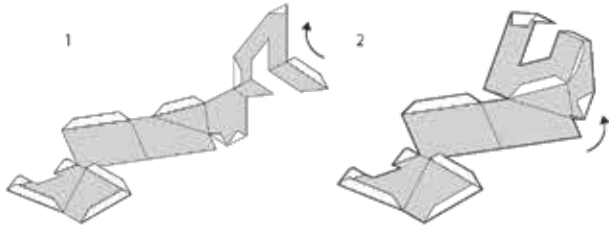


ReMake 3

Georgina Huljich & Marcelo Spina

1. Choose and print desired template
2. Open the top, bottom and one side of of the cereal box to create a flat surface
3. Cut along the solid red line of sheet 1 and align cut edge with dashed red line of sheet 2
4. Tape sheets together within the white space both above and below the image
5. Glue taped template to cardboard face of flattened cereal box with image facing up
6. Carefully cut out the template that has been glued on to the box along solid black line
7. Flip the template over
8. Fold template inward along the dashed lines to create creased edges (template should begin to naturally assume final form)
9. Glue and attach the tabs to their respective sides; hold 20-30 seconds until glue is stable
10. Repeat steps 1-9 with alternate templates to create multiple shapes and textures
11. Use the finished objects to create a composition. Stack them, put them side by side, etc. Look for unique settings and backdrops to give objects new context
12. Lastly, share your project on social media!
@hammer_museum #hammerKAMP



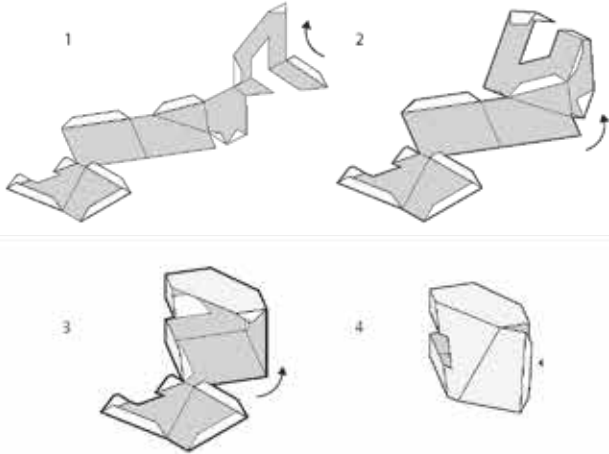


ReMake 3

Georgina Huljich & Marcelo Spina

1. Choose and print desired template
2. Open the top, bottom and one side of of the cereal box to create a flat surface
3. Cut along the solid red line of sheet 1 and align cut edge with dashed red line of sheet 2
4. Tape sheets together within the white space both above and below the image
5. Glue taped template to cardboard face of flattened cereal box with image facing up
6. Carefully cut out the template that has been glued on to the box along solid black line
7. Flip the template over
8. Fold template inward along the dashed lines to create creased edges (template should begin to naturally assume final form)
9. Glue and attach the tabs to their respective sides; hold 20-30 seconds until glue is stable
10. Repeat steps 1-9 with alternate templates to create multiple shapes and textures
11. Use the finished objects to create a composition. Stack them, put them side by side, etc. Look for unique settings and backdrops to give objects new context
12. Lastly, share your project on social media!
@hammer_museum #hammerKAMP

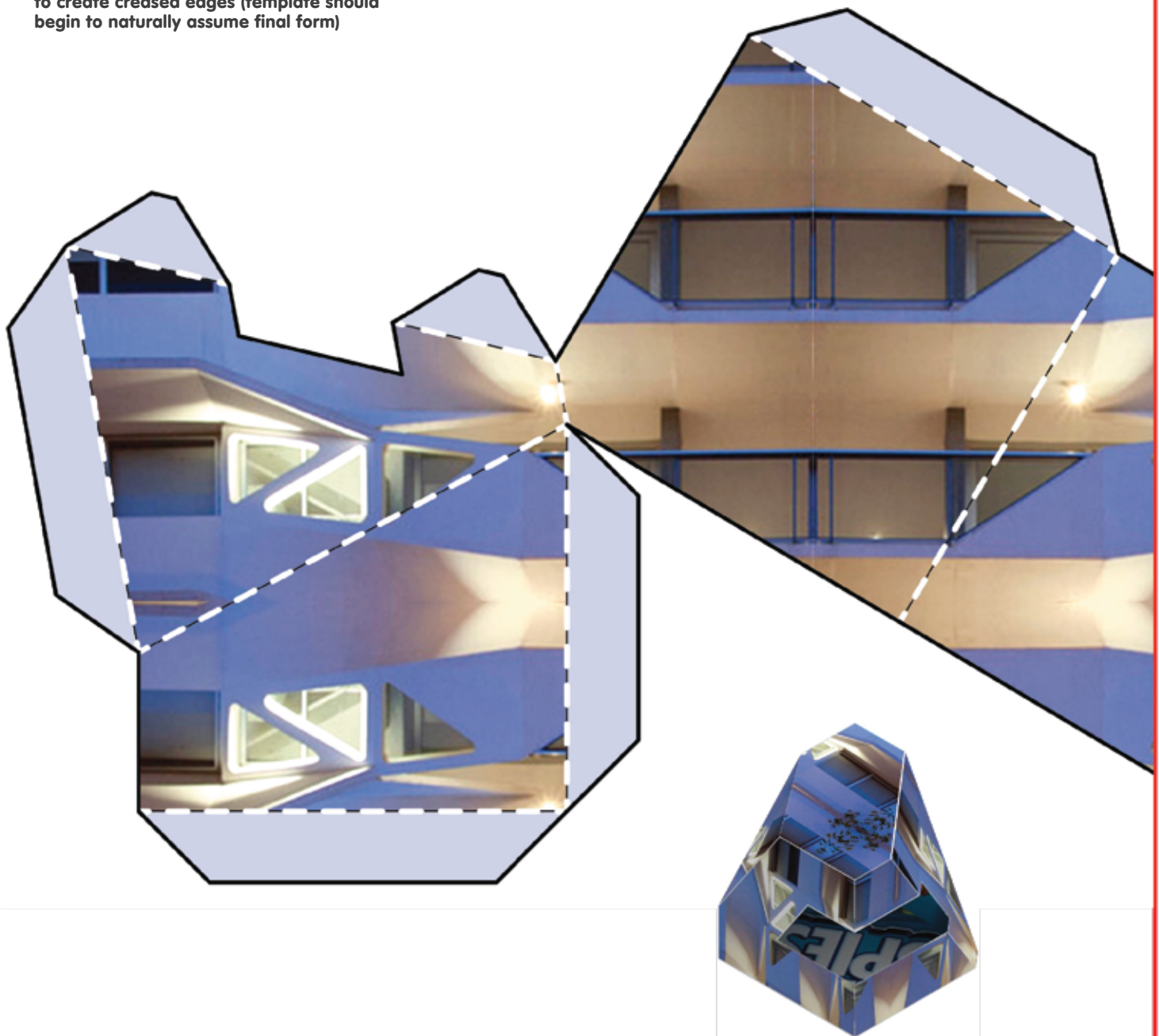


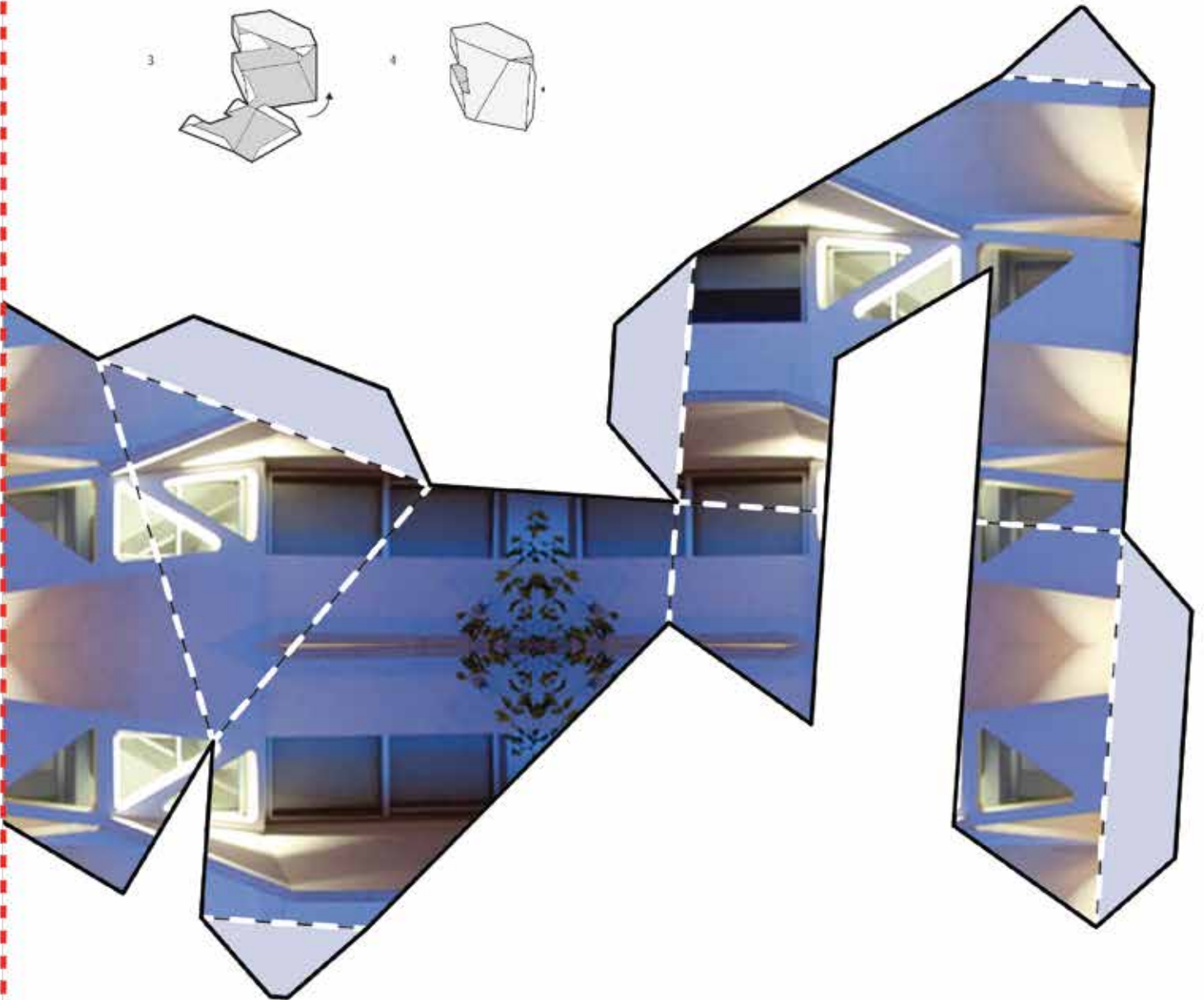
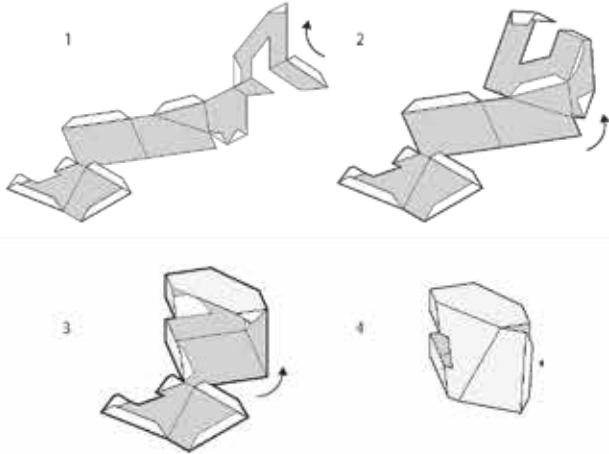


ReMake 3

Georgina Huljich & Marcelo Spina

1. Choose and print desired template
2. Open the top, bottom and one side of of the cereal box to create a flat surface
3. Cut along the solid red line of sheet 1 and align cut edge with dashed red line of sheet 2
4. Tape sheets together within the white space both above and below the image
5. Glue taped template to cardboard face of flattened cereal box with image facing up
6. Carefully cut out the template that has been glued on to the box along solid black line
7. Flip the template over
8. Fold template inward along the dashed lines to create creased edges (template should begin to naturally assume final form)
9. Glue and attach the tabs to their respective sides; hold 20-30 seconds until glue is stable
10. Repeat steps 1-9 with alternate templates to create multiple shapes and textures
11. Use the finished objects to create a composition. Stack them, put them side by side, etc. Look for unique settings and backdrops to give objects new context
12. Lastly, share your project on social media!
@hammer_museum #hammerKAMP

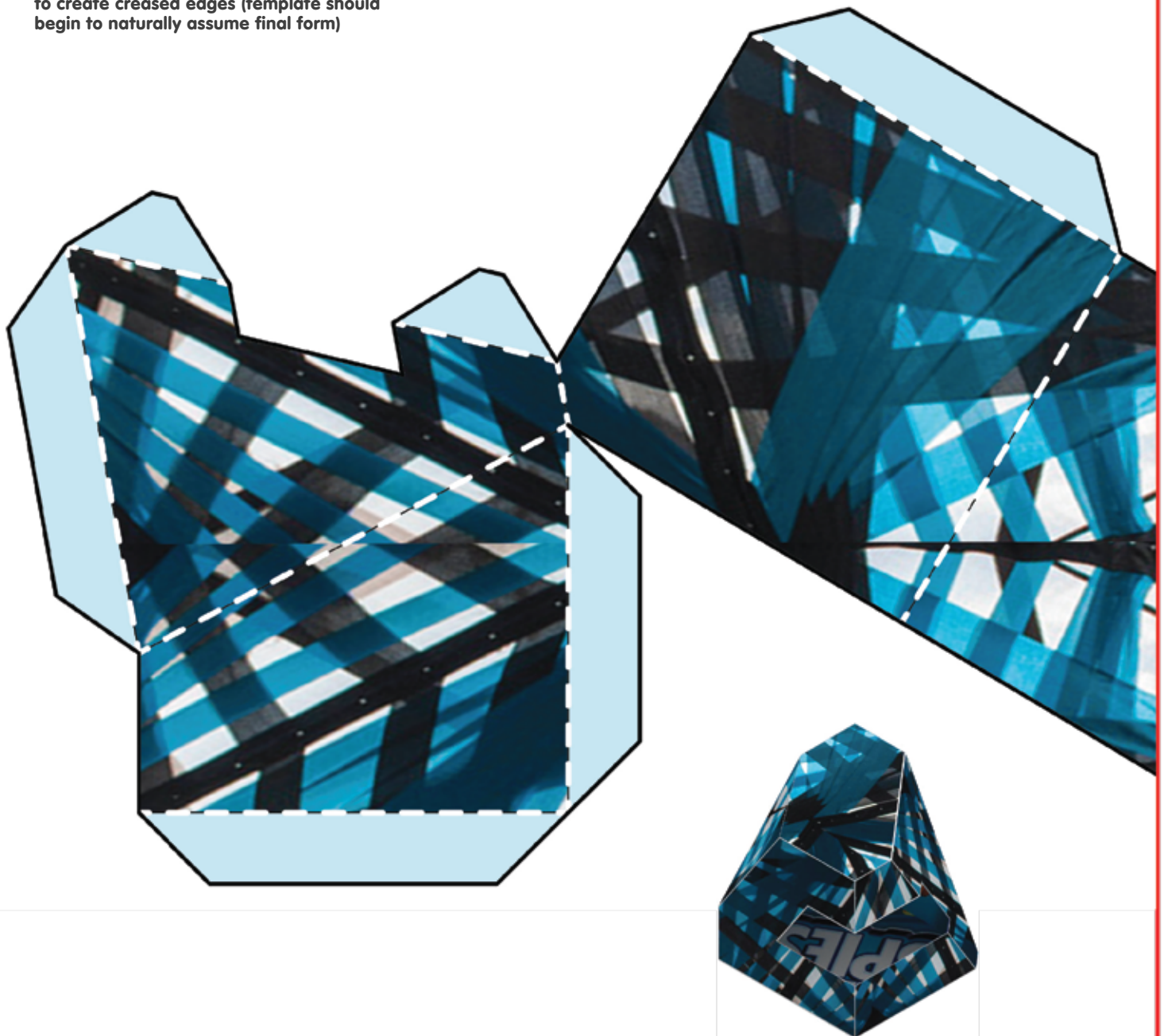


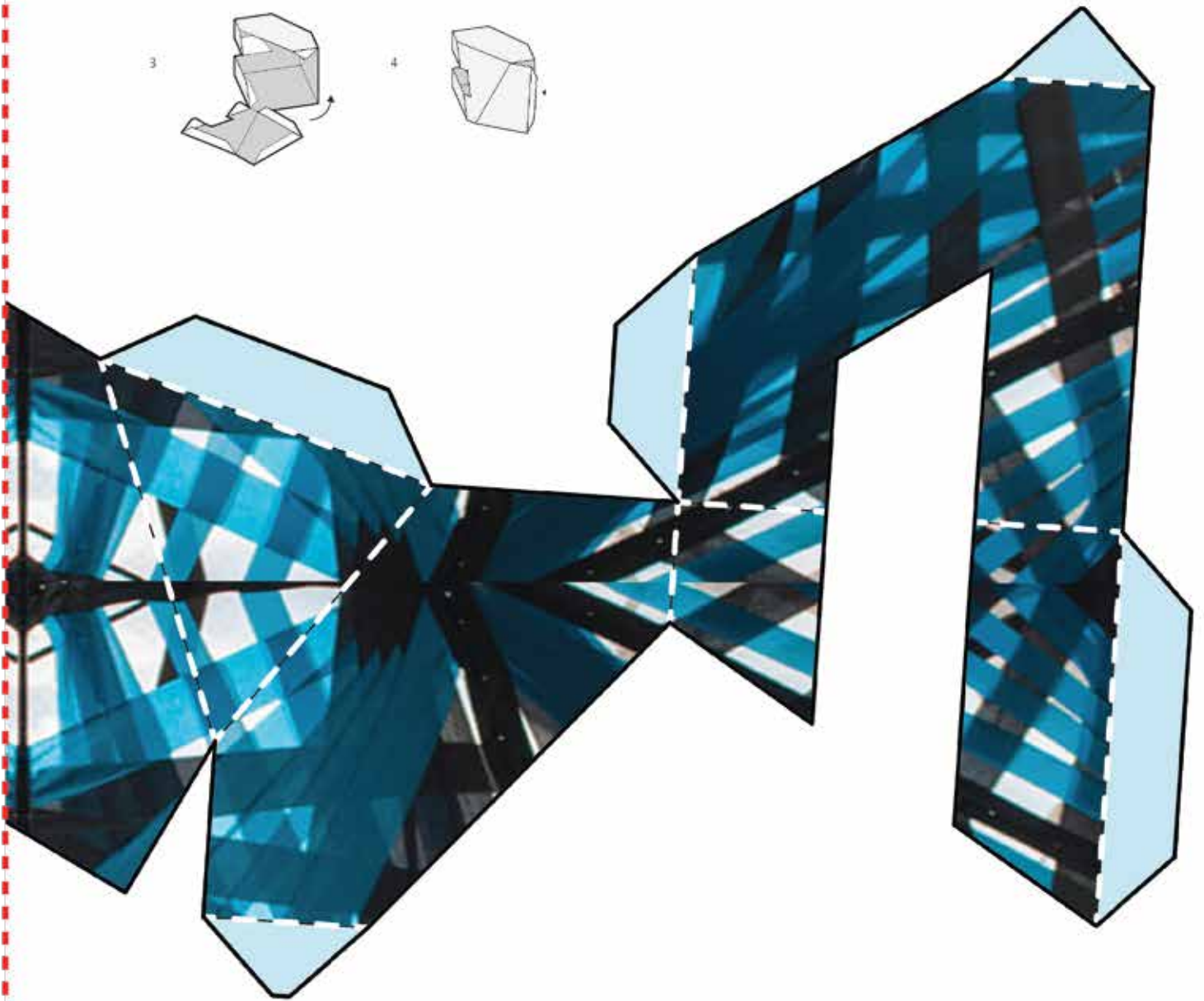
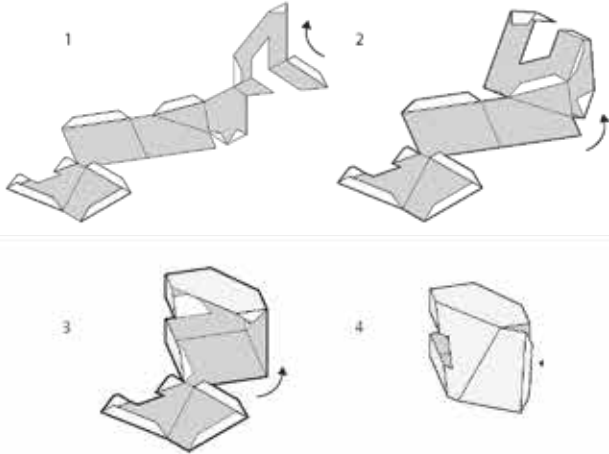


ReMake 3

Georgina Huljich & Marcelo Spina

1. Choose and print desired template
2. Open the top, bottom and one side of of the cereal box to create a flat surface
3. Cut along the solid red line of sheet 1 and align cut edge with dashed red line of sheet 2
4. Tape sheets together within the white space both above and below the image
5. Glue taped template to cardboard face of flattened cereal box with image facing up
6. Carefully cut out the template that has been glued on to the box along solid black line
7. Flip the template over
8. Fold template inward along the dashed lines to create creased edges (template should begin to naturally assume final form)
9. Glue and attach the tabs to their respective sides; hold 20-30 seconds until glue is stable
10. Repeat steps 1-9 with alternate templates to create multiple shapes and textures
11. Use the finished objects to create a composition. Stack them, put them side by side, etc. Look for unique settings and backdrops to give objects new context
12. Lastly, share your project on social media!
@hammer_museum #hammerKAMP





ReMake 3

Georgina Huljich & Marcelo Spina

1. Choose and print desired template
2. Open the top, bottom and one side of of the cereal box to create a flat surface
3. Cut along the solid red line of sheet 1 and align cut edge with dashed red line of sheet 2
4. Tape sheets together within the white space both above and below the image
5. Glue taped template to cardboard face of flattened cereal box with image facing up
6. Carefully cut out the template that has been glued on to the box along solid black line
7. Flip the template over
8. Fold template inward along the dashed lines to create creased edges (template should begin to naturally assume final form)
9. Glue and attach the tabs to their respective sides; hold 20-30 seconds until glue is stable
10. Repeat steps 1-9 with alternate templates to create multiple shapes and textures
11. Use the finished objects to create a composition. Stack them, put them side by side, etc. Look for unique settings and backdrops to give objects new context
12. Lastly, share your project on social media!
@hammer_museum #hammerKAMP

