

Eden's Edge

FIFTEEN L.A. ARTISTS

MAY 13 - SEPTEMBER 2, 2007

GINNY BISHTON
MARK BRADFORD
LIZ CRAFT
HARRY DODGE
& STANYA KAHN
SHARON ELLIS
MATT GREENE
ELLIOTT HUNDLEY

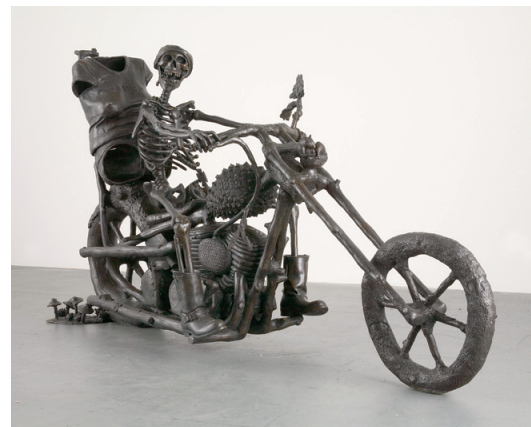
MONICA MAJOLI
MATTHEW MONAHAN
REBECCA MORALES
LARI PITTMAN
KEN PRICE
JASON RHOADES
ANNA SEW HOY
JIM SHAW



Lari Pittman. *Untitled*, 2003. Acrylic, oil, and aerosol lacquer on gessoed canvas over wood panel. Collection of Eileen Harris Norton, Santa Monica. Courtesy of Regen Projects, Los Angeles; photo by Douglas Parker Studio.



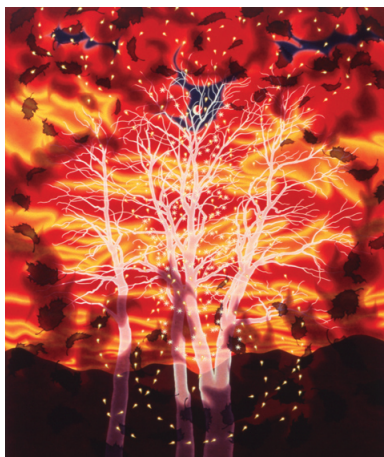
Matt Greene. *For the Eyes of Our Fathers*, 2005. Paint, acrylic, collage, and graphite on canvas. Collection of Peggy Scott and David Teplitzky. Courtesy of Peres Projects, Los Angeles Berlin.



Liz Craft. *Death Rider (Virgo)*, 2002. Bronze. Collection of Dean Valentine and Amy Adelson, Los Angeles. Courtesy of Marianne Boesky Gallery, New York; photo by Joshua White.



Jim Shaw. *Dream Object (By the garage was a big Ganesha statue made of foam with phallic drips coming from the breasts and for a head...)*, 2001. Foam, acrylic, and wood panel. Private Collection. Courtesy of BFAS Blondeau Fine Art Services, Geneva.



Sharon Ellis. *Fire*, 2002. Alkyd on canvas. Collection of Laurel Cutler Israel & Theodore J. Israel Jr. Collection. Courtesy of Christopher Grimes Gallery.



Rebecca Morales. *Untitled (dividing caps)*, 2006. Gouache, watercolor, ink, and pastel on calf vellum. Hammer Museum, Los Angeles; Purchased with funds provided by the Esper A. Petersen Foundation; photo by Joshua White.



Monica Majoli. *Hanging Rubberman #3*, 2004. Watercolor and gouache on paper. The Museum of Modern Art, New York; The Judith Rothschild Foundation Contemporary Drawings Collection Gift, 2005. Courtesy of Gagosian Gallery; photo by Douglas Parker Studio.



Mark Bradford. *Black Venus*, 2005. Mixed media collage. Berezdivin Collection. Courtesy of Sikkema Jenkins & Co., New York.

HAMMER

Hammer Museum
10899 Wilshire Blvd. Los Angeles, CA
310-443-7000 www.hammer.ucla.edu

For additional information or images, please contact
Mikhael Mei Williams, Manager, Communications,
310-443-7056 or mwilliams@hammer.ucla.edu

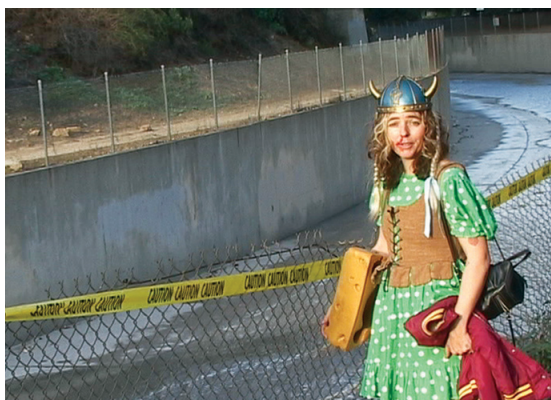
Eden's Edge

FIFTEEN L.A. ARTISTS

MAY 13 – SEPTEMBER 2, 2007



Ginny Bishton. *Walking (Yellow)*, 2003. Photographic collage. Private Collection. Courtesy of Richard Telles Fine Art.



Harry Dodge and Stanya Kahn. *Can't Swallow It, Can't Spit It Out*, 2006. Mini-DV transferred to DVD. Courtesy of the artists and Elizabeth Dee, New York.



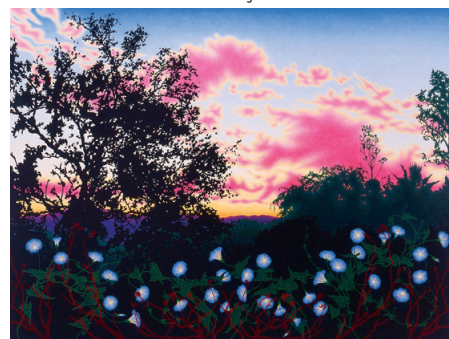
Elliott Hundley. *Deathless Aphrodite of the Spangled Mind*, 2003 (detail). Plastic, paper, color photographs, pins, and wire. Collection of Fred Hoffman and Gary Deutschman.



Ken Price. *Zigzag*, 1999. Acrylic on fired ceramic. Collection of Don and Joan Beall. Courtesy of L.A. Louver, Venice, California.



Anna Sew Hoy. *Dark Cloud Version II*, 2006. Glazed ceramic, rope, suede lace, glass, and mirror. Collection of Schiff Art Projects & Management LLC, New York. Courtesy of Karyn Lovegrove Gallery; photo by Robert Wedemeyer.



Sharon Ellis. *Shall Earth No More Inspire Thee*, 2001. Alkyd on canvas. Collection of Mark Andrus. Courtesy of Christopher Grimes Gallery.



Matt Greene. *Our Idealized Invisibility*, 2006. Painting, acrylic, collage, and graphite on canvas. Collection of Glenn Fuhrman, New York. Courtesy of Peres Projects, Los Angeles Berlin.



Jason Rhoades. *Twelve-Wheel Waggon Wheel Chandelier*, 2004. Glass, wire, neon, wood, Plexiglas, lace, and plastic. Courtesy of the Estate of Jason Rhoades; David Zwirner, New York; and Galerie Hauser & Wirth, Zurich and London.



Matthew Monahan. *The Seller and the Sold*, 2006. Mixed media. Collection David Teiger. Courtesy Stuart Shave/Modern Art, London.

HAMMER

Hammer Museum
10899 Wilshire Blvd. Los Angeles, CA
310-443-7000 www.hammer.ucla.edu

For additional information or images, please contact
Mikhael Mei Williams, Manager, Communications,
310-443-7056 or mwilliams@hammer.ucla.edu