



CORPORATE & NONPROFIT ENTERTAINING

Host an event in one of L.A.'s most inspiring cultural and civic destinations, while supporting an institution that champions art and ideas. From the Hammer's courtyard to its dynamic programming venues, the museum offers a variety of spaces that can be transformed to accommodate either large or intimate events.

Museum venues are ideal for dinners or receptions, live performances or concerts, as well as film screenings or premiere parties. The Hammer's professional events team will work closely with you to make sure your event is a success.

Entertaining privileges at the Hammer are exclusive to corporate, nonprofit, and government agencies, and are not available to the general public. The Hammer is unable to accommodate the following:

- Fundraisers and auctions
- Artwork display of any kind
- Political or religious functions
- Events that are open to the general public
- Events of a personal nature (e.g., weddings, birthday parties, bar/bat mitzvahs, anniversaries, memorial services, school dances, etc.)

For more information about hosting an event at the Hammer, call 310-443-7065 or email corporateevents@hammer.ucla.edu.

HAMMER MUSEUM

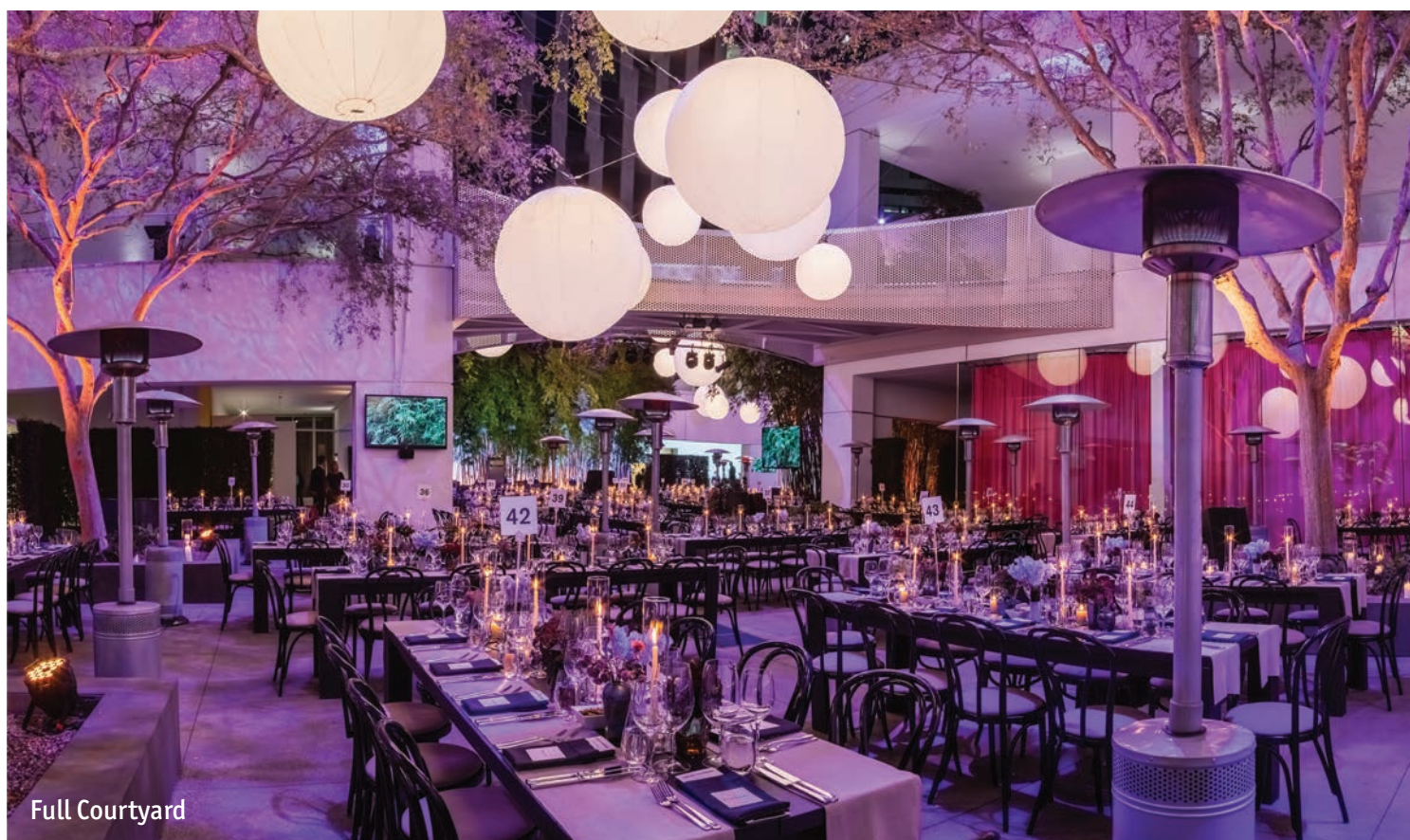
10899 Wilshire Blvd. Los Angeles, California 90024

PRITZKER FAMILY COMMONS

2

The Hammer's courtyard is the heart and soul of the museum. This vibrant urban oasis is a welcoming venue for concerts, outdoor screenings, performances, and cocktail receptions. With a capacity of 900, the courtyard offers guests an open-air space with the intimacy of a private garden.

SQUARE FEET:	8,000
CAPACITY:	900 Cocktail 500 Banquet
RENTAL FEE:	\$25,000



Full Courtyard



South Courtyard



North Courtyard

BILLY WILDER THEATER

3

The state-of-the-art, 285-seat Billy Wilder Theater is the home of the Hammer's engaging and provocative public programs and of the UCLA Film & Television Archive's cinematheque. With advanced **technical capabilities** and stadium seating in the Hammer's signature pink, the theater is ideal for screenings and lectures. *No food or drink is allowed in the theater.*

SCREEN SIZE: 15.5 x 37 ft.
STAGE SIZE: 16 x 30 ft.
CAPACITY: 285 Seats
RENTAL FEE: \$7,500



Theater Interior



Theater Lobby



Green Room

NIMOY STUDIO

The Susan Bay Nimoy and Leonard Nimoy Studio is a versatile space adjacent to the courtyard and Billy Wilder Theater that is able to host everything from meetings and presentations to dinners and receptions. Equipped with wifi, a projector, and microphones available upon request, the studio also features a large exterior window overlooking Westwood Boulevard and a folding glass wall that opens to the courtyard.

SQUARE FEET:	2,850
CAPACITY:	300 Cocktail 120 Banquet 200 Theater
RENTAL FEE:	\$5,000



ANNENBERG TERRACE

Located on the third floor of the museum, the Annenberg Terrace is a covered space with a bird's-eye view into the museum courtyard as well as sweeping views of Westwood Village and the Santa Monica Mountains. The space features a glass enclosure system that allows the terrace to function as a stand-alone venue or remain open to the activity of the courtyard.

SQUARE FEET:	3,270
CAPACITY:	350 Cocktail 180 Banquet
RENTAL FEE:	\$7,500



McMORROW TERRACE

OPENING FALL 2019

6

Located outside of two entirely new exhibition spaces, the McMorrow Terrace will serve as a lively site for receptions and intimate gatherings. With concrete floor and stainless steel and glass gallery entrances, the terrace will match the modern aesthetic that architect Michael Maltzan has implemented in previous projects at the Hammer.

SQUARE FEET: 1,000
CAPACITY: 50 Cocktail
RENTAL FEE: \$2,500



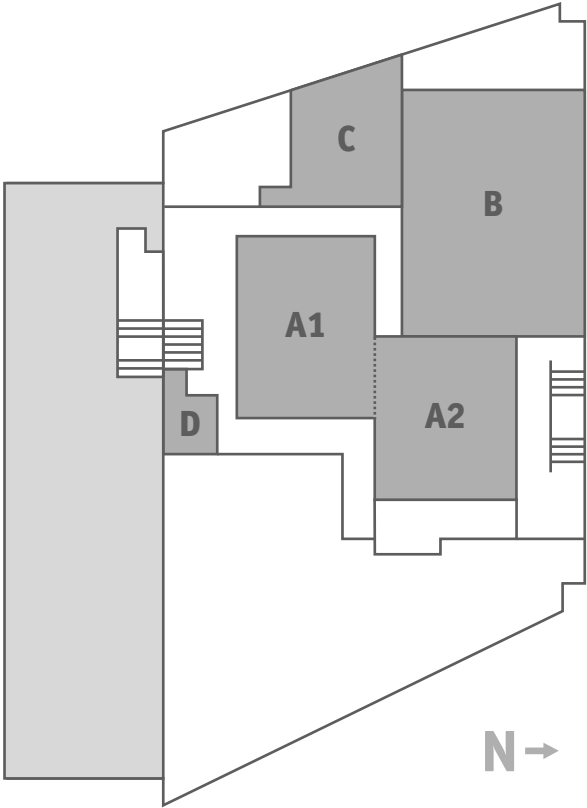
THE LAB

7

The Lab fosters dialogue and engagement, making it perfect for small retreats or presentations. Equipped with wifi, a projector, and Apple TV, this unique modern space features a flexible glass wall that can easily open to the courtyard or can remain closed, with curtains pulled, for more privacy.

SQUARE FEET: 610
CAPACITY: 16 Meeting
25 Cocktail
25 Theater
RENTAL FEE: \$1,500



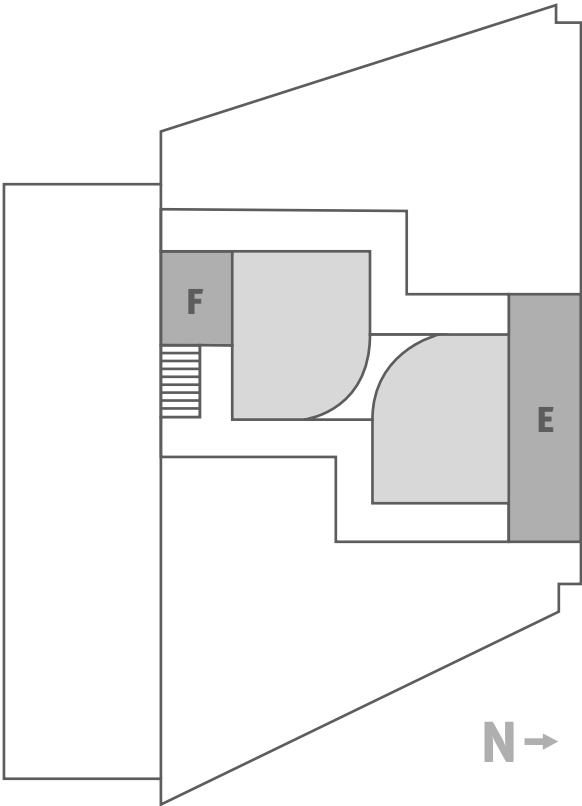


LEVEL 2

- A1, A2 PRITZKER FAMILY COMMONS (Full Courtyard)**
Square Feet: 8,000 Cost: \$25,000
Max Capacity: 900
- A1 SOUTH COURTYARD**
Square Feet: 4,000 Cost: \$5,000
Max Capacity: 500
- B BILLY WILDER THEATER**
Stage Size: 16 x 30 ft Cost: \$7,500
Capacity: 285 Seats
- C NIMOY STUDIO**
Square Feet: 2,850 Cost: \$5,000
Capacity: 300
- D THE LAB**
Square Feet: 610 Cost: \$1,500
Capacity: 25

LEVEL 3

- E ANNENBERG TERRACE**
Square Feet: 3,270 Cost: \$7,500
Max Capacity: 350
- F McMORROW TERRACE**
Square Feet: 1,000 Cost: \$2,500
Max Capacity: 50





FEES & SERVICES

RENTAL FEES

VENUE	CORPORATE	NONPROFIT
Pritzker Family Commons	\$25,000	\$20,000
Billy Wilder Theater	\$7,500	\$6,000
Annenberg Terrace	\$7,500	\$6,000
South Courtyard	\$5,000	\$4,000
Nimoy Studio	\$5,000	\$4,000
McMorrow Terrace	\$2,500	\$2,000
The Lab	\$1,500	\$1,200

Fee includes same-day set-up and strike; additional fees apply for extra set-up or strike time.

ADDITIONAL FEES & SERVICES

AV Support	Onsite Parking
Building Engineering	Security Officers
Facilities / Porters	Visitor Experience Staff
Gallery Staff	

Additional fees and services vary per event requirements and event hours.

CORPORATE MEMBERSHIP | \$2,500

Interested corporations agree to join our Corporate Membership program before hosting an event at the museum. A membership fee of \$2,500 will be added to your rental fee and will provide you the following benefits:

- Opportunity to host events in Museum spaces (rental fees apply)
- 10% discount at the Hammer Museum Store for all employees
- Designation of 1 employee to be a Hammer Fellow member
- Invitation for 10 employees to member receptions
- A \$2,050 tax-deductible letter

Nonprofit organizations with proof of 501(c)(3) status and government agencies do not require a corporate membership.

Rental of the Lab does not require a Hammer Corporate Membership

For more information about Corporate Memberships, call 310-443-7050 or email membership@hammer.ucla.edu.



VENDOR LIST

List subject to change

PREFERRED CATERER

Audrey at the Hammer

Ashleigh Parsons
ashleigh@audreyatthehammer.com
audreyatthehammer.com
310-443-7037

Located within the Hammer's courtyard, Audrey blends elevated and soulful cooking with a contemporary Southern California feel rooted in the region's growing seasons. From restaurateur Soa Davies Forrest and chef Lisa Giffen, the dishes emphasize European flavors and techniques complemented by a full bar offering fresh, bright cocktails and a diverse wine list showcasing small production winemakers.

APPROVED CATERERS

Fundamental LA

Lauren Morales
lauren.morales@fundamental-la.com
fundamental-events.com
310-463-3113

Wolfgang Puck

Lauren Morrison
lauren.morrison@wolfgangpuck.com
wolfgangpuck.com/catering
608-385-5361

Carmelized Productions

events@carmelizedproductions.com
carmelizedproductions.com
310-948-9947

AV / LIGHTING

Audio Video West

Jamie Van Noy
jamie@audiovideowest.com
audiovideowest.com
310-268-0036

DBS Sound & Lighting

Ruben Silva
rubendbs1@hotmail.com
dbssoundandlighting.com
323-816-3288

Kinetic Lighting

Jennifer Skinner
jennifer.skinner@kineticlighting.com
kineticlighting.com
323-855-0497

FURNITURE

Town & Country

Mike Koshimizu
mike@tacer.biz
tacer.biz
310-849-9217

Cosmos Neon Designs

Patricia Gonzalez
cosmosneon@cosmosneon.com
323-759-3620

VALET

Premiere Valet Services

Ryan Petakoff
ryan@premierevaletparking.com
premierevaletparking.com
323-876-5816