

Hammer Museum Winter 2011/12

10899 Wilshire Boulevard Los Angeles, California 90024 USA
For additional program information: 310-443-7000
www.hammer.ucla.edu



Non Profit Org.
US Postage
PAID
Los Angeles, CA
Permit no. 202

HAMMER

Winter 2011/12 Calendar

HOLIDAY SALE MEMBERS ONLY!

HAMMER MEMBERS RECEIVE 20%
OFF IN THE HAMMER STORE
DECEMBER 8-15.

CHARLES WHITE, BIRMINGHAM TOTEM (DETAIL), 1964. INK AND CHARCOAL ON PAPER. 71 7/16 X 40 1/16 IN. (181.5 X 101.8 CM). HIGH MUSEUM OF ART, ATLANTA, GEORGIA; PURCHASE WITH FUNDS FROM EDITH G. AND PHILIP A. RHODES AND THE NATIONAL ENDOWMENT FOR THE ARTS.



A MESSAGE FROM THE DIRECTOR

If you have been to the museum recently I am sure you noticed the construction taking place in the courtyard. We are very excited to see some important and long overdue improvements to our space finally realized. Although it will not interrupt any of our programs and activities, the construction will continue through the spring of 2012 and will improve the overall look and function of the courtyard spaces. We will be adding a new space—The Lab—which will provide a much needed area for student workshops, seminars, and other educational and community activities. We will also be dramatically opening up the foyer area of the Billy Wilder Theater with a glass wall looking out to the courtyard. The Hammer courtyard is a public oasis for the westside of the city and our goal is to make the space more welcoming, beautiful, and easier to navigate.

In October we opened *Now Dig This! Art and Black Los Angeles 1960–1980* to large new audiences and critical acclaim. This exhibition, part of the city-wide initiative Pacific Standard Time, is an important step in broadening the history of art in L.A. to include the significant contributions of the city's African American artists.

On the first weekend of the Pacific Standard Time celebration when we were free to all visitors, we noticed a huge, positive response and visitors who were not regulars to our institution. This prompted us to reach out further by offering **free admission to the Hammer on Sundays through the run of *Now Dig This!*** (closing January 8, 2012). Spread the word and bring all your friends and family to enjoy this powerful exhibition.

Accompanying the exhibition is a slate of free public programs, including a Hammer Conversation with curator Kellie Jones and her father, the esteemed poet and activist

Amiri Baraka. Other highlights of the season include two additional Conversations—one with the legendary Angela Davis and author Robin Levi, and another with writer Hilton Als and artist extraordinaire Kara Walker.

Additionally, as part of the Pacific Standard Time Performance Festival, in January the Hammer will present two important performances—one by the legendary Eleanor Antin, and one by *Now Dig This!* artists Maren Hassinger, Senga Nengudi and Ulysess Jenkins (see page 16).

Finally, as we celebrate the history of art in Los Angeles with Pacific Standard Time, the Hammer is also gearing up to celebrate the art of the moment with our upcoming exhibition *Made in L.A. 2012*. Opening the first weekend in June 2012, *Made in L.A.* is a collaboration with LA><ART and will take place at three different locations throughout the city including the Hammer, LA><ART, and the Los Angeles Municipal Gallery at Barnsdall Art Park in Los Feliz. This biennial exhibition focuses on work created in Los Angeles by the city's emerging and overlooked artists and runs through August 2012. There will be roughly 60 artists included in the exhibition and much of the work will be specifically commissioned for the biennial. We are very grateful that Wells Fargo has come on to be the presenting sponsor for what will certainly be an exciting art event all summer long. There will be more exciting announcements forthcoming about *Made in L.A.*, including the list of artists, so stay tuned!

Ann Philbin, Director



HAMMER NEWS

NOW DIG THIS! STUDENT OUTREACH PROGRAM

The Hammer Museum is pleased to have offered an outreach program for high school students in conjunction with the exhibition *Now Dig This! Art and Black Los Angeles 1960–1980*. Providing transportation and free exhibition tours to hundreds of students in October and November, the Hammer welcomed many Los Angeles-area high schools, including Hollywood Media Arts Academy, Crenshaw High School, View Park Preparatory Accelerated Charter High, Frederick Douglass Academy High School, and Lou Dantzler Preparatory Charter High School. Several of these schools have historical ties to artists and events highlighted in the exhibition. The museum also provided educators with a resource guide with supplementary teaching materials for the classroom.

Now Dig This! outreach programs have been made possible by the Eileen Harris Norton Foundation, The Kenneth T. and Eileen L. Norris Foundation, Ina Coleman and Alan Wilson, and V. Joy Simmons, M.D.

Free tours of the exhibition are available to all school groups and nonprofits. For reservations, please call Academic Programs at 310-443-7041.

FREE SUNDAYS! THROUGH JANUARY 8, 2012

The Hammer is offering complimentary museum admission for all exhibitions every Sunday until the closing of the exhibition *Now Dig This! Art and Black Los Angeles 1960–1980*. Bring the entire family.

NOW AVAILABLE HAMMER iPad APP

The Hammer's free iPad app is now available on iTunes. Like the free mobile app we launched last May, the iPad app is rich with content related to our permanent and special exhibitions and includes videos, audio guides, and image slideshows, along with tools to help you plan your visit. In addition, the iPad app and the mobile app now include information about upcoming public programs.

ABOVE: HIGH SCHOOL STUDENTS VISITING THE MUSEUM'S PERMANENT COLLECTION.
OPPOSITE, TOP-BOTTOM: RENDERINGS FOR THE NEW HAMMER EDUCATION LAB. DIRECTOR ANN PHILBIN

NOW DIG THIS!

ART & BLACK LOS ANGELES 1960–1980

THROUGH JANUARY 8, 2012

“REQUIRED VIEWING”

— *Los Angeles Times*

“ONE OF PST’S BEST EARLY-ROUND EXHIBITIONS”

— *Wall Street Journal*

This comprehensive exhibition examines the vital legacy of the city’s African American visual artists, who—through their work and their connections with other artists from a variety of ethnic backgrounds—made up an important part of the creative community. Including 140 works by 35 artists, many of whom are not well known to the public, *Now Dig This!* expands the art historical record, placing the work of these African American practitioners within the context of the movements, trends, and ideas that fueled the arts in Los Angeles during this period. Many of these artists also responded to the civil rights and Black Power movements, and their work reflects the changing sense of what constituted African American identity and American culture.

Artists featured in the exhibition include Melvin Edwards, Fred Eversley, David Hammons, Maren Hassinger, Senga Nengudi, John Outterbridge, Alonzo Davis, Dale Brockman Davis, Noah Purifoy, Betye Saar, and Charles White. Organized by Kellie Jones, associate professor of art history at Columbia University.

Now Dig This! Art and Black Los Angeles 1960–1980 has been made possible by major grants from the Getty Foundation.

Generous support has been provided by the Henry Luce Foundation; the National Endowment for the Arts, a federal agency; The Andy Warhol Foundation for the Visual Arts, which funded a Curatorial Research Fellowship; and The Broad Art Foundation. Additional support has been provided by the Eileen Harris Norton Foundation, The Kenneth T. and Eileen L. Norris Foundation, Ina Coleman and Alan Wilson, and V. Joy Simmons, M.D. In-kind support has been provided by InterfaceFLOR.

Now Dig This! is presented as part of Pacific Standard Time, a collaboration of more than sixty cultural institutions across Southern California, coming together for six months beginning in October 2011 to tell the story of the birth of the Los Angeles art scene and how it became a new force in the art world.

NOW DIG THIS! ART AND BLACK LOS ANGELES, 1960–1980. INSTALLATION VIEW AT THE HAMMER MUSEUM, LOS ANGELES. OCTOBER 2, 2011–JANUARY 8, 2012. PHOTOGRAPHY BY ROBERT WEDEMEYER.

EXHIBITION-RELATED PROGRAMS

SUNDAY, DECEMBER 4, 2PM

HAMMER LECTURES

YOU’VE COME A LONG WAY BABY

With Barbara McCullough, Sheila Levrant de Bretteville, Josine Ianco-Starrels, Suzanne Jackson, and Bridget Cooks See page 18

THURSDAY, DECEMBER 8, 7PM

HAMMER LECTURES

race, pLace, and bLack L.A.

With Robin D. G. Kelley, Jacqueline Stewart, Daniel Widener, and Kellie Jones See page 18

THURSDAY, DECEMBER 15, 7PM

HAMMER PRESENTS

Jason Moran See page 16

3-DAY CLOSING CELEBRATION

Free admission Friday, January 6 to Sunday, January 8

FRIDAY, JANUARY 6, 7PM

CLOSING WEEKEND KICK-OFF

Join artists and friends for late night art viewing, special DJ set, and cash bar.

SATURDAY, JANUARY 7

FAMILY DAY

Enjoy a fun filled day of art making activities and workshops with renowned contemporary artists. Visit hammer.ucla.edu for details.

SUNDAY, JANUARY 8

CLOSING DAY

2PM HAMMER CONVERSATIONS

Amiri Baraka & Kellie Jones See page 13

THURSDAY, JANUARY 26, 7PM

HAMMER PRESENTS

WALKING TALL

With Maren Hassinger, Senga Nengudi, and Ulysses Jenkins See page 16



Presenting Sponsors



The Getty

Bank of America



ALINA SZAPOCZNIKOW SCULPTURE UNDONE, 1955–1972

FEBRUARY 5 – APRIL 29, 2012

Alina Szapocznikow: Sculpture Undone, 1955–1972 is the first museum survey in the United States devoted to this Polish artist. The exhibition brings to light the extraordinary oeuvre of Alina Szapocznikow, one of the most significant yet lesser known sculptors of the 20th century. At the core of Szapocznikow's art is the ephemeral condition of life and the human body. Her work oscillates between permanence and impermanence, from carvings in Carrara marble to the precarious assemblages of lips and breasts cast in polyester resin. The exhibition includes approximately 60 sculptures and 50 works on paper, as well as a poignant group of photographic works, demonstrating the tremendous range and scope of Alina Szapocznikow's art.

RELATED PROGRAMS

SUNDAY, FEBRUARY 5, 2PM

HAMMER LECTURES

GRISELDA POLLOCK

Too Early and Too Late: The Sculptural Dissolutions of Alina Szapocznikow in and out of Time

See page 18

THURSDAY, FEBRUARY 16, 7PM

HAMMER SCREENINGS

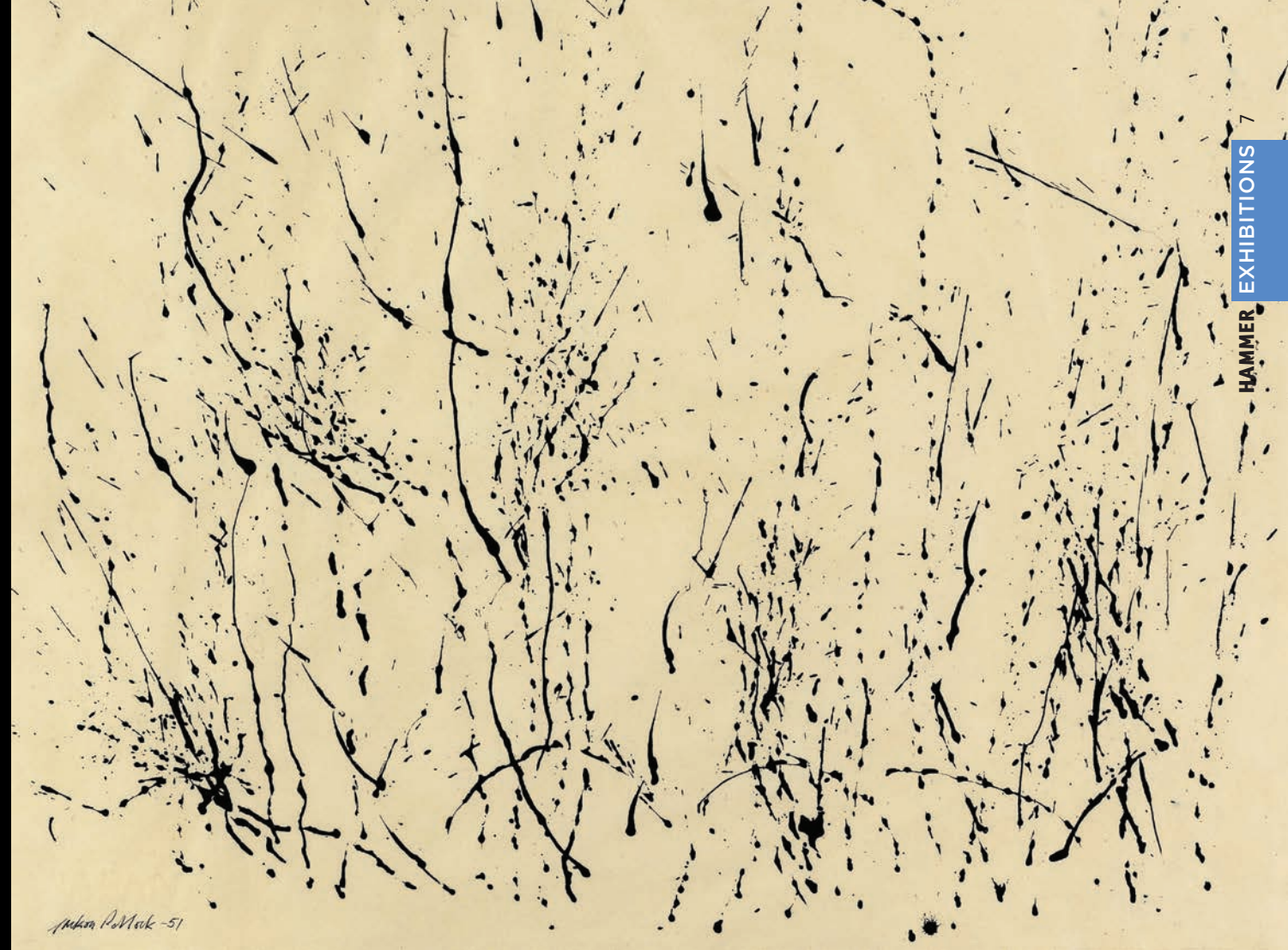
Yael Bartana and Dani Gal

See page 20

Alina Szapocznikow: Sculpture Undone, 1955–1972 is organized by WIELS Contemporary Art Centre, Brussels, and the Museum of Modern Art, Warsaw, in collaboration with The Museum of Modern Art, New York, and the Hammer Museum, Los Angeles.

This exhibition and the accompanying catalogue are generously supported by The Andy Warhol Foundation for the Visual Arts.

The Hammer Museum's presentation is made possible through a major gift from Alice and Nahum Lainer. Generous support is also provided by Herta and Paul Amir. The exhibition is also made possible by additional support from Alisa and Kevin Ratner and The Audrey & Sydney Irmas Charitable Foundation.



SUSAN AND LARRY MARX COLLECTION

FEBRUARY 5 – MAY 6, 2012

Major gifts by dedicated patrons have often been the building blocks of museum collections. The Hammer Museum is proud to be the recipient of a substantial promised gift from our longtime supporters Susan and Larry Marx. This is the first public presentation of a selection from the extraordinary gift that the Marxes have pledged to the Hammer. The Marx Collection comprises more than 150 paintings, sculptures, and works on paper made by 109 different artists. This postwar collection includes many exemplary works by seminal abstract expressionist and conceptual artists, alongside exciting works by newer artists, and will complement the Hammer Contemporary Collection. The exhibition is curated by Douglas Fogle, chief curator and deputy director of exhibitions and public programs at the Hammer.

ABOVE, LEFT–RIGHT: ALINA SZAPOCZNIKOW. *AUTOPORET I (SELF-PORTRAIT I)*, 1966. MARBLE AND POLYESTER RESIN; 16½ x 11 ½ x 7½" (41 x 30 x 20 CM). COURTESY ESTATE ALINA SZAPOCZNIKOW / PIOTR STANISLAWSKI / GALERIE LOEVENBRUCK, PARIS. © ADAGP, PARIS. PHOTO FABRICE GOUSSET. JACKSON POLLOCK. UNTITLED, 1951. INK ON JAPAN PAPER. 17½ x 22¼ IN. (44.5 x 56.5 CM). HAMMER MUSEUM, LOS ANGELES. PROMISED GIFT OF SUSAN AND LARRY MARX.

HAMMER PROJECTS

Hammer Projects is a series of exhibitions focusing primarily on the work of emerging artists.



SARA VANDERBEEK

CONTINUES THROUGH JANUARY 8, 2012

PATRICIA ESQUIVIAS

CONTINUES THROUGH FEBRUARY 12, 2012

Hammer Projects is made possible with major gifts from Susan Bay Nimoy and Leonard Nimoy and The Horace W. Goldsmith Foundation.

Additional generous support is provided by the Los Angeles County Board of Supervisors through the Los Angeles County Arts Commission; Good Works Foundation and Laura Donnelley; L A Art House Foundation; Kayne Foundation—Ric & Suzanne Kayne and Jenni, Maggie & Saree; the Department of Cultural Affairs, City of Los Angeles; and the David Teiger Curatorial Travel Fund.

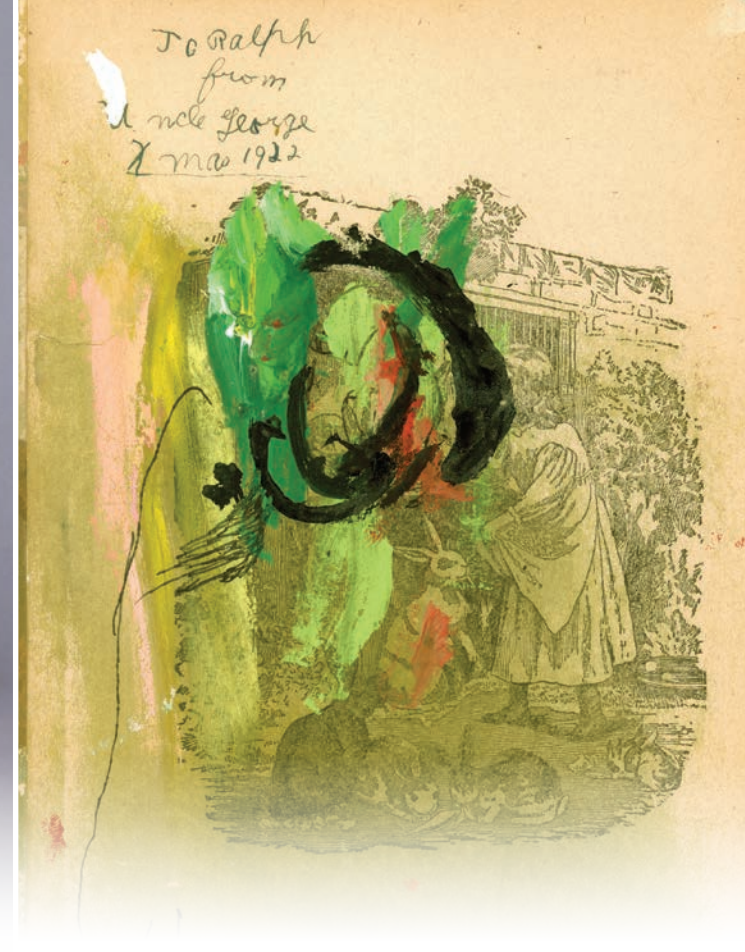
ABOVE, LEFT-RIGHT: *HAMMER PROJECTS*: SARA VANDERBEEK. INSTALLATION VIEW AT THE HAMMER MUSEUM, LOS ANGELES. SEPTEMBER 10, 2011–JANUARY 8, 2012. PHOTOGRAPHY BY BRIAN FORREST. CARLOS BUNGA. *UNTITLED MODEL #1*, 2002. CARDBOARD, PACKING TAPE, AND PAINT. 9 $\frac{1}{16}$ x 9 $\frac{1}{16}$ x 13 $\frac{3}{4}$ IN. (23 x 25 x 35 CM). COURTESY OF THE ARTIST AND GALERÍA ELBA BENÍTEZ, MADRID. ANTONY. *XMAS 1922*, 2010 (DETAIL). INK AND PAINT ON PRINTED PAGE. 9 x 7 $\frac{1}{4}$ IN. (22.1 x 18.9 CM). COURTESY OF THE ARTIST. ALEX HUBBARD. *UNTITLED*, 2011 (DETAIL). ACRYLIC, ENAMEL PAINT, RESIN, AND FIBERGLASS ON CANVAS. 84 x 62 IN. (213.4 X 157.5 CM) COURTESY OF THE ARTIST AND MACCARONE, NEW YORK.



CARLOS BUNGA

CONTINUES THROUGH APRIL 22, 2012

Trained as a painter, Barcelona-based Portuguese artist **Carlos Bunga** has expanded his practice to encompass multiple mediums, including collage, drawing, performance, sculpture, and video. In his architecturally scaled installations, Bunga uses mass-produced materials like cardboard, packing tape, and house paint to build structures that recall temporary shelters or life-size maquettes. Built over a period of weeks, his largely improvised, site-specific sculptures are made in direct dialogue with the surrounding architecture. Bunga likens the process to making an abstract painting in three dimensions. *Hammer Projects: Carlos Bunga* includes a new work made on-site for the Lobby Wall as well as a selection of Bunga's drawings, paintings, sculptures, and videos dating from 2002 to 2008 on view in the Lobby Gallery. Organized by Corrina Peipon, Hammer curatorial associate.



ANTONY

JANUARY 22 – MAY 13, 2012

Over the past 20 years, **Antony** has developed an esoteric and diverse body of work that includes not only his critically acclaimed music and elaborate performances but also his lesser-known work in collage, drawing, and sculpture. Antony's work emerges from a set of rituals such as washing and burning paper or engaging in repetitive mark-making as well as cutting, tearing, and sewing found images. Antony's growing visual vocabulary reflects his ideas about the power of human intuition, the sacredness of nature, transgenderism, and the revolutionary potential of the feminine. The exhibition will feature collages and drawings made from the late 1990s to 2011, some of which were recently published in *Swanlights*, a book accompanying the 2010 Antony and the Johnsons album. Organized by guest curator James Elaine.



ALEX HUBBARD

FEBRUARY 18 – MAY 20, 2012

Working with fiberglass, paint, and resin, New York-based artist **Alex Hubbard** creates richly textured abstract works that challenge the two-dimensional limits of the conventional picture plane. These large paintings engulf the viewer with bright colors and all over compositions that often include assemblage elements or silk-screened imagery. Just as found objects appear in Hubbard's paintings, his stockpile of construction and art materials, urban detritus, domestic items, and even the occasional animal make their way into his dynamic videos. Avoiding a single point of focus, Hubbard constructs his videos in layers in a process analogous to his painting technique. His elaborate Foley sound tracks add a delightful and provocative dimension to these adventurous visual narratives that explore the construction, composition, color, and depth of images. *Hammer Projects: Alex Hubbard* is his first one-person museum exhibition. Organized by Corrina Peipon, Hammer curatorial associate.



HAMMER COLLECTIONS

RECENT ACQUISITIONS FROM

THE GRUNWALD CENTER FOR THE GRAPHIC ARTS

CONTINUES THROUGH JANUARY 22, 2012

In 1956 Los Angeles collector Fred Grunwald made an extraordinary gift of more than 5,000 works on paper to establish the Grunwald Center for the Graphic Arts at UCLA. Today the center's collection has grown to more than 45,000 prints, drawings, photographs, and artists' books, dating from the Renaissance to the present. This exhibition includes a selection of works acquired by the Grunwald Center during the past five years. They range from a vibrant 16th century engraving by Renaissance artist **Hieronymus Wierix** to a large-scale aquatint from 2010 by artist **Julie Mehretu**. Other artists represented in the exhibition include **Pieter Bruegel the Elder**, **Enrico Castellani**, **Vija Celmins**, **Robert Gober**, **Robert Heinecken**, and **Kara Walker**. Organized by Cynthia Burlingham director; and Allegra Pesenti, curator, UCLA Grunwald Center for the Graphic Arts.

SELECTIONS FROM THE

HAMMER CONTEMPORARY COLLECTION

CONTINUES THROUGH JANUARY 22, 2012

In 2005 the Hammer launched an exciting initiative to build a collection of contemporary art through both purchases and gifts. Acknowledging the breadth of mediums engaged by contemporary artists, this growing collection encompasses works in drawing, film, painting, photography, sculpture, and video. While the Hammer Contemporary Collection has focused particular attention on artists from Southern California, it is also dedicated to the acquisition of works by artists throughout the United States and internationally. In this installment from our series of exhibitions featuring works from the collection, the Hammer is proud to present several significant recent acquisitions, including **Glenn Kaino's** *Untitled (Ricky Jay)* (2010), **Siobhan Liddell's** *Ordinary Magic* (2010), and **Nancy Rubins's** monumental *Drawing* (1975–2010). Organized by Ann Philbin, director, and Corrina Peipon, curatorial associate.



PUBLIC ENGAGEMENT

The Hammer Museum's Public Engagement program is supported through a major grant from The James Irvine Foundation.

UNITED WE STAND

THIS WINTER

Last spring artist **Lisa Anne Auerbach** trained as a Hammer security guard to gain insight on the role of guards at the museum. She subsequently worked shifts in the galleries that informed her Public Engagement project, *United We Stand*. For her subtle intervention, Auerbach replaced the guards' standard blazers with a new set of blazers, tailored for each guard and bearing a slogan on the back related to standing. She homed in on standing as she found it to be a definitive element of her experience as a guard, physically taxing and particular to the guards' job at the museum. The phrases were selected by the guards and transferred onto the garments in their own handwriting. Hammer guards will wear the blazers by Auerbach throughout the museum this winter.

CONTEMPLATIVE ART VIEWING

SATURDAY, DECEMBER 3, 1PM

Mindfulness educator **Mitra Manesh** will lead a one-hour mindful art-viewing experience of the Armand Hammer Collection. This contemplative session is designed to deepen the experience of art exploration by focusing on the suspension of judgment and creating an opportunity for art, artist, and self to be considered anew.

HARRELL FLETCHER AND THE EMERGENCE OF ART AND SOCIAL PRACTICE

WEDNESDAY, FEBRUARY 22, 7PM

Hammer Public Engagement artist **Harrell Fletcher** has worked collaboratively and individually on a variety of socially engaged, interdisciplinary projects for over a decade. His projects include *The American War*, a traveling exhibition, and *Learning to Love You More*, a participatory website and book co-created with Miranda July. Fletcher's current project with collaborator Adam Moser will document a year at the Hammer in the vernacular of a high school yearbook. Until the end of March, when visitors come to the museum they may have their portraits taken at the Front Desk to be included in the Yearbook. Visitor photos will be posted on www.hammyearbook.com.

OPPOSITE ABOVE, LEFT-RIGHT: HIERONYMUS WIERIX. *MADONNA AND CHILD ON A CRESCENT MOON* (DETAIL), ENGRAVING. COLLECTION UCLA GRUNWALD CENTER FOR THE GRAPHIC ARTS, HAMMER MUSEUM. PURCHASED WITH FUNDS PROVIDED BY THE FRIENDS OF THE GRAPHIC ARTS. PHOTOGRAPHY BY ROBERT WEDEMEYER. GLENN KAINO. *UNTITLED (RICKY JAY)*, 2010, PLAYING CARDS. DIMENSIONS VARIABLE. HAMMER MUSEUM, LOS ANGELES. GIFT OF THE ARTIST AND LA><ART, IN HONOR OF RICKY JAY. INSTALLATION VIEW AT THE HAMMER MUSEUM, LOS ANGELES. OCTOBER 15, 2011–JANUARY 22, 2012. PHOTOGRAPHY BY BRIAN FORREST. ABOVE: *UNITED WE STAND*, PUBLIC ENGAGEMENT PROJECT BY LISA ANNE AUERBACH.

Take a
Stand



HAMMER CONVERSATIONS

ANGELA DAVIS & ROBIN LEVI

THURSDAY, DECEMBER 1, 7PM

For more than four decades **Angela Davis** has been one of the most influential activists and scholars involved in the social justice movement. Her recent work has focused on incarceration and the criminalization of communities that are most affected by poverty and racial discrimination. Her recent books are *Abolition Democracy: Beyond Prisons, Torture, and Empire* and *Are Prisons Obsolete?* **Robin Levi** is the human rights director at Justice Now. While a staff attorney at the Women's Rights Division of Human Rights Watch, she documented sexual abuse of women in U.S. state prisons. She has recently co-edited a book of essays by prisoners called *Inside This Place, Not of It: Narratives from Women's Prisons*. A book signing will follow the conversation.

ABOVE, LEFT-RIGHT: ANGELA DAVIS; ROBIN LEVI, HILTON ALS (PHOTO: HILTON ALS), KARA WALKER (PHOTO: CHUCK CLOSE), AMIRI BARAKA, AND KELLIE JONES.

HILTON ALS & KARA WALKER

SUNDAY, DECEMBER 11, 2PM

Hilton Als is a theater critic for the *New Yorker* and the author of *Women* and *Justin Bond/Jackie Curtis*. He received a Guggenheim fellowship for creative writing in 2000 and has taught at Smith College, Wesleyan, and Yale University. In 2010 he co-curated *Self-Consciousness* at the Veneklasen Werner Gallery in Berlin. Artist **Kara Walker** is known for her candid investigation of race, gender, sexuality, and violence through silhouetted figures. Her work has appeared in numerous exhibitions worldwide. In 2007 the major survey exhibition *Kara Walker: My Complement, My Enemy, My Oppressor, My Love* premiered at the Walker Art Center, Minneapolis, before traveling to several venues, including the Hammer. Walker was also the first artist to be featured in the museum's Hammer Projects series in 1999.

Also on December 11, Hammer Screenings: Videos by Kara Walker, see page 20.

AMIRI BARAKA & KELLIE JONES

SUNDAY, JANUARY 8, 2PM

Now Dig This! curator **Kellie Jones** and her father—renowned poet, playwright, and activist **Amiri Baraka**—discuss their collaboration on Jones's book *EyeMinded: Living and Writing Contemporary Art*, which investigates various perspectives on art making throughout different generations. Jones is associate professor in the Department of Art History and Archaeology at Columbia University. Her writings have appeared in *NKA*, *Artforum*, *Flash Art*, *Atlantica*, *Third Text*, and numerous catalogues. Baraka is the author of more than 40 books of essays, poems, drama, and music history and criticism. The former Poet Laureate of New Jersey, he has received numerous honors including fellowships from the Guggenheim Foundation and the National Endowment of the Arts, the PEN/Faulkner Award, and an Obie Award for his play *Dutchman* (1963). A book signing will follow the conversation.

In conjunction with the exhibition *Now Dig This! Art and Black Los Angeles 1960–1980*.

HAMMER FORUM

This ongoing series of timely, thought-provoking events addresses current social and political issues.

Hammer Forum is made possible, in part, by Bronya and Andrew Galef.

REBUILDING THE DREAM FOR THE 99%

TUESDAY, JANUARY 24, 7PM

Former White House adviser **Van Jones** will discuss his new solution-oriented movement to rebuild America for the 99% who find the American dream increasingly unattainable. One of *Time* magazine's "100 Most Influential People in the World," Jones will present his 10-point plan to fix the economy, create jobs, and restore America's democracy. Jones, who is the author of the *New York Times* best-seller *The Green Collar Economy*, will also address how the Occupy Wall Street movement and related protests will affect the 2012 elections.

CORPORATE POWER AND SOCIAL RESPONSIBILITY

WEDNESDAY, FEBRUARY 8, 7PM

With demonstrations against corporations erupting around the world, Pulitzer Prize-winning *Wall Street Journal* reporter **Ellen Schultz**, author of *Retirement Heist: How Companies Plunder and Profit from the Nest Eggs of American Workers*, joins us to discuss corporate greed. Joining her is Vermont Law School professor **Jennifer Taub**, whose research focuses on corporate social responsibility, shareholders' rights, and consumer protection. A former VP and counsel for Fidelity Investments, Taub's latest book is *The Great Betrayal: How Washington Bailed Out Wall Street but Left Main Street Underwater*.

Hammer Forum is moderated by **Ian Masters**, journalist, author, screenwriter, documentary filmmaker, and host of the radio programs *Background Briefing*, Sundays at 11AM, and *The Daily Briefing*, Monday through Thursday at 5PM, on KPFK 90.7 FM.

HAMMER

CALENDAR

Public programs are made possible by Hammer Members and the generosity of Bronya and Andrew Galef, Good Works Foundation and Laura Donnelley, and an anonymous donor.

HAMMER MUSEUM PROGRAMS ARE FREE TO THE PUBLIC.

HAMMER MEMBERS RECEIVE PRIORITY SEATING AT PROGRAMS.

GROUP TOURS OF HAMMER EXHIBITIONS WITH UCLA STUDENT EDUCATORS ARE AVAILABLE THURSDAYS AT 6:15PM.

DECEMBER

1 Thu 11am–6pm	Hammer Screenings (p. 20) <i>Untitled (World AIDS Day)</i>
7pm	Hammer Conversations (p. 12) Angela Davis & Robin Levi
3 Sat 1pm	Public Engagement (p. 11) Contemplative Art Viewing
4 Sun 12pm	Sunday Afternoons for Kids (p. 22) 826LA DIY Holiday Concert
2pm	Hammer Lectures (p. 18) You’ve Come a Long Way Baby
8 Thu 7pm	Hammer Lectures (p. 18) race, pLAce, and bLack L.A.
11 Sun 11am	Family Flicks Film Series (p. 21) <i>Meet Me in St. Louis</i>
11am–2pm	Hammer Screenings (p. 20) Videos by Kara Walker
2pm	Hammer Conversations (p. 12) Hilton Als & Kara Walker
3–5pm	Hammer Screenings (p. 20) Videos by Kara Walker
13 Tue 7pm	Hammer Lectures (p. 18) Saul Bass: A Life in Film & Design
14 Wed 7pm	Hammer Readings: Some Favorite Writers (p. 19) Literary Los Angeles and the L.A. Review of Books
15 Thu 7pm	Hammer Presents (p. 16) Jason Moran

JANUARY

6 Fri 7pm	Closing Weekend Kick-Off (p. 5) <i>Now Dig This!</i>
7 Sat	Free Family Day (p. 5) <i>Now Dig This!</i>
8 Sun 11am	Family Flicks Film Series (p. 21) <i>Babies</i>
2pm	Hammer Conversations (p. 13) Amiri Baraka & Kellie Jones
12 Thu 7pm	UCLA Department of Art Lectures (p. 17) Jeff Wall
19 Thu 7pm	Hammer Presents (p. 16) Dale Radio Live!
22 Sun 12pm	Sunday Afternoons for Kids (p. 22) Tabletop Moviemaking with iPads, iPods, and iPhones
24 Tue 7pm	Hammer Forum (p. 13) Rebuilding the Dream for the 99%
26 Thu 7pm	Hammer Presents (p. 16) <i>Walking Tall</i>
29 Sun 2pm	Hammer Presents (p. 16) Eleanor Antin’s Before the Revolution
7pm	Hammer Presents (p. 16) Eleanor Antin’s Before the Revolution
31 Tue 7pm	Hammer Readings: Some Favorite Writers (p. 19) Edmund White

TICKETING

Free tickets are required for program entry and are available from the Billy Wilder Theater Box Office. One ticket per person. Hammer Members are entitled to priority seating for all public programs subject to availability. This does not guarantee seating, and we recommend all attendees arrive at least a half hour early for programs they wish to attend.

FEBRUARY

1 Wed 7pm	Hammer Readings: New American Writing (p. 19) Samantha Hunt & Ben Marcus
2 Thu 7pm	UCLA Department of Art Lectures (p. 17) Mari Eastman
5 Sun 2pm	Hammer Lectures (p. 18) Griselda Pollock
8 Wed 7pm	Hammer Forum (p. 13) Corporate Power and Social Responsibility
9 Thu 7pm	Hammer Readings: Poetry (p. 19) Sarah Lindsay
12 Sun 11am	Family Flicks Film Series (p. 21) <i>Jason and the Argonauts</i>
12pm	Sunday Afternoons for Kids (p. 22) Time Travel through Movement Exploration—Blast Off!
14 Tue 8pm	Hammer Presents (p. 17) Dirty Looks: Long Distance Love Affairs
16 Thu 7pm	Hammer Screenings (p. 20) Yael Bartana and Dani Gal
22 Wed 7pm	Public Engagement: Artist Talk (p. 11) Harrell Fletcher and the Emergence of Art and Social Practice
23 Thu 7pm	Hammer Presents (p. 17) Sanford Biggers: Moon Medicine
29 Wed 7pm	UCLA Department of Art Lectures (p. 17) Evan Holloway

MINDFUL AWARENESS

EVERY THURSDAY 12:30PM

Mindful Awareness is the moment-by-moment process of actively and openly observing one’s physical, mental, and emotional experiences. Mindfulness has scientific support as a means to reduce stress, improve attention, boost the immune system, reduce emotional reactivity, and promote a general sense of health and well-being.

The free weekly drop-in sessions take place in the comfortable seats of the Billy Wilder Theater and are open to all who are interested in learning how to live more presently in life. No special clothing is required, and participants are welcome to stay for 5 minutes or enjoy the entire 30-minute session.

Sessions are led by instructors from the UCLA Mindful Awareness Research Center. Visit www.marc.ucla.edu to learn more.

HAMMER PRESENTS

JASON MORAN

THURSDAY, DECEMBER 15, 7PM

2010 MacArthur Fellow **Jason Moran** is a pianist, composer, and bandleader who mines a variety of musical styles to create adventurous, genre-crossing jazz performances. Moran marries established classical, blues, and jazz techniques with the musical influences of his generation, including funk, hip-hop, and rock. His albums include *Modernistic*, *Same Mother*, and *Ten*. The performance will be followed by a discussion with **Guthrie Ramsey**, professor of music at the University of Pennsylvania, exploring the theme of migration and music.

In conjunction with the exhibition *Now Dig This! Art and Black Los Angeles 1960–1980*.

DALE RADIO LIVE!

THURSDAY, JANUARY 19, 7PM

Dale Seever (aka **James Bewley**) returns to L.A. for a live taping of his cult-hit podcast, *Dale Radio*. Dale welcomes artist and Internet celebrity **Marc Horowitz** of ineedtostopsoon.com and entertainment legend **Mary Lou Metzger** (*The Lawrence Welk Show*). The program will feature live music by the **UCLA Jazz Ensemble** and onstage mixology by **Daniel Lee**.



WALKING TALL

THURSDAY, JANUARY 26, 7PM

Artists **Maren Hassinger**, **Senga Nengudi**, and **Ulysses Jenkins** continue to investigate *Kiss*, performed in the 1970s and reimagined in October 2011 to celebrate the opening of the Hammer's *Now Dig This!*. Special guests, including artists who have worked with the trio since the 1970s, participate in this exciting iteration. Directed by Hassinger to accentuate the positivity and joyfulness of life, each guest offers a unique contribution to the performance. A meditation on pride and self-confidence, *Walking Tall* will culminate in an interactive audience experience.

ELEANOR ANTIN'S
BEFORE THE REVOLUTION

SUNDAY, JANUARY 29, 2PM AND 7PM

Eleanor Antin's *Before the Revolution* explores Antin's imaginary character Eleanora Antinova, an African American ballerina trying to make it in the great modernist Russian company of Diaghilev's Ballets Russes. Performed by actors who manipulate Antin's original life-scale puppets, the play incorporates a vaudeville sensibility into performance art, and represents a daring attempt to consider race and gender in relation to artistic mastery. Antin directs the production along with **Robert Castro**.

The above programs are part of the Pacific Standard Time Performance and Public Art Festival.

The Pacific Standard Time Performance and Public Art Festival is organized by LA+ART and the Getty Research Institute, and made possible by grants from the Getty Foundation.

DIRTY LOOKS: LONG
DISTANCE LOVE AFFAIRS

TUESDAY, FEBRUARY 14, 8PM

Dirty Looks is a New York-based roaming screening series, a salon of influences, and an open platform for inquiry, discussion, and debate. This program is a love letter passionately proposing the curious coupling of East Coast and L.A. queer experimental filmmakers of yesterday and today. Expect obsession, permuted notions of sex, and violent whimsy. Curated by **Bradford Nordeen** and **Darin Klein**, and featuring work by **Cecilia Dougherty**, **Deanna Erdmann**, **Rhys Ernst**, **Glen Fogel**, **Mariah Garnett**, **Jonesy**, **Dani Leventhal**, **Charles Ludlam**, **Narcissister**, **Luther Price**, and **Michael Robinson**. Cash bar at 7pm, screening at 8pm. A discussion will follow the screening.

SANFORD BIGGERS:
MOON MEDICINE

THURSDAY, FEBRUARY 23, 7PM

Moon Medicine is an aural and optical experiment conducted by interdisciplinary artist **Sanford Biggers**. His live work, by turns troubling and inspiring, weaves found images of punk, funk, film noir, sci-fi, traditional Samoan dance, and Buddhism with original video content and improvised turntableism and veejaying. The result is an evocative concert that is as much jam session as it is a performative film screening.

BACKGROUND: JONESY. STILL FROM *BEAUTY MUST SUFFER*, 2010. DIGITAL VIDEO, COLOR, SOUND. 5:23 MIN. BOTTOM, LEFT-RIGHT: JASON MORAN, DALE SEEVER (AKA JAMES BEWLEY), ELEANOR ANTIN, AND SANFORD BIGGERS. OPPOSITE ABOVE, LEFT-RIGHT: JEFF WALL AND MARI EASTMAN (PHOTO: MICHAEL WELLS).

UCLA DEPARTMENT
OF ART LECTURES

The UCLA Department of Art's visiting lecture series is made possible through the generous support of the William D. Feldman Family Endowed Art Lecture Fund.

JEFF WALL

THURSDAY, JANUARY 12, 7PM

Jeff Wall is among the most important and influential artists working today. His work has been the subject of major retrospectives at the Museum of Contemporary Art, Los Angeles; Schaulager, Basel; Tate Modern, London; and the Museum of Modern Art, New York. A group of his works was shown at the Hammer in 2003. He lives in Vancouver, Canada.

MARI EASTMAN

THURSDAY, FEBRUARY 2, 7PM

Painter **Mari Eastman's** solo exhibitions include those at Cherry and Martin, Los Angeles; Emily Tsingou Gallery, London; Sies + Hoeke, Düsseldorf; and Spruth and Magers Projekts, Munich. She has also participated in group exhibitions at Los Angeles Contemporary Exhibitions; the Museum of Contemporary Art, Los Angeles; Orange County Museum of Art; and the Hammer. She is a frequent visiting lecturer in the UCLA Department of Art.

EVAN HOLLOWAY

WEDNESDAY, FEBRUARY 29, 7PM

Evan Holloway has had recent solo exhibitions at Marc Foxx Gallery, Los Angeles; Harris Lieberman, New York; the Approach, London; and the Pomona College Museum of Art. His work has appeared in numerous group exhibitions including, *All of this and nothing* at the Hammer; *Moby Dick and The Wizard of Oz* at CCA Wattis Institute for Contemporary Arts, San Francisco; and *The Uncertainty of Objects and Ideas: Recent Sculpture* at the Hirshhorn Museum and Sculpture Garden, Washington, D.C.

HAMMER LECTURES

YOU’VE COME A LONG WAY BABY*

SUNDAY, DECEMBER 4, 2PM

Pioneering artists **Barbara McCullough** and **Sheila Levrant de Bretteville**, curator **Josine Ianco-Starrels**, and gallerist **Suzanne Jackson** gather to reflect on gender politics in art, then and now. Moderated by art historian **Bridget Cooks**.

In conjunction with the exhibition *Now Dig This! Art and Black Los Angeles 1960–1980*.

*Title is the subtitle of the exhibition *The Sapphire Show* curated by Suzanne Jackson at Gallery 32 in 1970 and also a slogan from an ad for Virginia Slims cigarettes at that time.

race, pLace, and bLack L.A.

THURSDAY, DECEMBER 8, 7PM

Scholars **Robin D. G. Kelley** (USC/UCLA), **Jacqueline Stewart** (Northwestern University), and **Daniel Widener** (UCSD) discuss black artists in Southern California through history, and the role of geography, migration, and economics in creating the potent mix that produced the black arts movement. Moderated by *Now Dig This!* curator **Kellie Jones**.

In conjunction with the exhibition *Now Dig This! Art and Black Los Angeles 1960–1980*.

SAUL BASS: A LIFE IN FILM & DESIGN

WITH PAT KIRKHAM

TUESDAY, DECEMBER 13, 7PM

Saul Bass was the designer of iconic titles and posters for films by Alfred Hitchcock and Otto Preminger, among others; the creator of dynamic logos and advertising campaigns for clients such as Quaker Oats and United Airlines; and an Academy Award winning filmmaker. **Pat Kirkham**, co-author with **Jennifer Bass** of *Saul Bass: A Life in Film and Design*, explores the world of one of the 20th century’s most influential visual innovators. A book signing will follow the program.

GRISELDA POLLOCK

SUNDAY, FEBRUARY 5, 2PM

TOO EARLY AND TOO LATE: THE SCULPTURAL DISSOLUTIONS OF ALINA SZAPOCZNIKOW IN AND OUT OF TIME

Scholar **Griselda Pollock** is internationally known for her work on feminist studies in the visual arts and cultural theory. Her current work on art as a form of inscription and transformation of traumatic legacies will appear in the forthcoming *After-Images/After-Effects: Trauma and Aesthetic Inscription/Encryption in the Virtual Feminist Museum*.

In conjunction with the exhibition *Alina Szapocznikow: Sculpture Undone, 1955–1972*.

HARRELL FLETCHER AND THE EMERGENCE OF ART AND SOCIAL PRACTICE

WEDNESDAY, FEBRUARY 22, 7PM

See page 11.



SOME FAVORITE WRITERS

This series of readings is organized by **Mona Simpson**, author of *My Hollywood*, *Anywhere But Here*, and *Off Keck Road*. Readings are followed by discussions with Simpson.

Enjoy complimentary coffee and tea at all Hammer readings.

Sponsored by the UCLA Department of English and Friends of English.

LITERARY LOS ANGELES & THE LOS ANGELES REVIEW OF BOOKS WEDNESDAY, DECEMBER 14, 7PM

Mona Simpson, **Tom Lutz**, **Matthew Specktor**, and **Lisa Jane Persky** will present a lively discussion about writing, publishing, and the emergence of Los Angeles as a true capital for literature. The conversation will address the vitality and urgency of cultural criticism, the ways in which the city and its literary institutions (like the *Los Angeles Review of Books*) offer a unique vantage for the 21st century, and ways in which readers and writers alike might thrive in this new landscape.

EDMUND WHITE TUESDAY, JANUARY 31, 7PM

Edmund White is the author of many novels, including *A Boy’s Own Story*, *The Beautiful Room Is Empty*, *The Farewell Symphony*, and, most recently, *Hotel de Dream*. His nonfiction includes *City Boy* and other memoirs; *The Flâneur*, about Paris; and literary biographies and essays. White lives in New York and teaches at Princeton.

NEW AMERICAN WRITING

This series of contemporary fiction and poetry readings is organized by **Benjamin Weissman**, author of two books of short fiction, most recently *Headless*, and professor of creative writing at Art Center College of Design and Otis College of Art and Design.

This series is made possible, in part, with support from Bronya and Andrew Galef.

SAMANTHA HUNT & BEN MARCUS WEDNESDAY, FEBRUARY 1, 7PM

Samantha Hunt is the author of *The Seas* and *The Invention of Everything Else*, a novel about inventor Nikola Tesla. Hunt’s work has appeared in the *New Yorker*, *McSweeney’s*, *A Public Space*, *Tin House*, *Cabinet*, and *Blind Spot*, among others. She teaches at the Pratt Institute in Brooklyn. **Ben Marcus** is the author of *Notable American Women* and *The Age of Wire and String*. His awards include three Pushcart Prizes, a Whiting Writers Award, and a National Endowment for the Arts grant. Marcus is a professor of creative writing at Columbia University.

POETRY

This series of readings is organized and hosted by **Stephen Yenser**, poet and professor at UCLA and author of *A Boundless Field: American Poetry at Large* and *Blue Guide*.

Sponsored by the UCLA Department of English and Friends of English.

SARAH LINDSAY THURSDAY, FEBRUARY 9, 7PM

Sarah Lindsay’s books of poetry include *Primate Behavior*, a finalist for the National Book Award, *Mount Clutter*, and *Twigs and Knucklebones*. Her work has appeared in the *Atlantic*, the *Georgia Review*, the *Kenyon Review*, the *Paris Review*, *Parnassus*, and *Yale Review*. She holds an MFA in creative writing from the University of North Carolina-Greensboro and is a recipient of the J. Howard and Barbara M.J. Wood Prize.

OPPOSITE BACKGROUND: SAUL BASS. MOVIE POSTER FOR *NINE HOURS TO RAMA*, 1963 (DETAIL). ABOVE, LEFT–RIGHT: EDMUND WHITE (PHOTO: FRANK MULLANEY), SAMANTHA HUNT (PHOTO: MARION EFTLINGER), BEN MARCUS (PHOTO: JOYCE RAVID), AND SARAH LINDSAY.

HAMMER SCREENINGS

UNTITLED

THURSDAY, DECEMBER 1, 11AM-6PM

Presented in conjunction with World AIDS Day/Day With(out) Art by Visual AIDS

Untitled presents a nonlinear montage of footage to conjure up the passionate activism sparked by the early years of the AIDS crisis. Created by artist **Jim Hodges** and filmmakers **Carlos Marques da Cruz** and **Encke King**, *Untitled* melds together media from a multitude of sources including archival activist footage, news broadcasts, and popular TV and film. By juxtaposing fractious scenes from the last few turbulent decades, *Untitled* presents a provocative reflection on an era when political protest and personal existence converged.

(2011, Dir. Jim Hodges, Carlos Marques da Cruz, Encke King. 60 min)

VIDEOS BY KARA WALKER

SUNDAY, DECEMBER 11, 11AM-2PM, 3-5PM

Kara Walker has risen to international prominence for visually stunning works on paper and installations that challenge conventional narratives of American history and the antebellum South. With biting humor, she comments on race, slavery and liberation, sexual attraction and exploitation, discrimination, and modernity. This program presents nine videos by Walker, including three new works. A listing of all videos is available at hammer.ucla.edu.

Yael BARTANA & DANI GAL

THURSDAY, FEBRUARY 16, 7PM

Polish artist and Holocaust survivor Alina Szapocznikow often reflected on the ephemeral condition of human life in her work. This program presents the work of two contemporary filmmakers who provide context to her experiences. In Dani Gal's *Nacht und Nebel* (*Night and Fog*, 2011, 22 min.), policemen transport the ashes of notorious Nazi war criminal Adolf Eichmann. Yael Bartana explores an imaginary world in which Polish Jews form a fictional Jewish Renaissance Movement in her Polish Trilogy: *Mary Koszmary* (*Nightmares*, 2007, 11 min.); *Mur i Wieża* (*Wall and Tower*, 2009, 15 min.); and *Zamach* (*Assassination*, 2011, 35 min.).

In conjunction with the exhibition *Alina Szapocznikow: Sculpture Undone, 1955-1972*.

ABOVE, BACKGROUND: KARA WALKER. STILL FROM *FALL FROM GRACE, MISS PIPPI'S BLUE TALE*, 2011. DVD VIDEO (COLOR, AUDIO). 17 MIN. COURTESY OF SIKKEMA JENKINS & CO. OPPOSITE, LEFT-RIGHT: STILL OF SPENCER TRACY (RIGHT) IN *THE POWER AND THE GLORY* (1933), DIRECTED BY WILLIAM K. HOWARD. THE FILM HAS BEEN RESTORED BY THE UCLA FILM & TELEVISION ARCHIVE. STILL FROM *MEET ME IN ST. LOUIS*, 1944. PHOTO: © MGM. COURTESY MGM/PHOTOFEST.



UCLA FILM & TELEVISION ARCHIVE

The Billy Wilder Theater is also the home of the UCLA Film & Television Archive's renowned cinémathèque.

WINTER HIGHLIGHT

UCLA Film & Television Archive and Hugh M. Hefner Classic American Film Program present

SPENCER TRACY: THAT NATURAL THING JANUARY – FEBRUARY 2012

The Archive salutes actor Spencer Tracy, whose decades-long career—coming between the florid acting of the silent era and the Method acting made famous two decades later—bridged both periods with a uniquely interiorized style and a persona that came to epitomize a new type: the morally introspective, spiritually embattled everyman. The series includes such films as *The Power and the Glory* (1933, Dir. William K. Howard, 76 min.), *Adam's Rib* (1949, Dir. George Cukor, 101 min.), and *Inherit the Wind* (1961, Dir. Stanley Kramer, 128 min.).

To purchase tickets or for more information about the Archive's screenings, visit cinema.ucla.edu or call (310) 206-3456.



Family Flicks FILM SERIES

The UCLA Film & Television Archive and the Hammer Museum have teamed up for a matinee screening series of new and classic family-friendly films from around the world.

MEET ME IN ST. LOUIS

SUNDAY, DECEMBER 11, 11AM Recommended for ages 6+

In this musical slice of Americana circa 1903, Margaret O'Brien steals the show as Tootie, a pint-sized town booster who dreams about St. Louis's coming World's Fair. The always-enchanted Judy Garland performs memorable renditions of "Have Yourself a Merry Little Christmas" and "The Trolley Song."

(1945, Dir. Vincente Minnelli, 35mm, color, 113 min.)

BABIES

SUNDAY, JANUARY 8, 11AM Recommended for ages 3+

This beautifully produced documentary introduces us to four infants in four countries, showing cultural variations in child rearing along with those features of babyhood common to us all. Facing daily trials and triumphs, these bundles of joy become scene-stealing movie stars of the first order!

(2010, Dir. Thomas Balmès, 35mm, color, 79 min.)

JASON AND THE ARGONAUTS

SUNDAY, FEBRUARY 12, 11AM Recommended for ages 6+

Don Chaffey's retelling of this ancient myth finds heroic Jason sailing the world in search of the magical "golden fleece." On his quest, he must battle mystical, monstrous creatures that stand in his way, conjured by the magic hand of special-effects wizard Ray Harryhausen.

(1963, Dir. Don Chaffey, 35mm, color, 104 min.)

Family Flicks is co-presented with the UCLA Film & Television Archive.

Family Flicks is made possible, in part, through the generosity of supporters and friends of the Hammer Museum's Kids' Art Museum Project (K.A.M.P). Additional support is provided by the Westwood Neighborhood Council.

HAMMER
kids

SUNDAY AFTERNOONS FOR KIDS

The Hammer’s free collaborative workshops, presented with 826LA, are designed for groups of up to 20 students. Reservations are encouraged. **Please visit workshops.826LA.org or call 310-305-8418.**

826LA DIY HOLIDAY CONCERT

SUNDAY, DECEMBER 4, 12-2PM

In this workshop, participants develop songwriting forms and techniques such as rhyme, rhythm, and meter with the help of 826LA volunteers and musicians from the independent Los Angeles record label **Hit City U.S.A.** The workshop will culminate in the writing of holiday songs and an impromptu concert. **Ages 8–13**

TABLETOP MOVIEMAKING WITH
iPADS, IPODS, AND IPHONES

SUNDAY, JANUARY 22, 12-2PM

Salvador Dalí and Orson Welles spent time creating diorama worlds, inventing stories, and performing them using miniature sets and tiny characters. Workshop attendees will use the same techniques to put together a short-film festival using a Tabletop Moviemaking kit and a variety of Apple iOS devices. Instructor **Brick Maier** developed tabletop moviemaking while on a Fulbright grant in Dublin in 2004. **Ages 10–14**

TIME TRAVEL THROUGH MOVEMENT
EXPLORATION—BLAST OFF!

SUNDAY, FEBRUARY 12, 12-2PM

Dance specialist **Cynthia Miltenberger** will help workshop participants travel forward and backward through time by employing the principles of body and movement awareness. Using writing, movement, and outer-space sounds, students will discover how to transport themselves to different times and places. **Ages 7–10**

Hammer Kids and Family Flicks are made possible through the generosity of K.A.M.P. (Kids’ Art Museum Project) supporters and friends. K.A.M.P. is an annual family fundraiser.



THANKS TO OUR SUPPORTERS AND MEMBERS

We are grateful to numerous individuals, foundations, corporations, and government agencies for their crucial support of the Hammer’s exhibitions, program series, and special projects. Thanks to the generosity of our donors and members, the Hammer Museum is able to continue to offer a full slate of free public programs.

We thank the following people and organizations for their generous support of the Hammer Museum from October 2010 to October 2011.

\$100,000+ The Annenberg Foundation The Brotman Foundation of California Marcy Carsey Creative Exchange Agency Getty Foundation Erika Glazer The James Irvine Foundation Alice and Nahum Lainer Susan and Larry Marx Susan Bay Nimoy and Leonard Nimoy Brenda Potter Anthony & Jeanne Pritzker Family Foundation Carole Bayer Sager Susan Smalley and Kevin Wall David Teiger	Lannan Foundation Matthew Marks Gallery Heidi and Erik Murkoff NBCUniversal Lawrence and Lee Ramer Shaun Caley Regen Lynda and Stewart Resnick Kristin Rey and Michael Rubel Sharon and Nelson Rising Ronnie and Vidal Sassoon Christina and Mark Siegel Julie and Barry Smooke Catharine and Jeffrey Soros Laila and Mehran Taslimi Kathinka and John Tunney Wasserman Foundation The Wynford Group, Inc. Sam and Helen Zell Marisa and Jeremy Zimmer	U.S. Trust Kimm and Alessandro Uzielli Gordon VeneKlasen Versace USA, Inc. Ron Watson Gail and Irv Weintraub Frederick R. Weisman Philanthropic Foundation Wells Fargo Foundation	\$2,500—\$4,999 Leslie Belzberg Alain Berdouare Claire Birnbaum Suzanne Brown The Burrows Foundation, Inc. Philippa Calnan Cherry and Martin Jeanne and Arthur Cohen Leslie and Jonathan Fram The Philip and Irene Toll Gage Foundation Gibson, Dunn & Crutcher LLP Homeira and Arnold Goldstein Lenore and Bernard Greenberg Jill Greenberg and Robert Green Bobbie and Robert Greenfield Adam Gross Groupon Bob Gunderman and Sarah Walker Tom Hanks and Rita Wilson Harman Family Foundation Hauser & Wirth Jewish Federation of Cleveland Imara Jones Bettina Korek Kroha/Casner Family Foundation Margo Leavin Joan and Stuart Levin Burt Levitch Jay L. Luchs Jennifer and Temil Marmon Lauren McCollum and Tatiana Botton Merle and Gerald Measer Cindy Miscowski Julie Miyoshi The Claire and Theodore Morse Foundation Aamir Mufti Amber Busuttill Mullen and Christopher Mullen Thao Nguyen Joyce and Michael Ostin Catherine Partridge Astrid and Howard Preston Jane Siegal Thomas Solomon The TR Family Trust Brenda Thompson Raun Thorp and Brian Tichenor Deborah and David Trainer Westwood Neighborhood Council Young Presidents’ Organization—Los Angeles
\$50,000—\$99,999 Amy Adelson and Dean Valentine Herta and Paul Amir Ruth and Jake Bloom The David Bohnett Foundation The Broad Art Foundation Susie Crippen Asher Delug Rosette Varda Delug Gagosian Gallery The Horace W. Goldsmith Foundation Good Works Foundation and Laura Donnelley Susan Steinhauser and Daniel Greenberg/ The Greenberg Foundation GUESS? Foundation Linda and Jerry Janger Kayne Foundation Los Angeles County Board of Supervisors through the Los Angeles County Arts Commission Moss Foundation Alisa and Kevin Ratner Eva and Bob Shaye Darren Star The Andy Warhol Foundation for the Visual Arts	\$10,000—\$24,999 American Express ARTIS Nancy Berman Blum & Poe Heika Burnison Ina Coleman and Alan Wilson Nelly and Moises Cosio Esther Cynamon and Nino Mier / Food + Lab Dana Delany Carolyn and John Diemer Waldo Fernandez FOX Group The David Geffen Foundation The Rosalinde and Arthur Gilbert Foundation Rachel Griffiths and Andrew Taylor Susan Hancock Alan Hergott and Curt Shepard The Audrey and Sydney Irmas Charitable Foundation Steven Jensen Jerry and Terri Kohl Family Foundation L&M Arts Eugenio Lopez Samantha Magowan and Colin Magowan Marmol Radziner & Associates Katie McGrath and JJ Abrams John McIlwee and Bill Damaschke MMC Events Joni Moisant Weyl and Sidney Felsen Mondriaan Foundation The Kenneth T. and Eileen L. Norris Foundation Eileen Harris Norton Foundation Occidental Petroleum Corp Oprah Winfrey Network Kelly and Jeff Poe PUMA Stacy and John Rubeli Doris Salcedo Shirley and Ralph Shapiro V. Joy Simmons, M.D. The Fran & Ray Stark Foundation Swarovski The Buddy Taub Foundation	\$5,000—\$9,999 Nina and Daniel Aloni Anatman Foundation Catherine G. Benkaim and Barbara Timmer J. Ben Bourgeois James-Keith (JK) Brown and Eric Diefenbach Richard Buckley and Tom Ford Blake Byrne City National Bank Margit and Lloyd E. Cotsen Kathi and Gary Cypres Lori DeWolfe Steve Fink Andrew Franklin Susan and David Gersh Agnes Gund Randal Haworth Tara and Eric Hirshberg Maria D. Hummer and Robert H. Tuttle IKEA Burbank JKW Foundation Thomas Kennedy and John Morace Michael Kohn Gallery Diantha Lebenzon and Maya McLaughlin LivingSocial LLWW Foundation Loeb & Loeb LLP MAC Cosmetics Iris Z. Marden Juliet McIver Joy and Jerry Monkash Family Foundation Amy Murphy and Michael Maltzan Gail Mutrux and Tony Ganz Angella and David Nazarian Mariana Pfelzer Joel Portnoy Dallas Price-Van Breda and Bob Van Breda Amy and George Roland Shawn and Natasha Sedaghat Jennifer Simchowitz Sotheby’s Thaddeus Stauber and Tracy O’Brien Shidan Taslimi Grazka Taylor Mimi and Warren Techentin Carolyn and Gregory Trattner Jean Edouard van Praet Sally and David Vena Christopher Walker Hope Warschaw and John Law Sara Weinheimer Pamela West Winkler Family Foundation Orna and Keenan Wolens Andrea Woodner	...and those donors who wish to remain anonymous.

GALA IN THE GARDEN

On September 24, 2011, artists, gallerists, collectors, philanthropists, and entertainment figures gathered at the Hammer Museum's ninth annual Gala in the Garden. The Gala, which raised over \$1.7 million for the Hammer's renowned exhibitions and public programs, was held in the museum's elegant outdoor courtyard under a lighting installation by artist **Jorge Pardo**. This year's honorees were artist and UCLA faculty member **Lari Pittman** and cartoonist, writer, and creator of *The Simpsons* **Matt Groening**. The event was co-chaired by **Rosette Delug** and **Darren Star** and featured tribute speeches by art critic **Christopher Knight** for Pittman and actor **Neil Patrick Harris** for Groening. Guests dined on cuisine by **Suzanne Goin** of Lucques and enjoyed a special performance by Grammy winner **Bruno Mars**. This evening was made possible with the generous support of **CXAART**



1) DIRECTOR ANN PHILBIN AND HONOREE MATT GROENING 2) HONOREE LARI PITTMAN AND TRIBUTE SPEAKER CHRISTOPHER KNIGHT 3) JACK BLACK, TANYA HADEN, VIVECA PAULIN-FERRELL, AND WILL FERRELL 4) GALA CHAIR ROSETTE DELUG 5) DAVID BURTKA, GALA CHAIR DARREN STAR, AND TRIBUTE SPEAKER NEIL PATRICK HARRIS 6) KATE MULLEAVY, ELLIOTT HUNDLEY, LAURA MULLEAVY, ALPHAEUS TAYLOR, CATHY OPIE 7) DANNA AND ED RUSCHA 8) CAROLE BAYER SAGER, ALANA STEWART, MARGIE PERENCHIO, JERRY MOSS, KELLY DAY 9) BROOKE KANTER AND ALISA RATNER 10) DANA DELANY 11) CHARLES GAINES AND DOUGLAS FOGLE 12) RUTH BLOOM, JAKE BLOOM, MARK CANTON, ANNA MARIA MOSTROM 13) DORI AND CHARLES MOSTOV 14) ANN PHILBIN AND STANLEY HOLLANDER 15) BRUNO MARS 16) JULIE MIYOSHI, DAVID LACHAPPELLE, CARMEN SCOTT, STEVEN PRANICA 17) PETER BENEDEK AND JEREMY ZIMMER 18) SUSAN AND LEONARD NIMOY 19) JOHN AND KATHINKA TUNNEY 20) LISA LOVE 21) MARK SIEGEL, CHRISTINA SIEGEL, TIM WHALEN, SARA STEWART, JIM CUNO 22) JENNI KAYNE AND GINA GERSHON 23) ANDREW DUNLAP, GEORGE FREEMAN, THOMAS JANE 24) BRETT ROBERTS, RAYMUNDO BALTAZAR, ANN PHILBIN, JONATHAN WEEDMAN 25) ANNELIESE SCHIERCH AND AARON BAY-SCHUCK 26) JORGE PARDO 27) BETYE SAAR AND MERRY NORRIS 28) PAUL MORRIS, BRENDA POTTER, JOHN MCILWEE 29) ERIKA GLAZER AND ALEXANDRA SHABTAI

LUNCHTIME ART TALKS

Lunchtime Art Talks take place every Wednesday at 12:30pm. The Hammer’s curatorial department leads free and insightful 15-minute talks about works of art currently on view or from museum collections. ***Speaker**
Please visit www.hammer.ucla.edu for a complete list of Lunchtime Art Talks.



November 30
Glenn Kaino
Untitled (Ricky Jay), 2010
*Allison Agsten



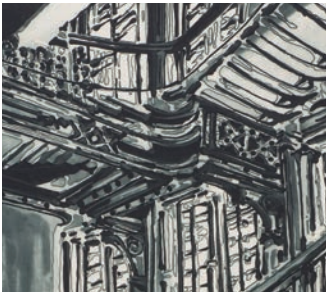
December 7
Carlos Bunga
Hammer Project, 2011
*Corrina Peipon



December 14
Sara VanDerBeek
Hammer Project, 2011
*Anne Ellegood



December 21
Maren Hassinger
River, 2011
*Elizabeth Cline



January 4
Kirsten Everberg
Kings Cross St. Pancras (King X), 2010
*Claudine Dixon



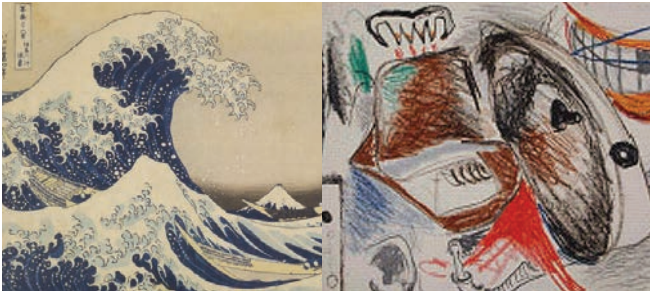
January 11
Kara Walker
no world, 2010
*Cindy Burlingham



January 18
After Pieter Bruegel the Elder
Sloth, 1558
*David Rodes



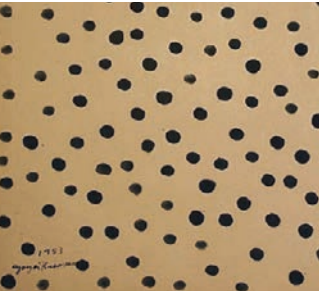
January 25
Patricia Esquivias
Of a short stay, 2010
*Emily Gonzalez



February 1
Katsushika Hokusai
Fuji behind the Waves off Kanagawa [The Great Wave], 1831–33
*Brooke Hodge



February 15
Mira Schendel
Untitled, ca. 1955–1965
*Emily Gonzalez



February 22
Yayoi Kusama
Accumulation, 1953
*Douglas Fogle

MUSEUM STORE

JUST FOR MEMBERS

DAVE MULLER DESIGNED iPhone 4 CASE-MATE

JOIN at the Contributor level or higher and receive a complimentary iPhone 4 Case-Mate* designed by artist Dave Muller exclusively for the Hammer Museum (a \$40 value!). PLUS enjoy a free exhibition catalogue of your choice, a great addition to any home library.

To receive this special offer, join online, by phone, or on-site using the coupon code: **special**. For more information on membership or to join today, call the Membership Department directly at 310-443-7050. **Offer valid while supplies last.*

BACKGROUND: DAVE MULLER DESIGNED iPhone 4 CASE-MATE DETAIL.

FEATURED ITEM

Designed by Cordula Kehrer and commissioned by fair trade NGO Preda, these wastebaskets made of rattan and plastic are produced by the indigenous Aeta people of the Philippines using traditional basket-weaving techniques. Made with sustainably harvested rattan.

Dimensions: 14 x 12 x 12 in.
Available for \$48 at the Hammer Store.

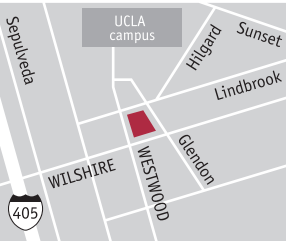
WWW.HAMMER.UCLA.EDU
310-443-7000

Hours
Tue, Wed, Fri, Sat 11am–7pm
Thu 11am–9pm
Sun 11am–5pm
Closed Mondays

Admission
\$10 Adults
\$5 Seniors (65+) and
UCLA Alumni Association
Members with ID

Free for Hammer members,
students with ID, UCLA
faculty and staff, active duty
military personnel, veterans,
and visitors 17 and under.

Free every Thursday for
all visitors.



Parking
Available under the museum;
\$3 with validation. Enter on
Westwood Boulevard or
Glendon Avenue. Parking for
people with disabilities is
provided on levels P1 and P3.
Bikes park free.

To request a group tour, visit our website or call the group tours line at 310-443-7041.

The Hammer Museum is operated and partially funded by the University of California, Los Angeles. Occidental Petroleum Corporation has partially endowed the Museum and constructed the Occidental Petroleum Cultural Center Building, which houses the Museum.

Board of Directors	Board of Overseers	Artist Council
Founder Dr. Armand Hammer	Peter Benedek Ruth Bloom	Edgar Arceneaux Lisa Anne Auerbach
Chairman Emeritus Michael A. Hammer	Lloyd E. Cotsen* Susie Crippen	Jennifer Bolande Andrea Bowers
Honorary Directors Armie Hammer Viktor Armand Hammer	Rosette Varda Delug George Freeman Bronya Galef Bob Gersh	Teddy Cruz Malik Gaines Glenn Kaino Yoshua Okón
Chairman John V. Tunney	Erika Glazer* David Hoberman Stanley Hollander Linda Janger	Laura Owens Hirsch Perlman Alexis Smith
Gene D. Block Marcy Carsey Lloyd E. Cotsen Samuel P. Dominick Frank O. Gehry Erika Glazer Richard W. Hallock Larry Marx Steven A. Olsen Anthony N. Pritzker Lee Ramer Nelson C. Rising Michael Rubel Heather Skinazi Kevin Wall John Walsh Christopher A. Waterman	Barbara Kruger Larry Marx* Dori Peterman Mostov Erik Murkoff Susan Bay Nimoy Lari Pittman Michael Rubel* Ronnie Sassoon Chara Schreyer Barry Smooke Susan Steinhauser David Teiger Dean Valentine Kevin Wall* Jeremy Zimmer	Director Ann Philbin

*Sits on Board of Directors